

OTTAWA BRANCH DITCH NO. 1155

Claibourne Twp.

1922

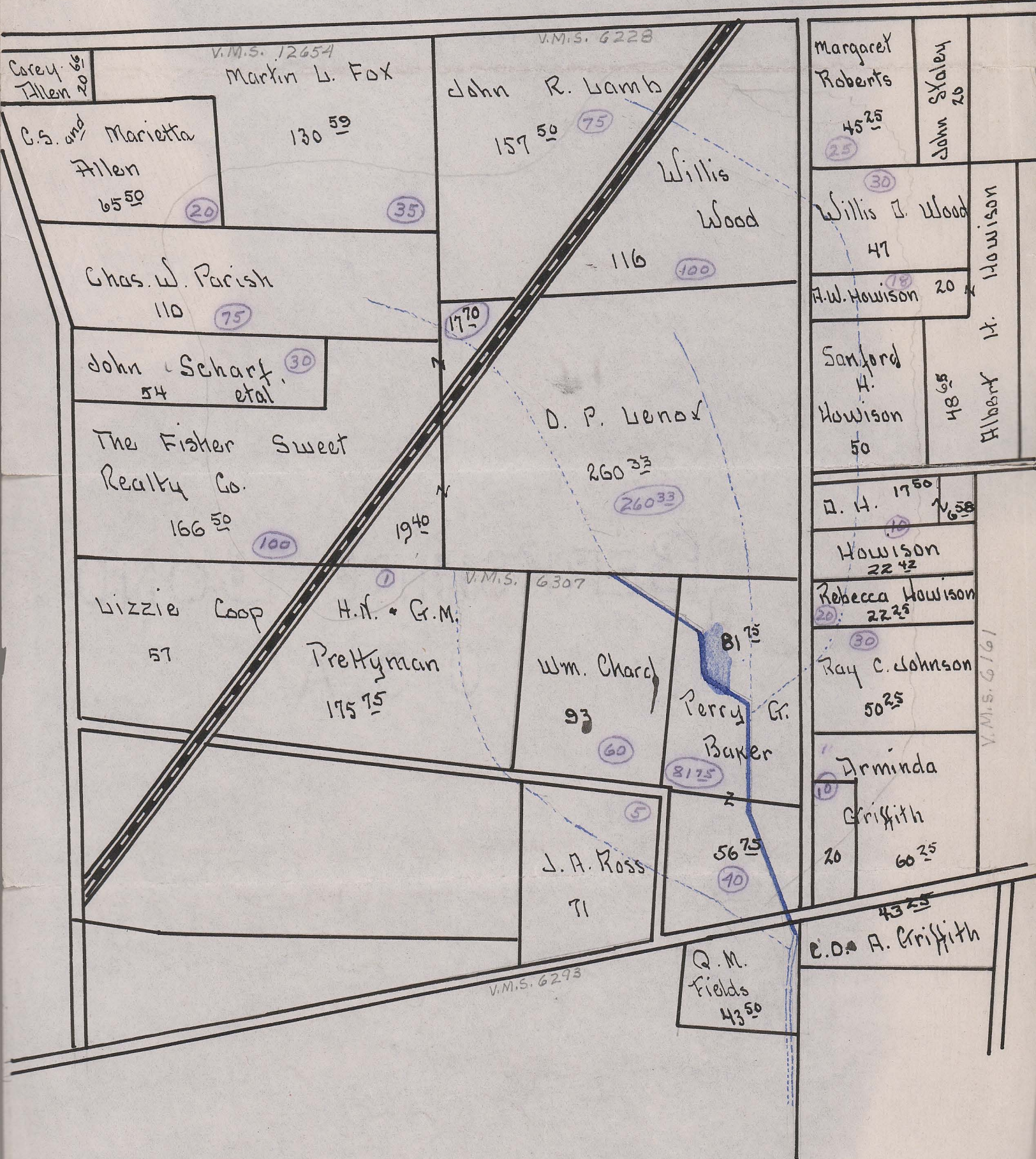
W.P. Beightler, County Engineer



Begins V.M.S. 6307
 Ends V.M.S. 6293 Ottawa Joint Ditch
 Total Acres Drained 1,043.78

OTTAWA BRANCH NO. 1155

- 1922 -



Begins V.M.S. 6307
 Ends V.M.S. 6293
 Acres Drained 1,043.78