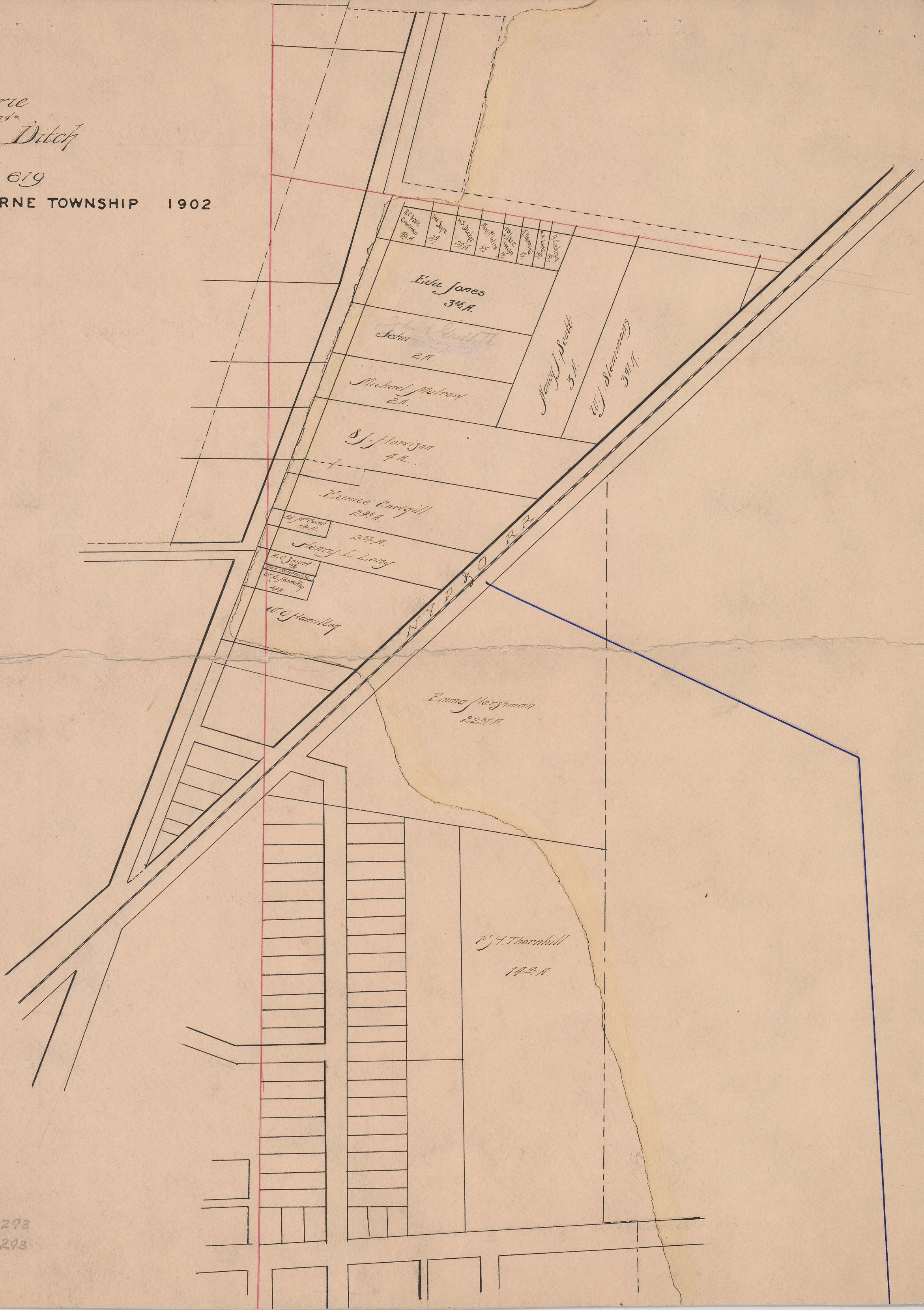


Eric
Ottawa Ditch

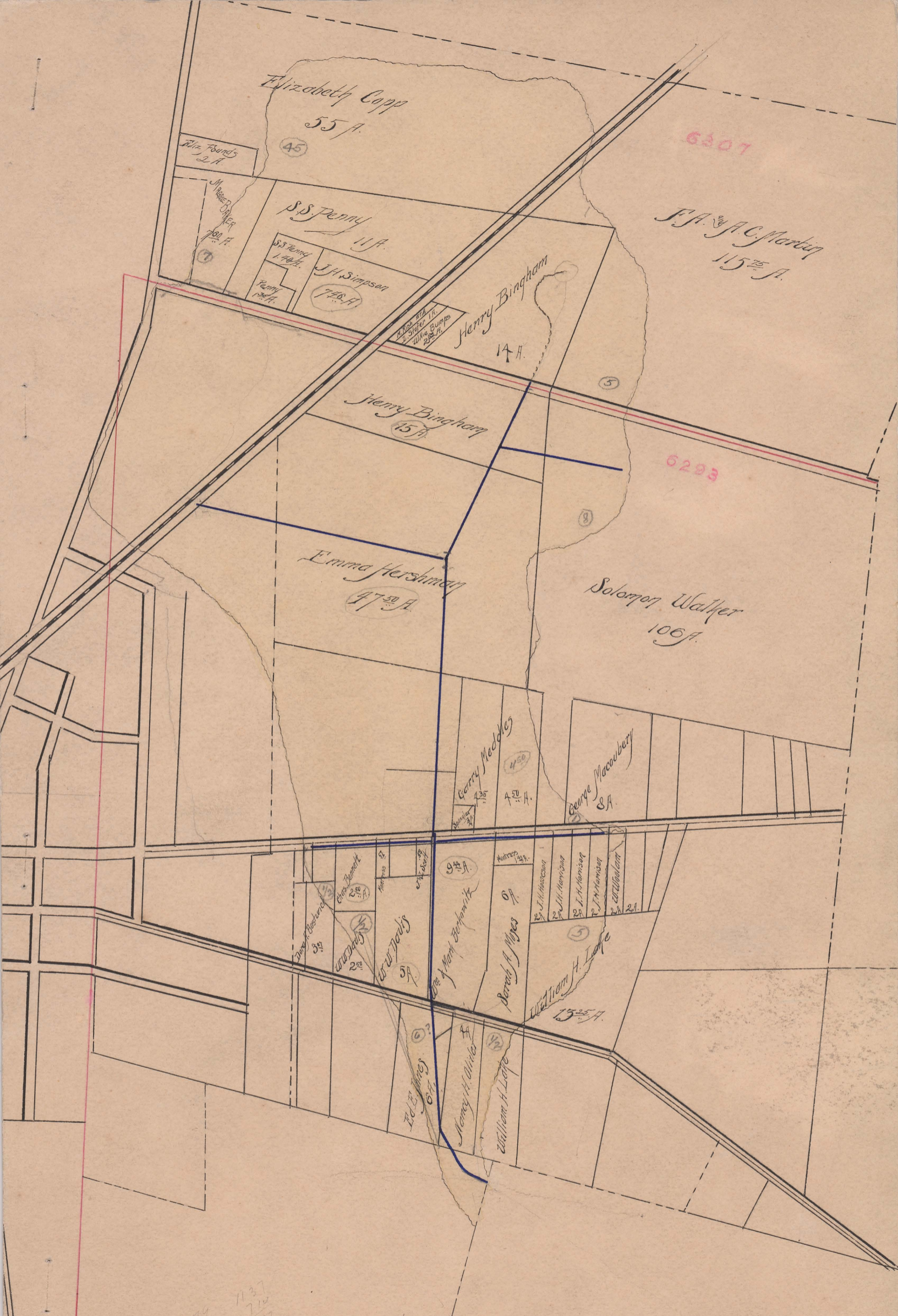
No. 619

CLAIBOURNE TOWNSHIP 1902



Begins V.M.S. 6293
Ends V.M.S. 6293

Box 291
FILED
LIGHT EDWARDS



6307

J.A. & A.C. Martin
115⁵⁰ A.

6293

Solomon Walker
106 A.

Henry Medley
4 A.

George Macomber
8 A.

9 A.

Sarah H. Myles
9 A.

William H. Lape
15⁵⁰ A.

Ed. E. Myles
6 A.

Nancy H. Lape

William H. Lape

1137
1979
1970
1909

Tile 12", 13¹/₂", 15"

CLAIBOURNE TOWNSHIP 1902

Erie and Ottawa Ditch

Begins V.M.S. 6292
Ends V.M.S. 6293 - Ottawa Ditch
Total Acres Drained 299⁵⁰ + Richwood State
Box 291

No. 619

Claibourne Township