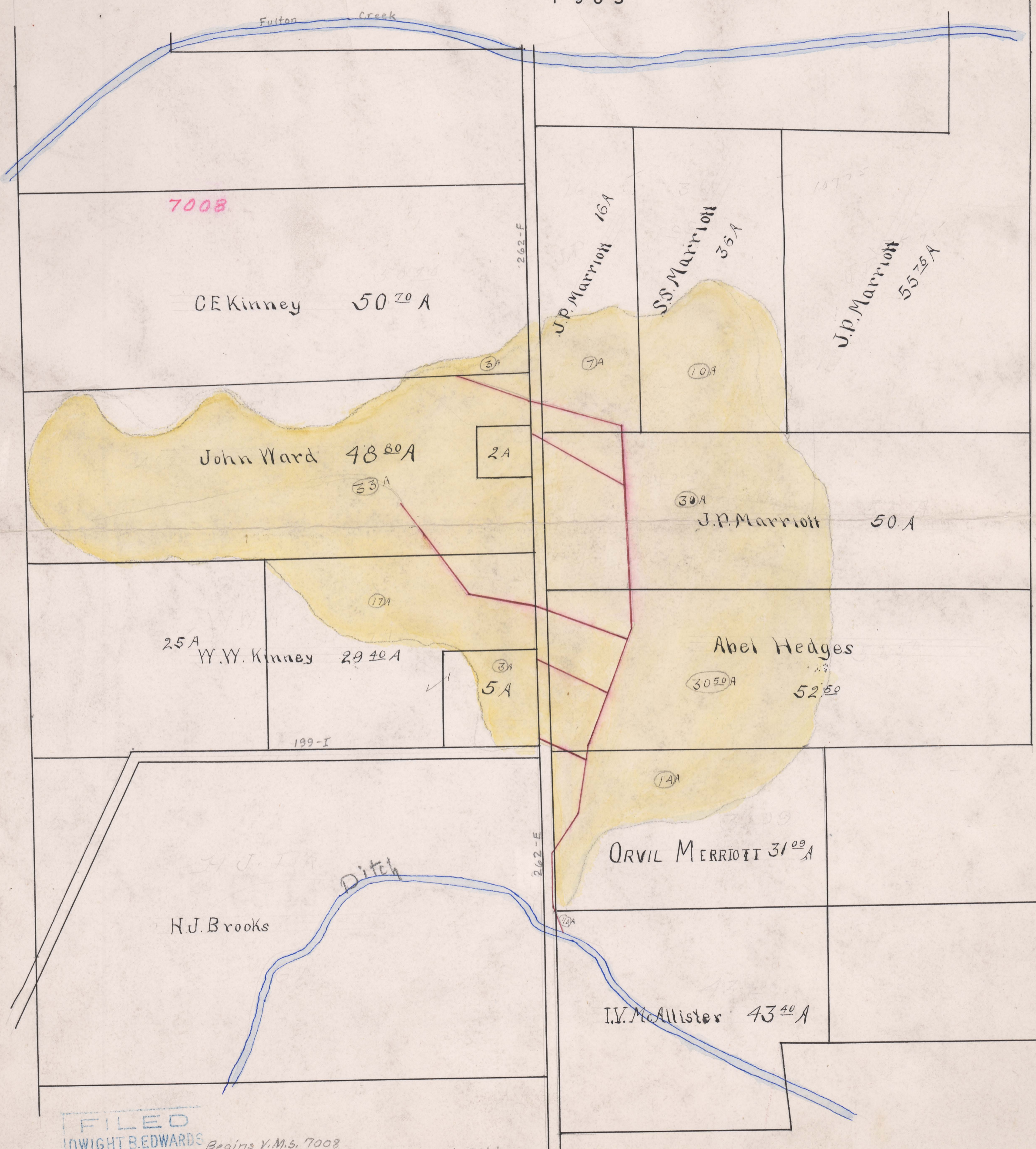


# Kinney Ditch No 734

CLAIBOURNE TOWNSHIP

1905



FILED  
DWIGHT B. EDWARDS  
JAN 8 1906  
COUNTY AUDITOR

Begins V.M.S. 7008  
Ends V.M. S. 7008 - Grassy Branch Ditch  
Total Acres Drained 14775  
Box 330