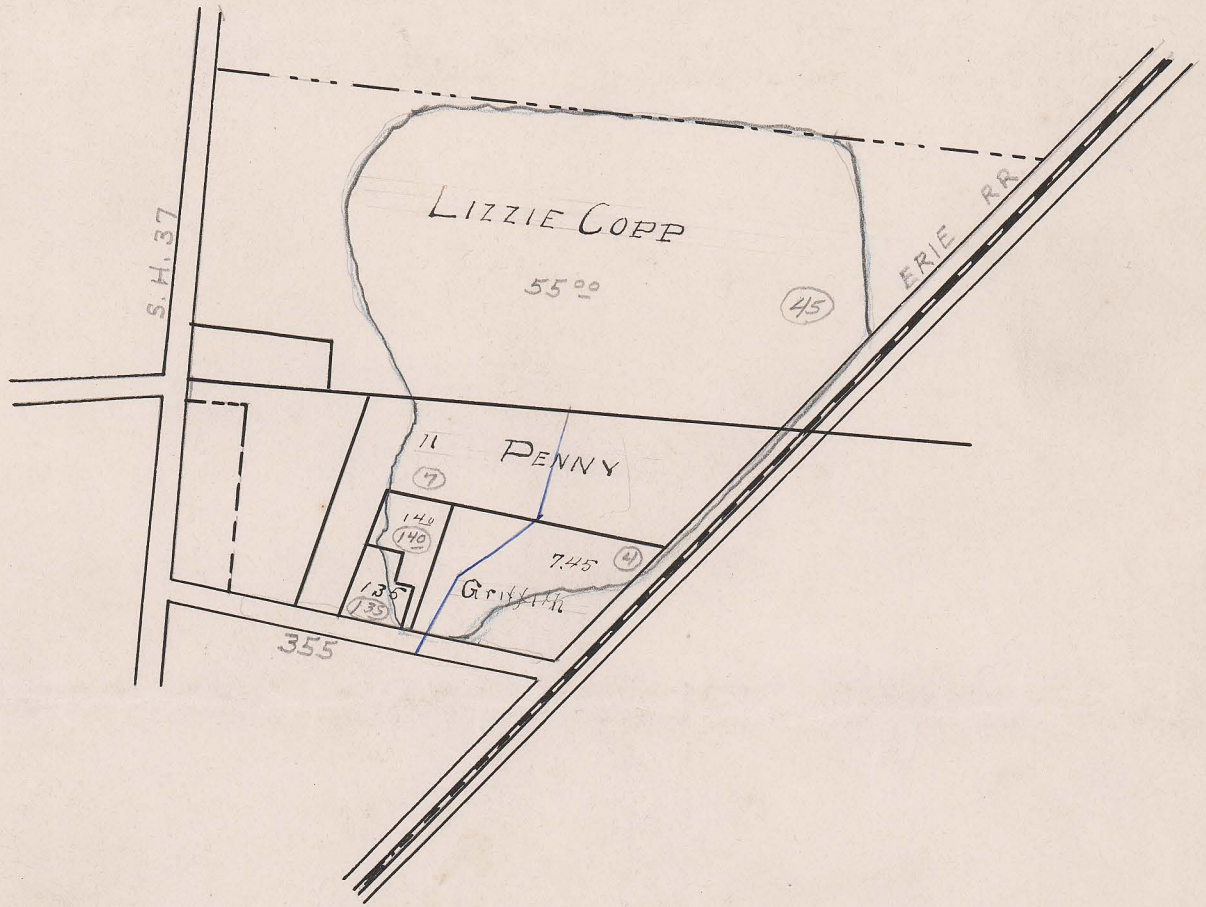


PENNY DITCH NO. 786

CLAIBOURNE TOWNSHIP 1906



FILED
DWIGHT B. EDWARDS
DEC
8
1906
COUNTY AUDITOR
UNION COUNTY O.

Begins V.M.S. 6307
Ends V.M.S. 6307 - Across Landon Road
Total Acres Drained 5875
Box 365