

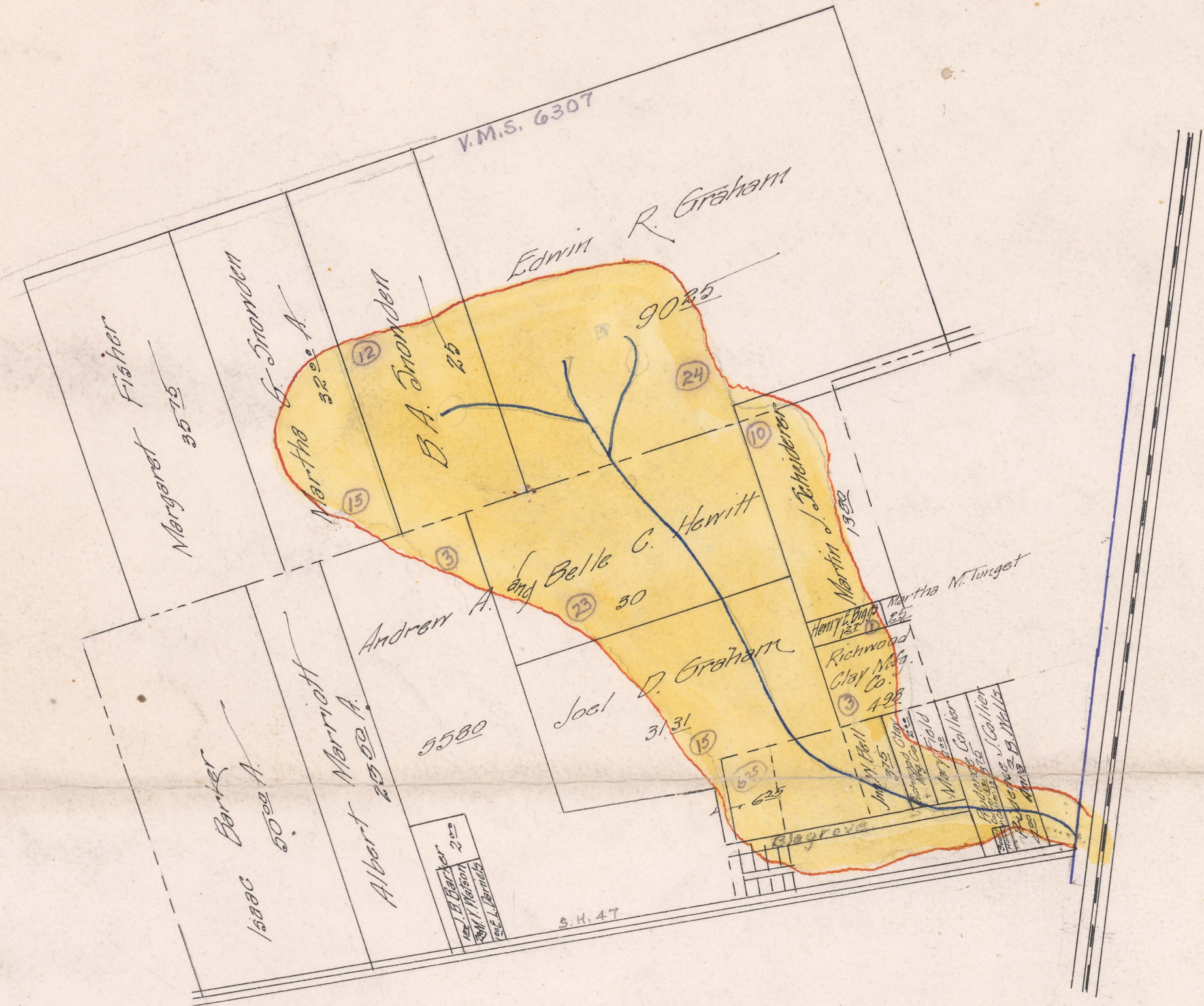
HEWITT DITCH

— No 955 —

CLAIBOURNE TP.

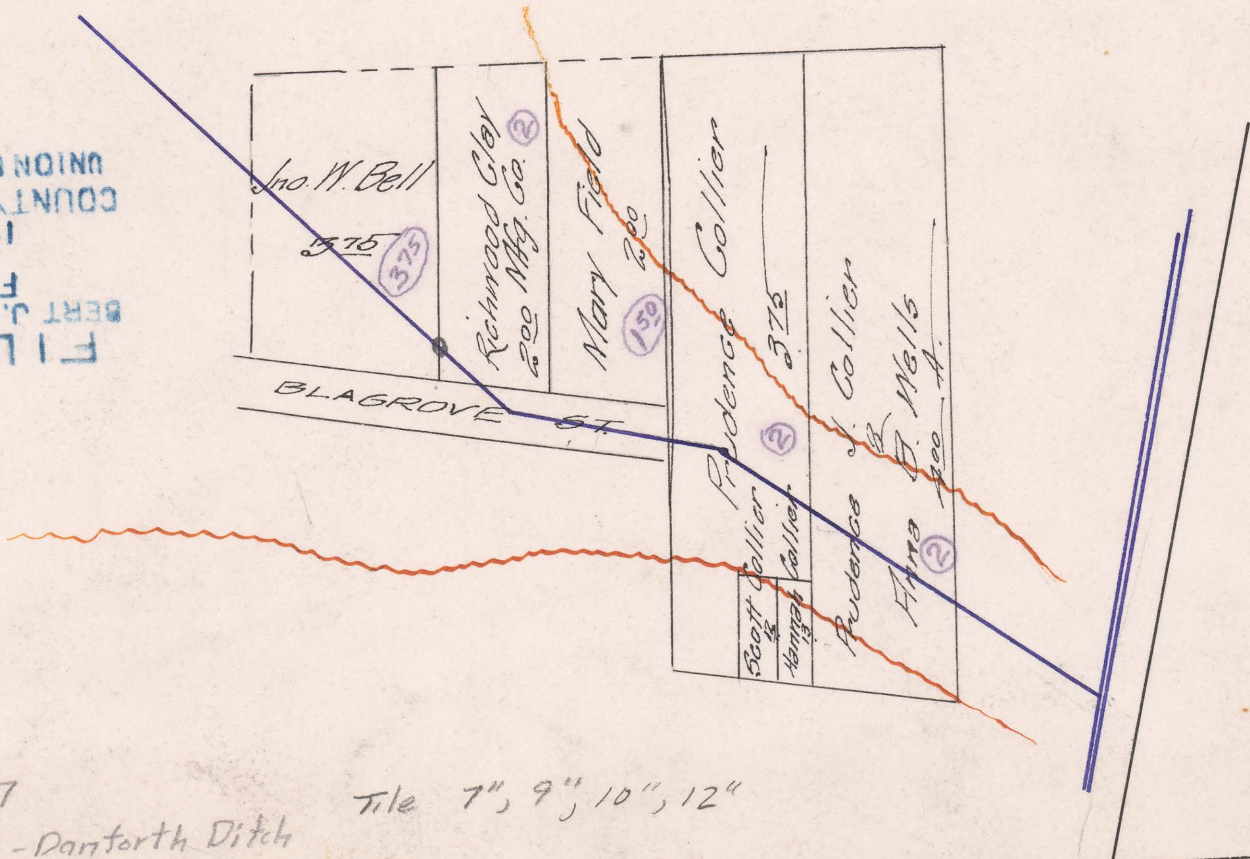
— 1910 —

FILED
BERT J. SHELTON
FILED
28
1911
COUNTY AUDITOR
UNION COUNTY, NC



780

Increased scale of Richwood Lands



Begins V.M.S. 6307
Ends V.M.S. 6307 - Danforth Ditch
Total Acres Drained 125 50
Box 405

Tile 7", 9", 10", 12"