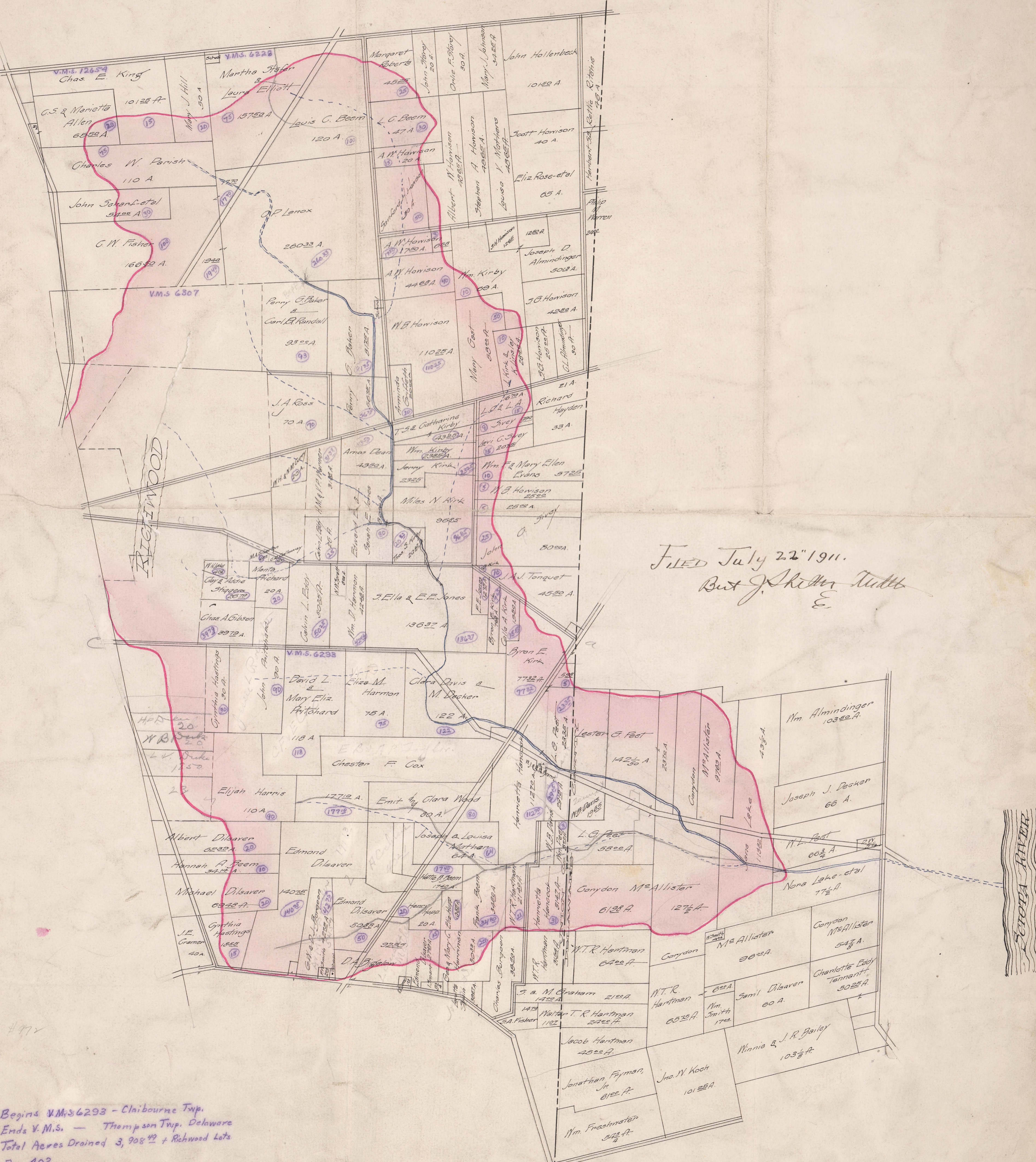


# OTTAWA JOINT DITCH # 972

— Located in —  
Claibourne Twp., Union County, and  
Thompson Twp., Delaware Co.

1911

ALVI GRAHAM, ENGR.



FILED July 22 1911.  
But J. Skelton Tuttle  
E.

Begins V.M.S. 6293 - Claibourne Twp.  
Ends V.M.S. — Thompson Twp., Delaware  
Total Acres Drained 3,908<sup>49</sup> + Richwood Lots  
Box 402