

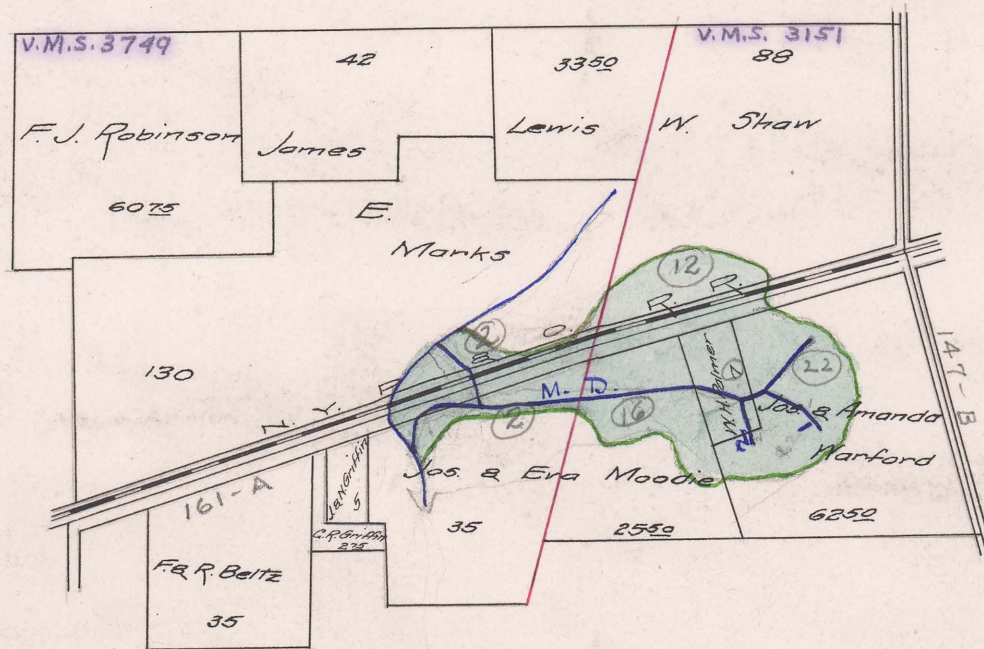
FILED
BERT J. SHELTON
NOV 27 1909
COUNTY AUDITOR
UNION COUNTY, O.

WARFORD DITCH

Allen Tp.

~ No. 920 ~

— 1909 —



Begins V.M.S. 3151

Ends V.M.S. 3749 - Spain Ditch

Total Acres Drained 6100

Box 401