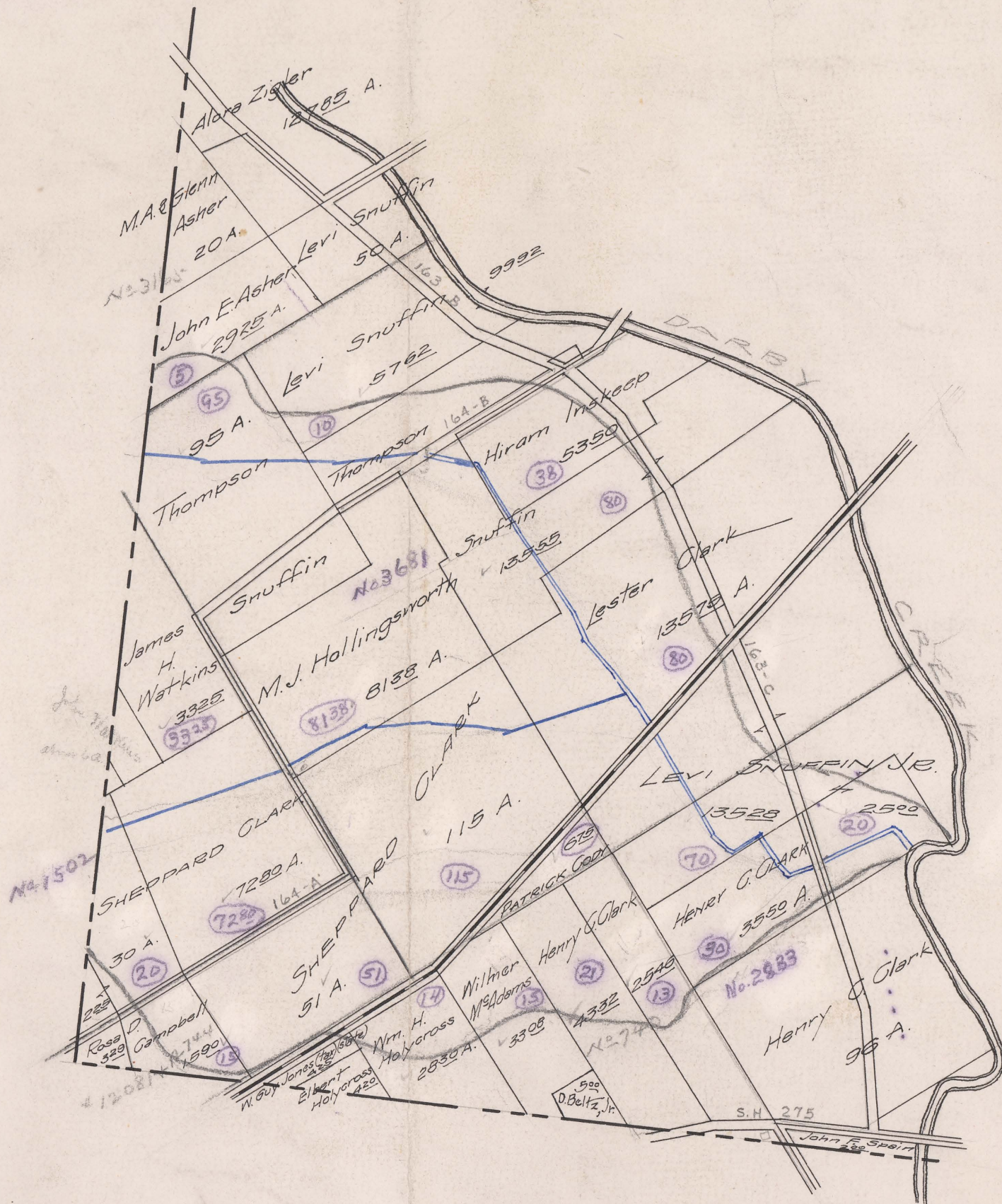


# SNUFFIN DITCH

NO. 990

LOCATED IN  
**ALLEN TOWNSHIP**  
**1911.**



Begins V.M.S. 3681  
 Ends V.M.S. 2833 - Darby Creek  
 Total Acres Drained 886<sup>18</sup>

Box 408

**FILED**  
**DEPT. J. SHELTON**  
 SEP 23 1911  
 COUNTY AUDITOR  
 UNION COUNTY, O.