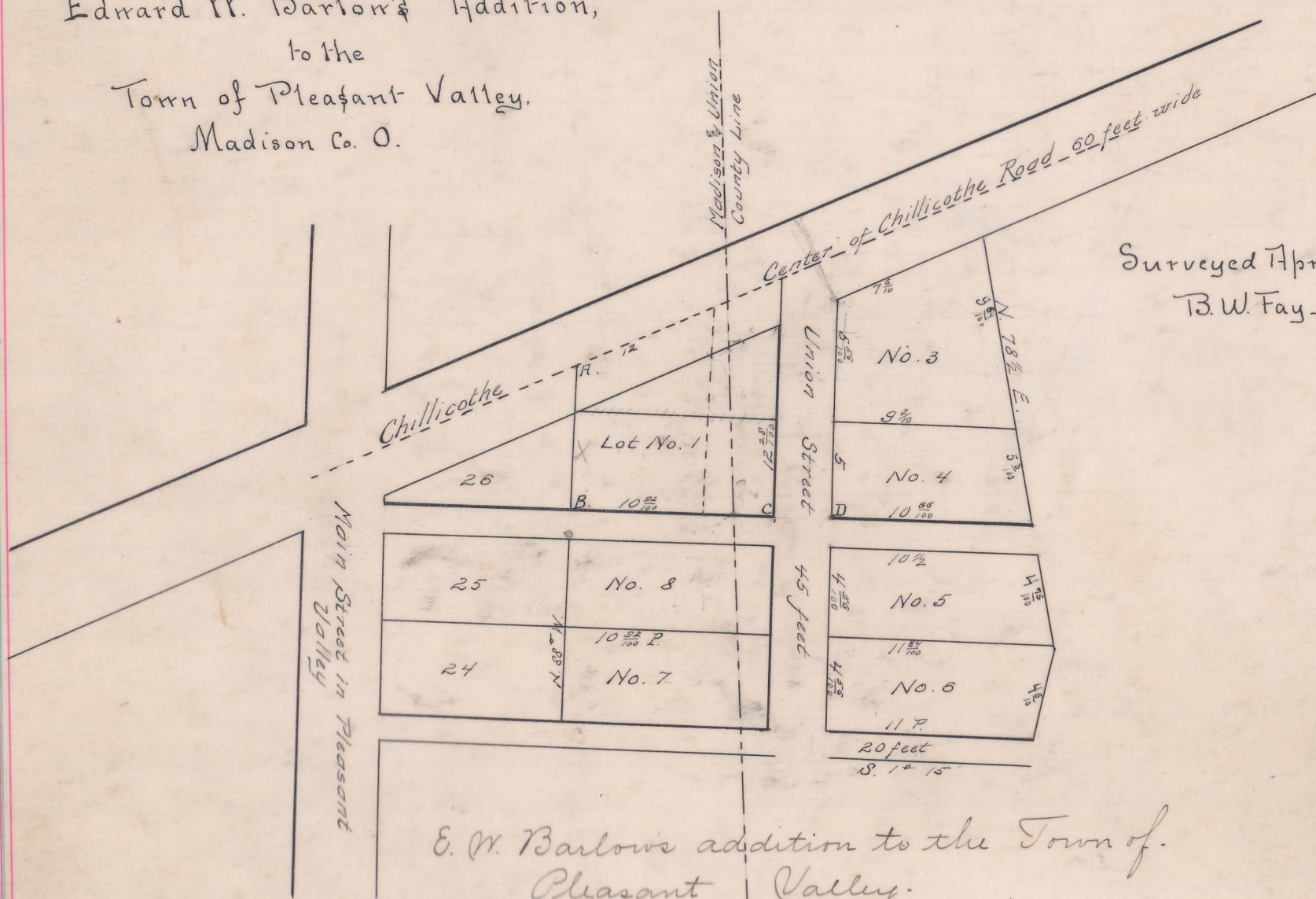


Surveyed Apr. 23. 1859  
B. W. Fay. Sur.



E. W. Barlow's addition to the Town of Pleasant Valley.

In Lots.	N <sup>os</sup>	1 & 2.	there are	108.33	square poles.
"	"	"	3	66.17	"
"	"	"	4	49.10	"
"	"	"	5	50.71	"
"	"	"	6	51.85	"
"	"	"	7	49.58	"
"	"	"	8	49.55	"
Streets and alleys.	"	"		<u>131.67</u>	"

Streets and alleys.

In Union County there are 575.00, equal 3 acres, 77 poles  
Say 2 acres, 45 poles. In Madison County, 1 acre 32 poles.  
Surveyed for E. W. Barlow. April 23<sup>rd</sup> 1859.  
A. B. Fay.

The above is correctly copied from Page 13. Vol. 1. Town Plats. in this office.  
March 27<sup>th</sup> 1860. George Brown. Recorder of Mad. Co. O.

It is hereby certified that the plat herewith connected is a correct representation of a Survey made on the 23<sup>d</sup> day of April 1859. for E. W. Barlow. It being his addition to the Town of Pleasant Valley. in Madison County. Stones are planted at the corners marked T. B. C. D.

The State of Ohio. Madison County. s.s.

Before me Asaph Allen a Justice of the Peace in and for said County personally appeared the within named Edmond W. Barlow and acknowledged the signing and sealing of the within addition to the Town Plat of Pleasant Valley a part of which is in Madison County and a part in Union County.

June the 22<sup>d</sup> 1859.

*Thaph allen. J. A.*

Rec'd for Record May 24<sup>th</sup> 1860. <sup>and</sup> Recorded May 28<sup>th</sup> 1860.  
John W. Thompson  
Recorder.