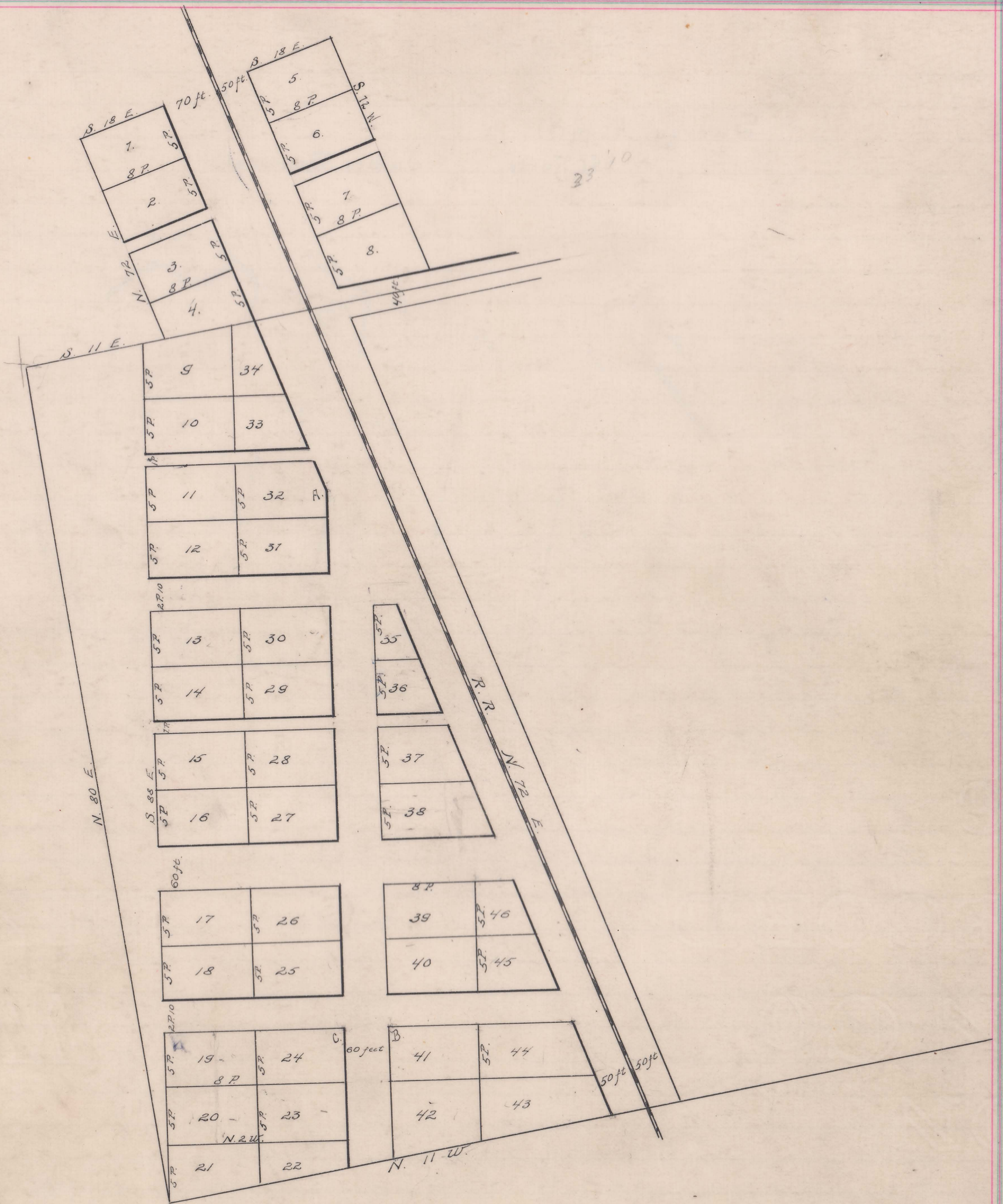


For vacation of alley see Deed Vol. 282 pg. 689 Alley between 36 & 37



For Resolution to Vacate Alley see Deed Volume 219 page 424  
 For Resolution vacating alley see Deed Volume 252 pg. 379  
 For Vacation of alley (School Street) Vol. 267 pg. 810



The adjoining plat is a correct representation of the Town of Dover, in Dover Township, Union County, Ohio, as laid out by me by request of William Richey, Adam Richey, Thomas Applin and B. F. Benton.

All east of the line from A. to B. and North of R.R. are on Bentons land. Those South <sup>west</sup> on Applins Land, all West of said line are on the land of William + Adam Richey.

The width of the streets and lots are marked on the same.

The courses of the lines are at right angles from the Delaware State Road. except those on the original land lines.

The courses marked on the different lines are the correct line courses.

I set stones as permanent corners at the corners of the lots marked A. B. C. and E. in presence of the owners.

Surveyed May 11<sup>th</sup> 1854

William B. Irwin  
Surveyor U. C. O.

Filed and recorded.

July 4<sup>th</sup> A. D. 1854

Wm M. Robinson  
Recorder U. C. O.