

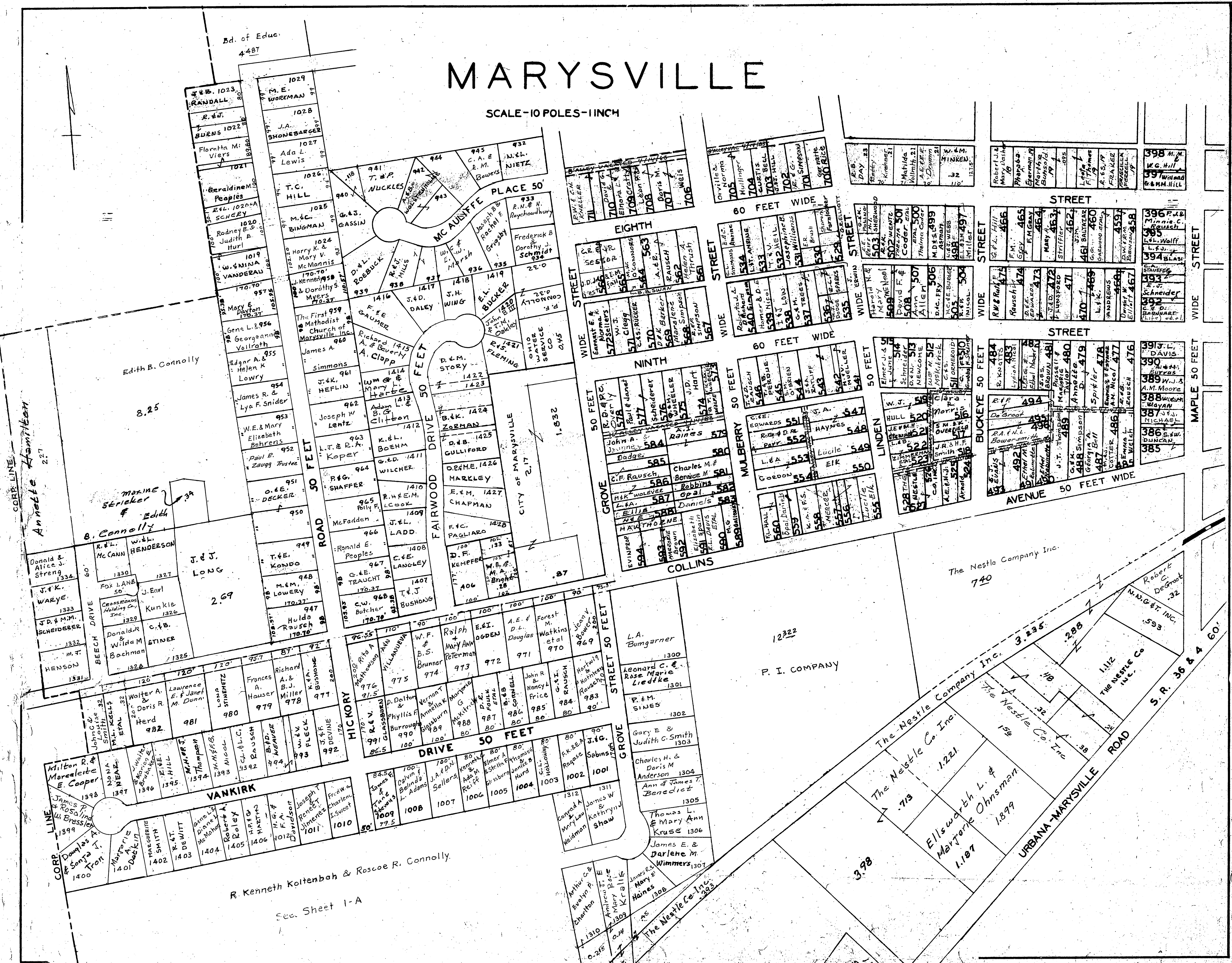


MARYSVILLE AND VICINITY
 Scale 1" = 500 feet
 Revised JAN. 1 1986



MARYSVILLE

SCALE-10 POLES-1 INCH



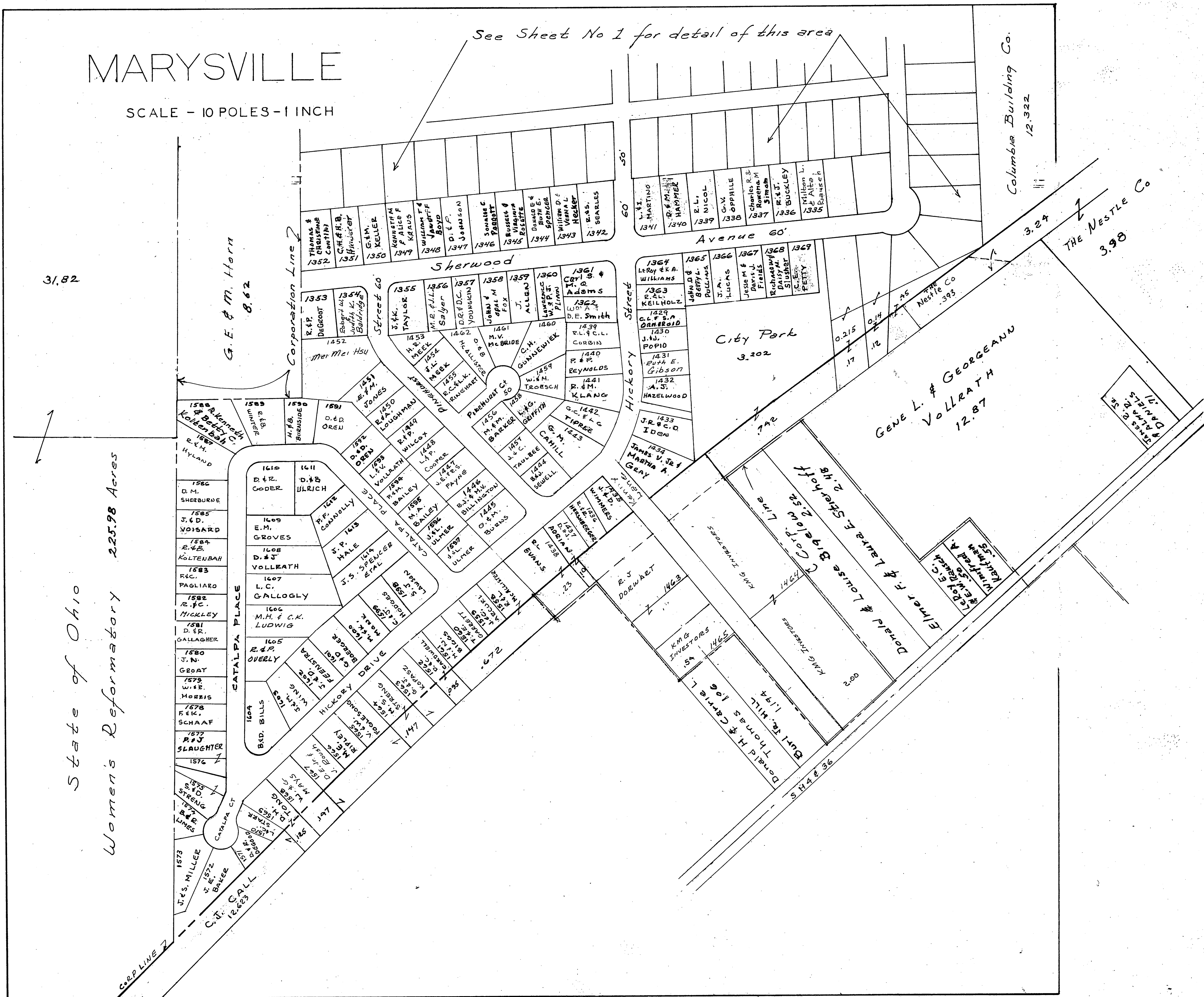
Corrected Jan. 1, 1936

Sheet 1

12-15-35

MARYSVILLE

SCALE - 10 POLES - 1 INCH



31.82

G. E. & M. Horn
8.62

State of Ohio
Women's Reformatory 225.28 Acres

See Sheet No 1 for detail of this area

Columbia Building Co.
12.322

The Nestle Co.
3.98

Gene L. & Georgeann
Vollrath
12.87

City Park
3.202

Donald & Louise Bigelow
2.52

Burt & Carrie L.
1.94

Donald H. & Carrie L.
1.94

Elmer F. & Laura E. Seckhoff
2.18

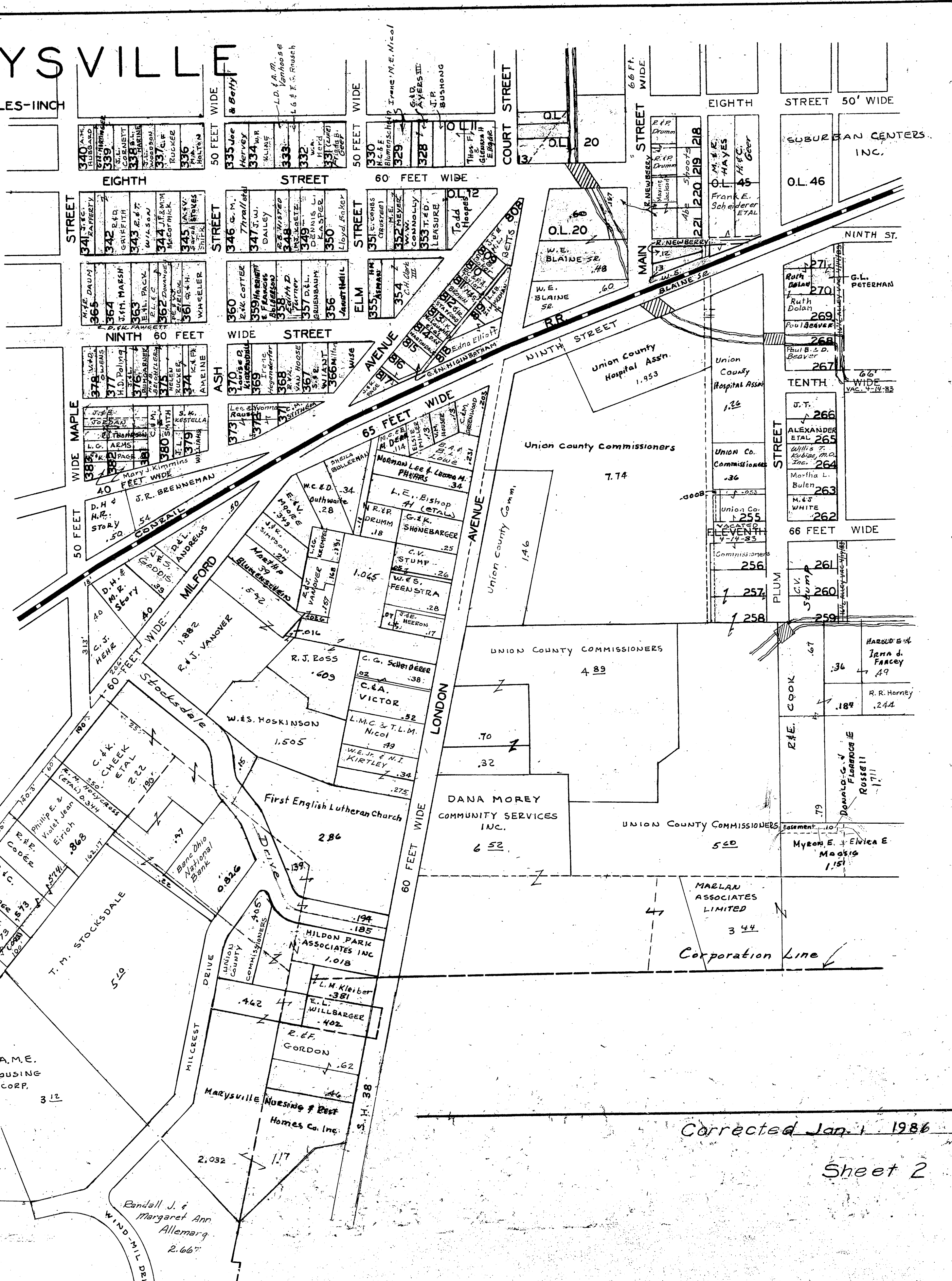
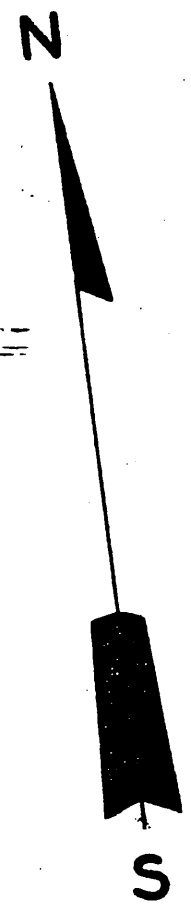
Emmet M.
1.35

Raymond
1.35

10.00

MARYSVILLE

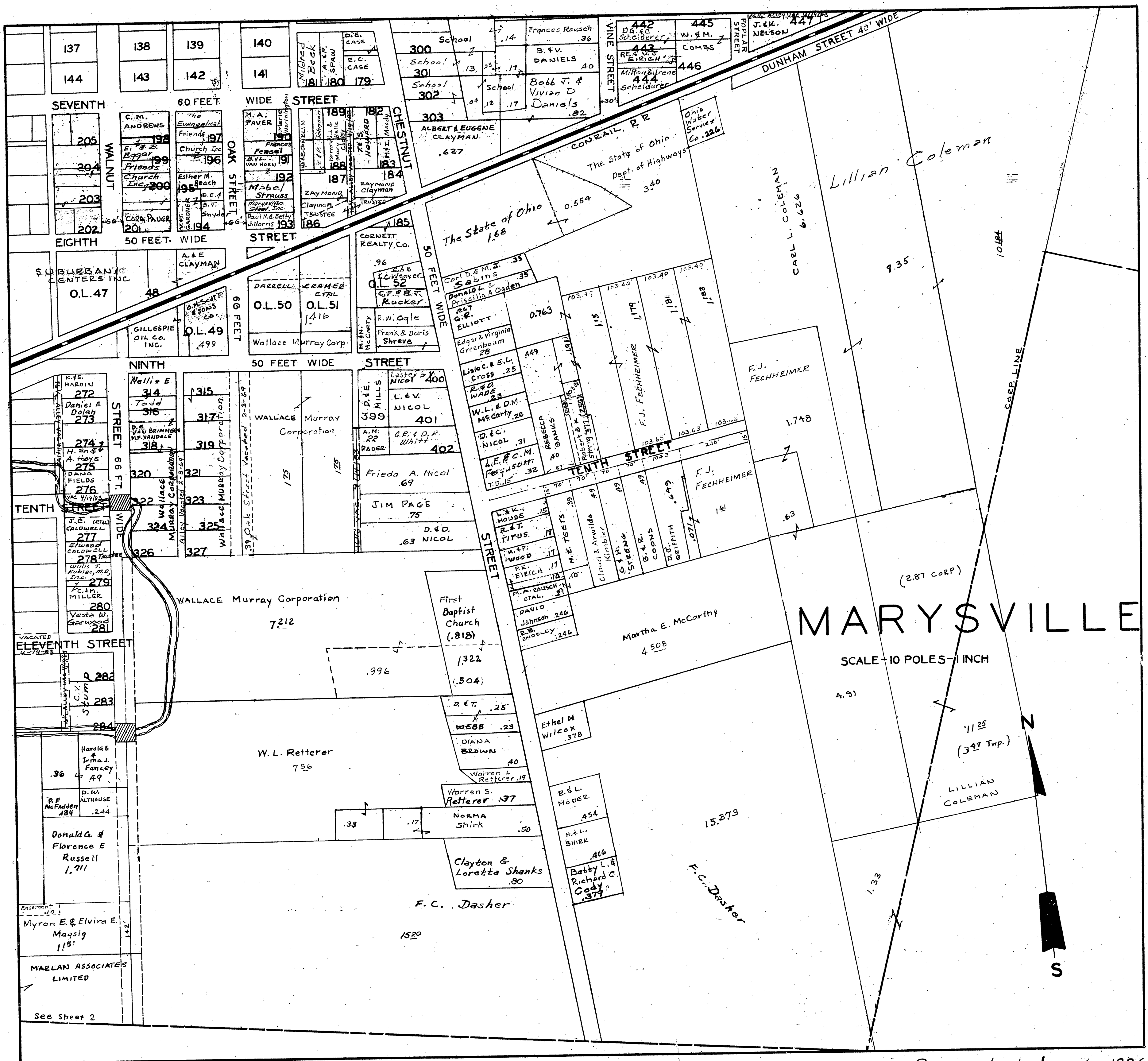
SCALE - 10 FEET = 1 INCH



Corrected Jan. 1, 1986

Sheet 2

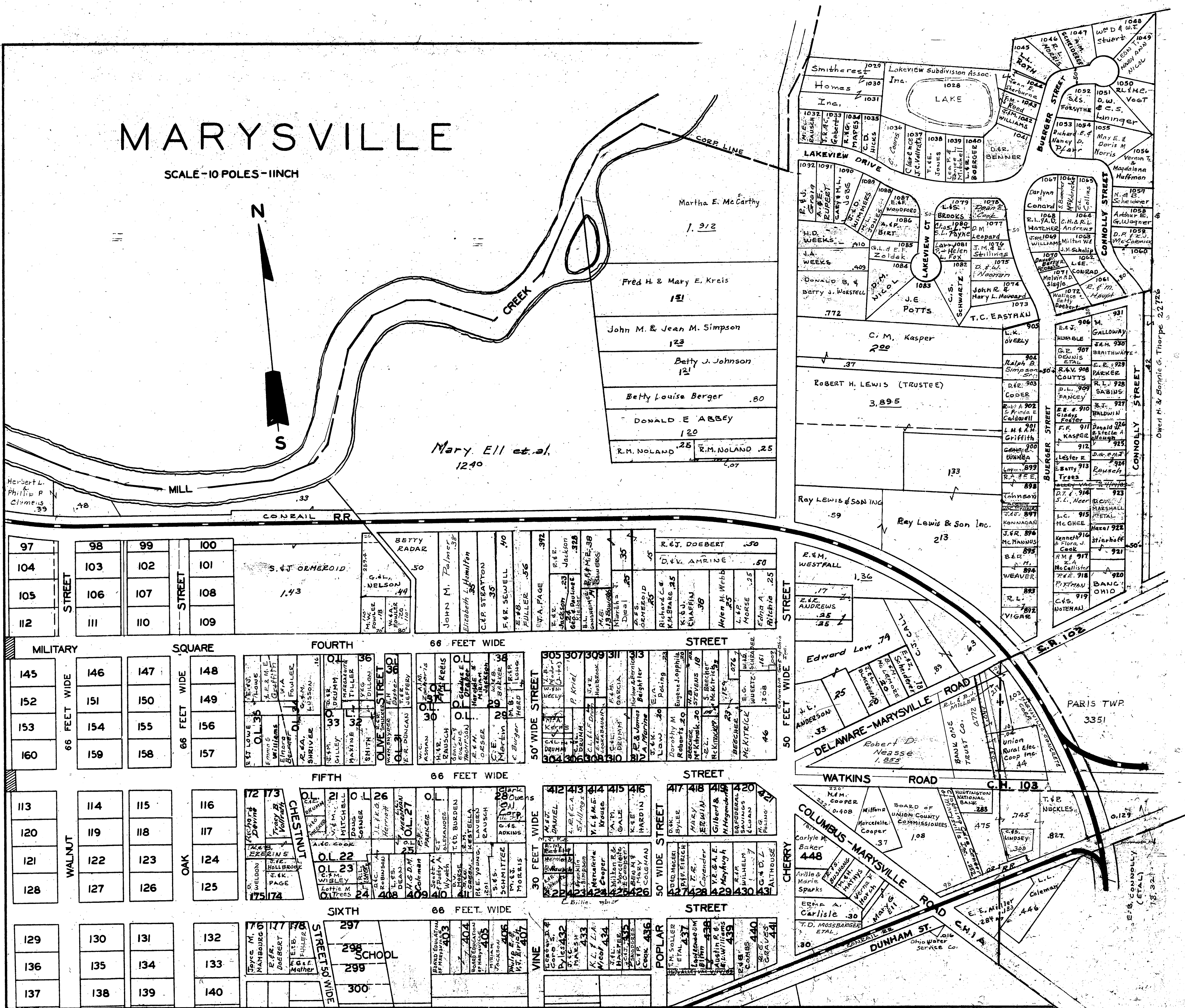
12-3-85



Corrected Jan. 1, 1936

MARYSVILLE

SCALE - 10 POLES - 1 INCH



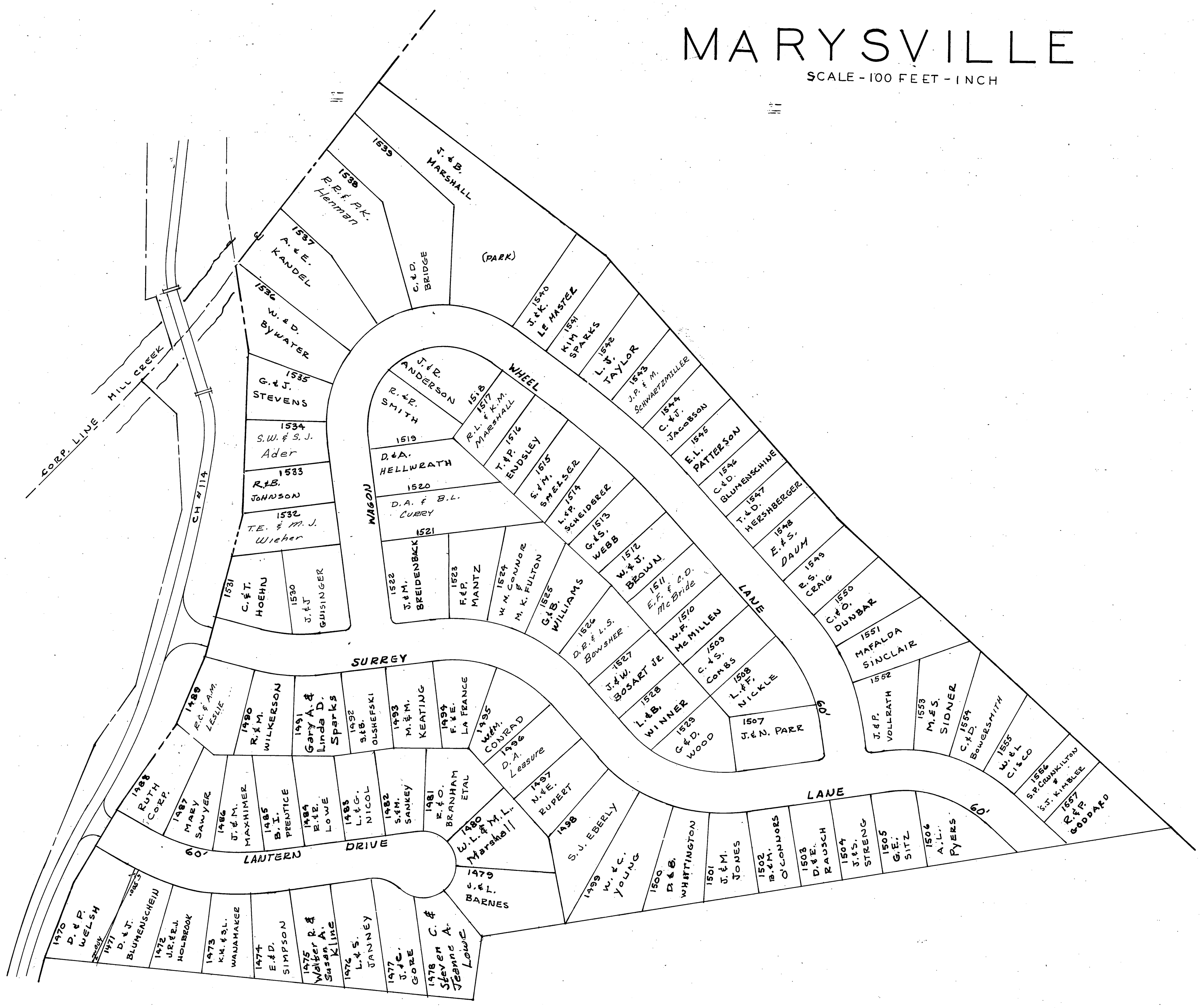
Corrected Jan. 1, 1956

Sheet 4

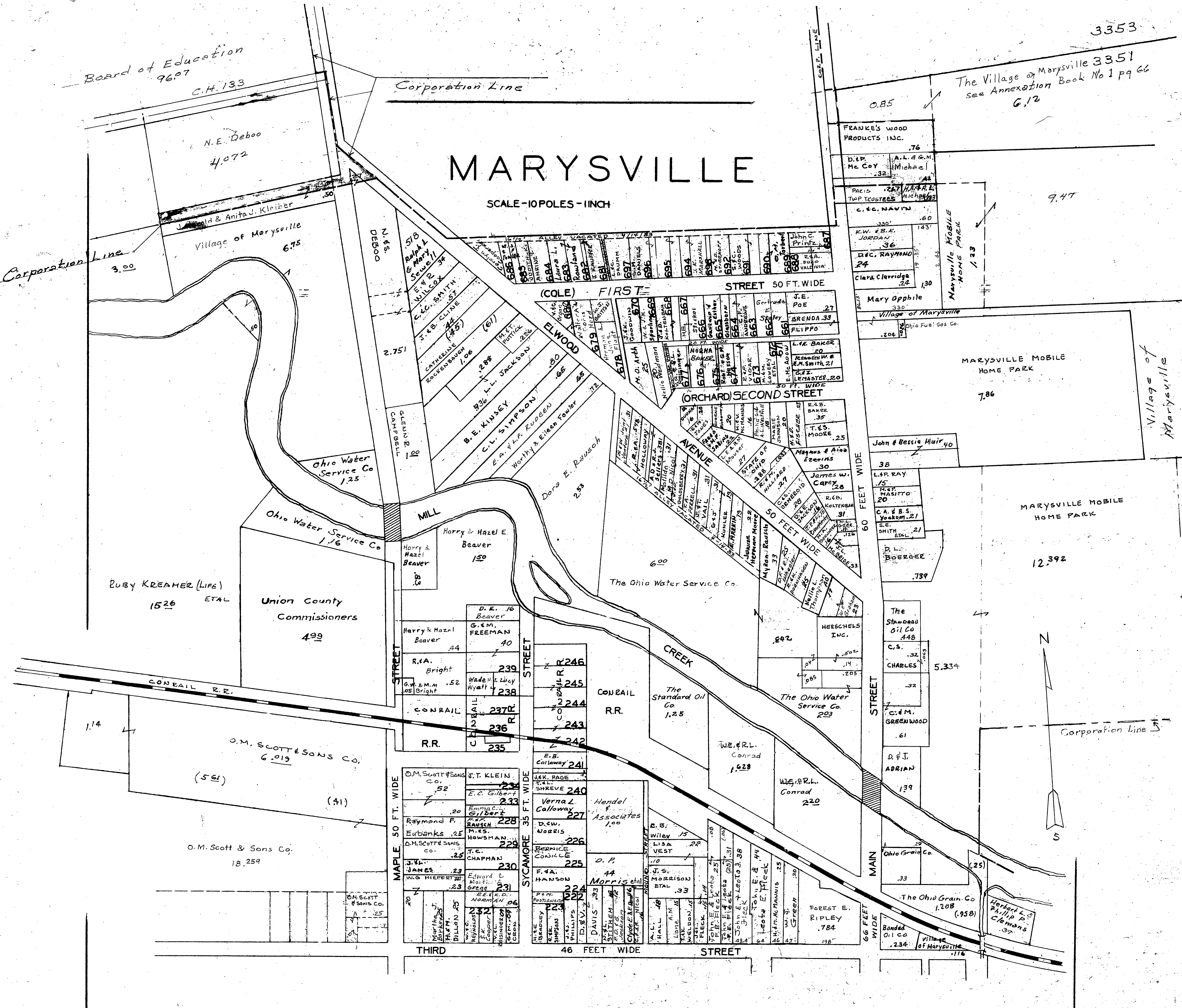
11-13-65

MARYSVILLE

SCALE - 100 FEET = 1 INCH

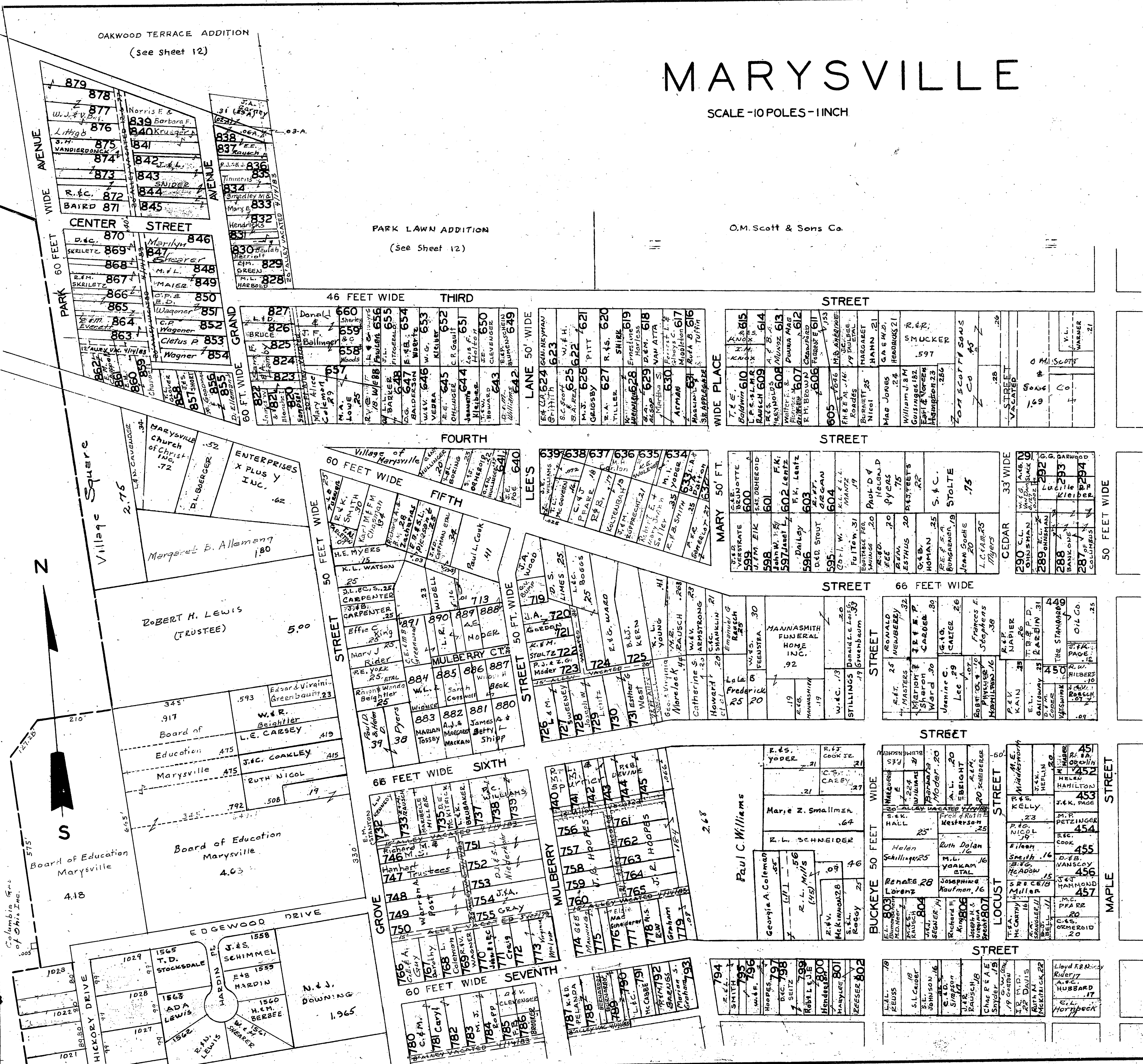


Corrected Jan 1 1986
Sheet 4 A



Corrected Jan 1 1986

Village of Marysville Swimming Pool



MARYSVILLE

SCALE - 10 POLES - 1 INCH

O.M. Scott & Sons Co.

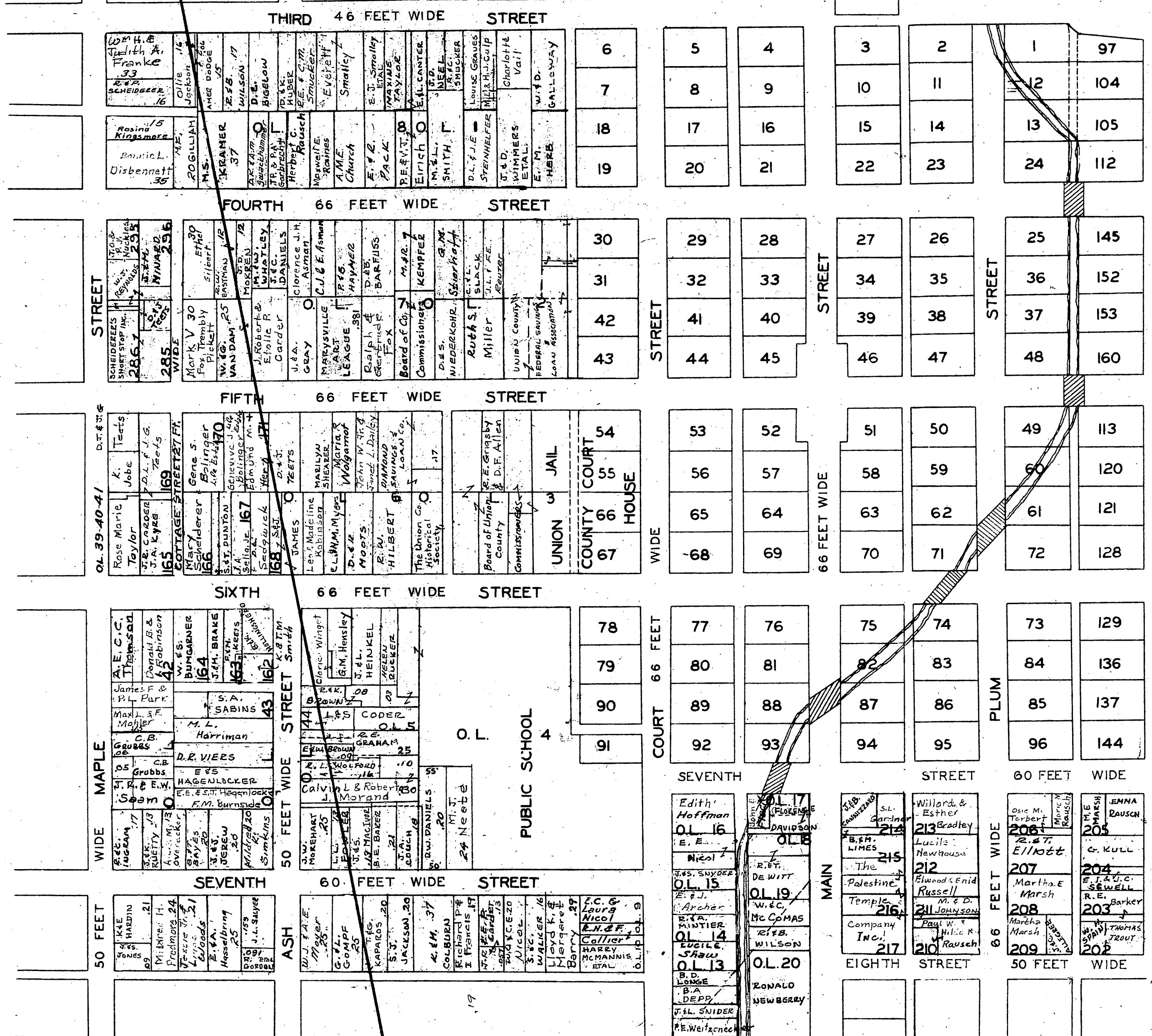
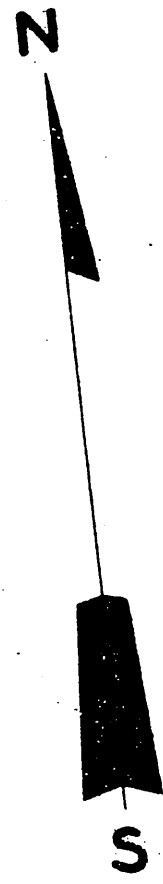
Corrected Jan. 1, 1926

Sheet 6

12-37-85

MARYSVILLE

SCALE - 10 POLES - 1 INCH



MARYSVILLE

ORIGINAL TOWN

SCALE - 5 POLES - 1 INCH

46 FT. WIDE

THIRD

STREET

LaVerne McKrick	J. & M. WILLIAMS
Loren E & Virginia M. Grimes	
C. M. LONGWORTH (ETAL)	
N. & M. MISCOVICH	
GARY E. PRICE	
Z.C. P.J. SCHNEIDER	B.S. PIKER
H.A.C. BAUSCH	19

STREET 66 FEET WIDE

H. W. EVAUS	J.L. TREUT	M. L. ROACH
J. & B. GARDNER		
C. & S. ORMEROD		
Bernhard C. & Phyllis F. Schneider		
MARYSVILLE NEWSPAPER, INC.		
Jeanie Goehs	Bernice M. Derr	J. D. JOBE
20		

Forest E. Ripley	4
Forest E. Ripley	9
S.D. Williams	16
Marysville Newspaper, Inc.	18
Ohio Corporation	21

66 FEET

WIDE

FOURTH

M.W. KLIEBER	30
G.S. STRAUSS	31
The First Presbyterian Church	42
Presbyterian Church	43

COURT

G. & B. TOSSEY	29
Glad Tidings Tabernacle	32
C. & H. TROESCH	33
NALCOLM & BARBARA MACIVOR	34
John W. & Alma Scott	41
Office of Federal Savings & Loan	44

Eugene P. Huber	28
CATHERINE ROCKENBAUGH	35
Oletus P. & Edna W. Wagner	36
R. F. JONES	37
Hayes & Gray Inc.	38
William C. & Otto	39
Adelbert F. Braun	40
LUTHER LIGGETT TRUSTEE	45
Todd Hoopes	46

66 FEET

WIDE

FIFTH

--	--

--	--

--	--

PUBLIC
SQUARE

STREET 66 FEET WIDE

Mc Auliffe Bros. Inc.	3
Mc Auliffe Bros. Inc.	10
United States America	15
22	23

STREET

Lawrence S. & Ruth M. Reish	27
MARYSVILLE PROFESSIONALS	28
Harold & M.C. Hildreth	29
J. & K. PAGE	34
L. D. KEMPER CENTEL CABLE TELEVISION CO.	35
J. & P. SPAIN	36
William C. Asman	37
Terry Brown	38
William C. Otto	39
Marysville Industrial Development Corp.	46

MAIN

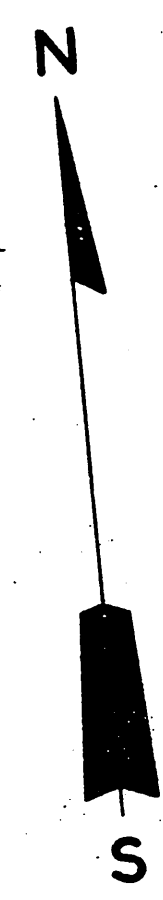
PLUM

STREET 66 FEET WIDE

LANDMARK INC.	12
13	14
24	25

Leola F. Thomas	25
Leola F. Thomas	36
Banc Ohio National Bank	37
48	37

CONRAIL R.R.



Corrected Jan. 1, 1986

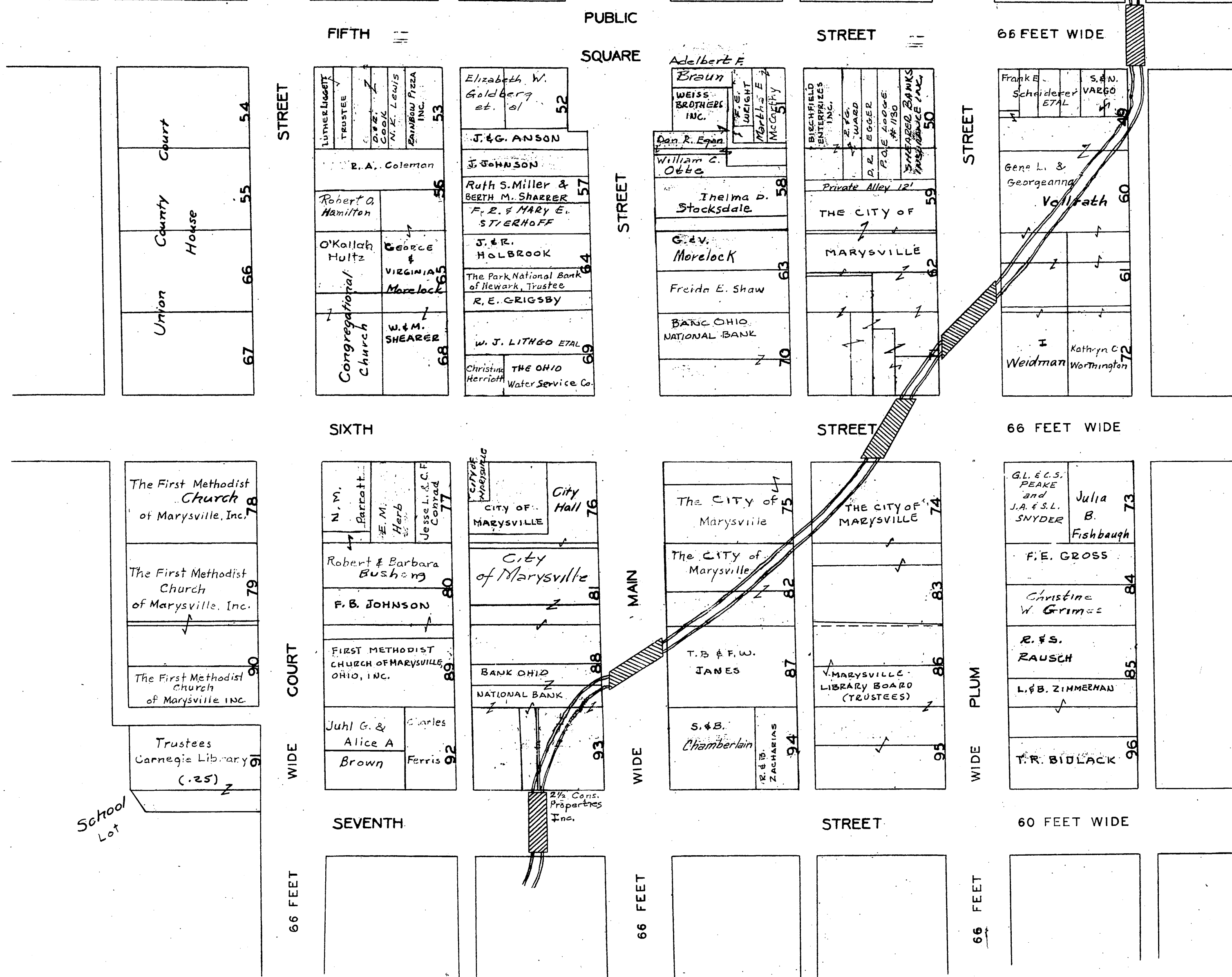
Sheet 8

12-23-85

MARYSVILLE

ORIGINAL TOWN

SCALE-5 POLES-1 INCH



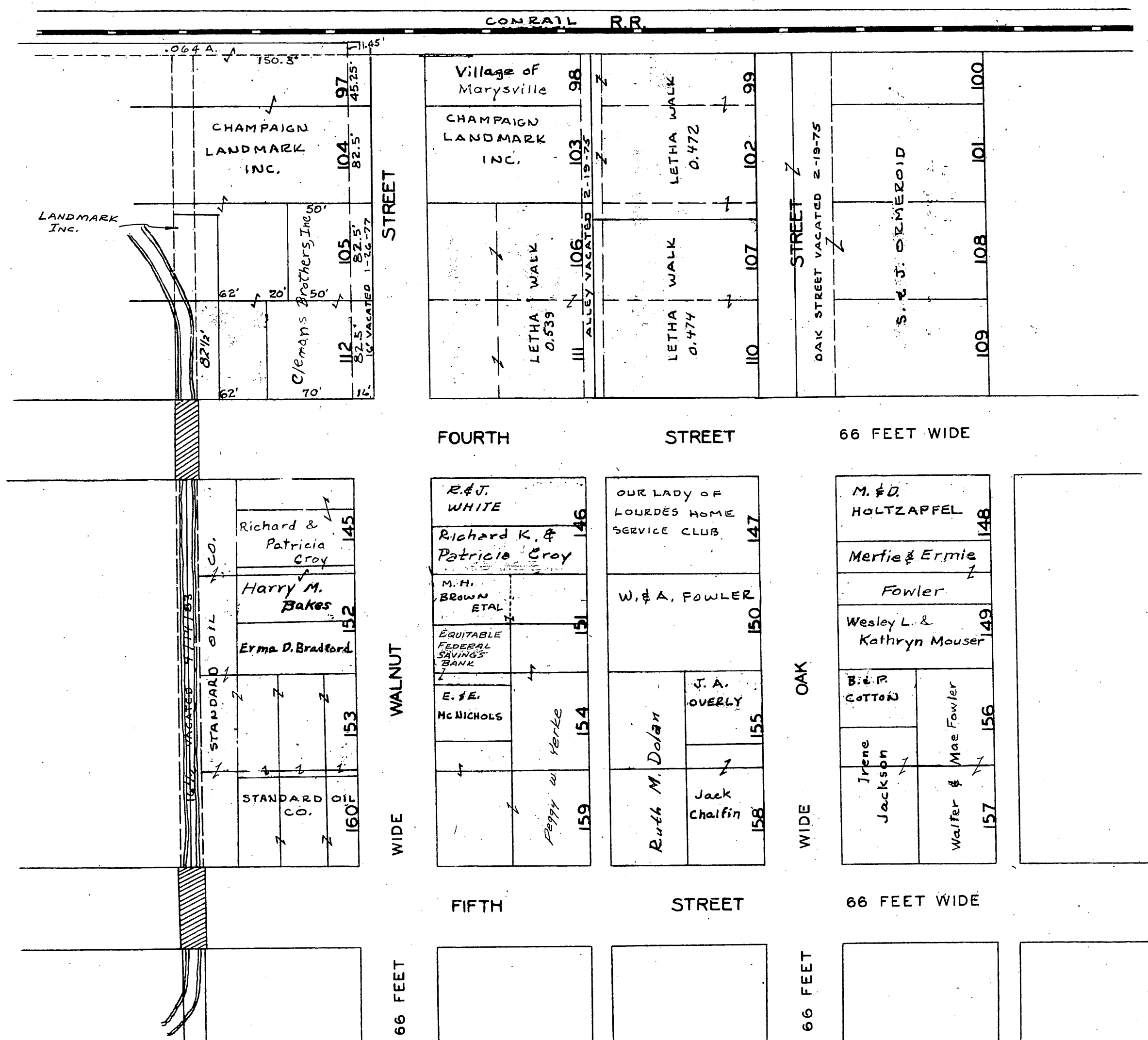
Corrected Jan. 1, 1986

Sheet 9

10-16-65

MARYSVILLE

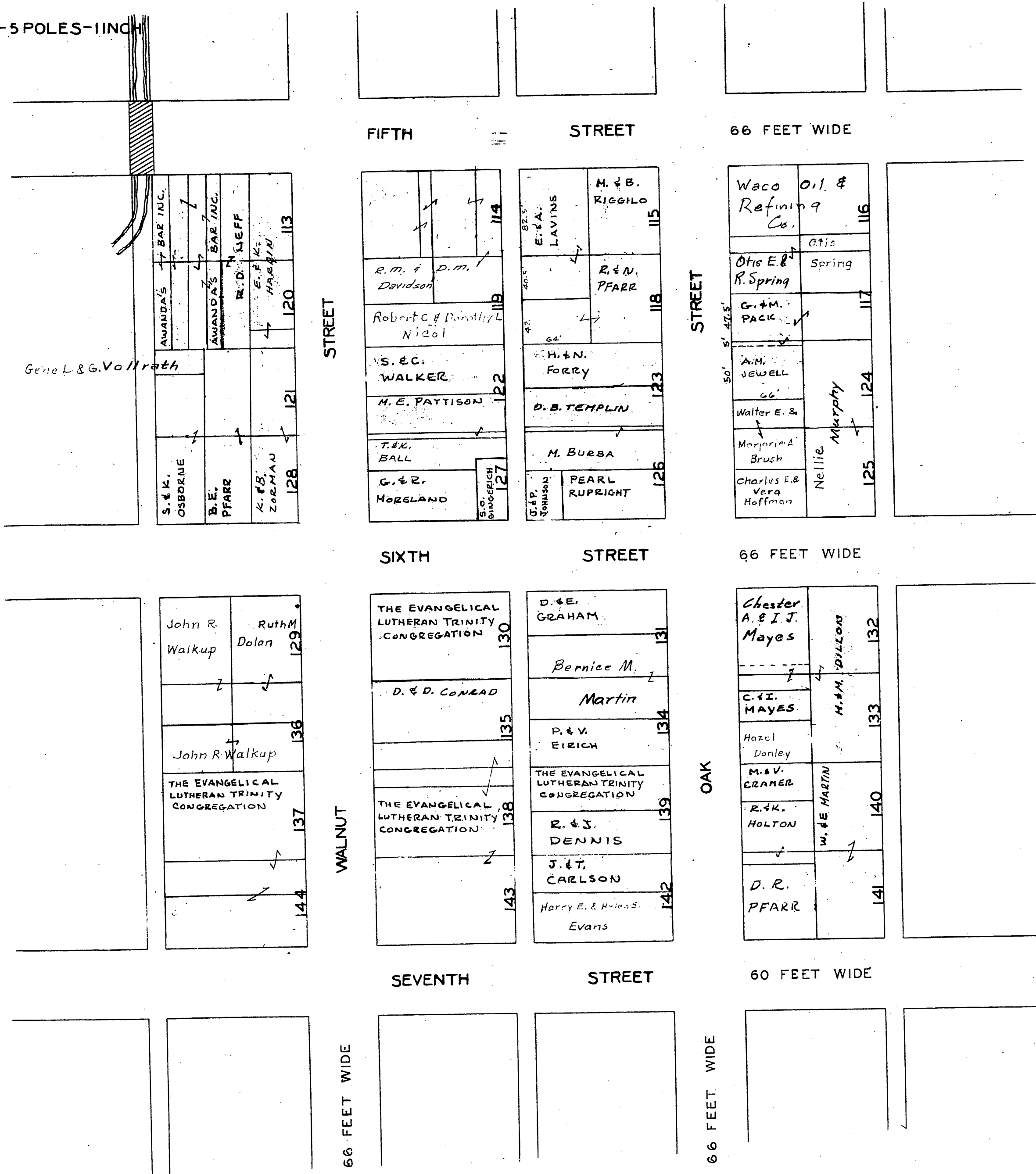
SCALE-5 POLES=1 INCH



Corrected Jan. 1 1986
Sheet 10

MARYSVILLE

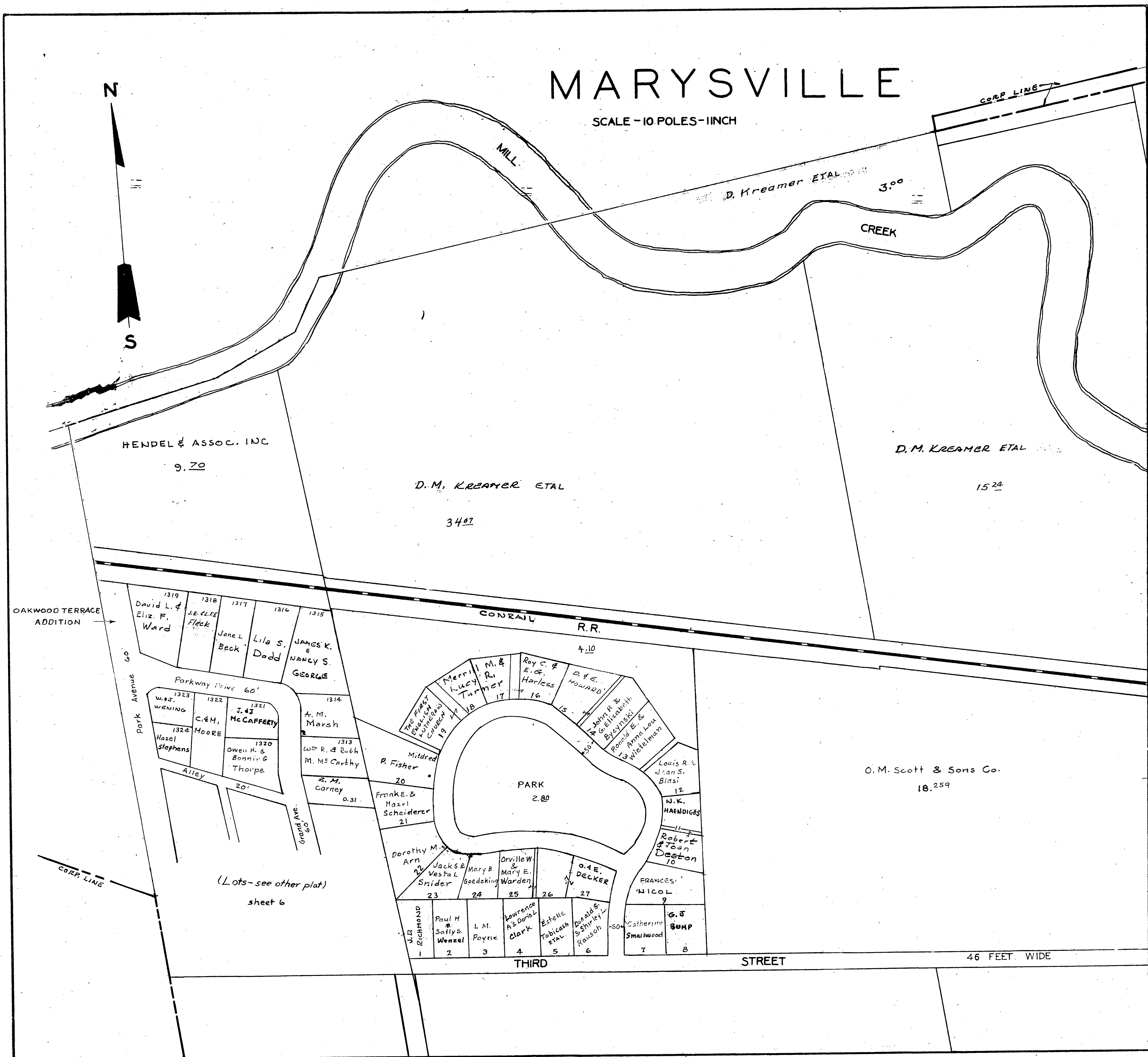
SCALE-5 POLES=1 INCH



Corrected Jan. 1 1986

Sheet 11

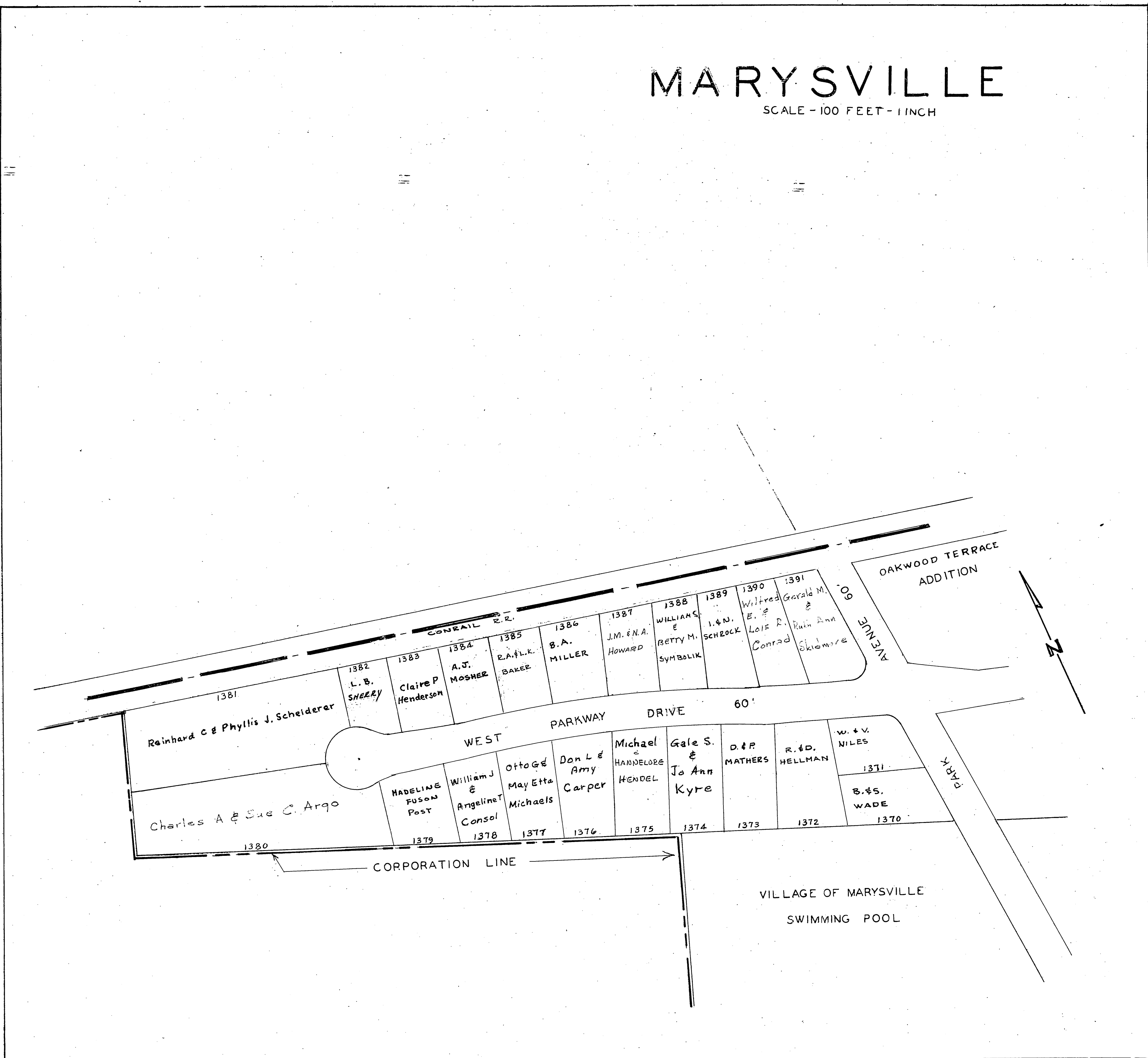
2-9-85



Corrected Jan. 1, 1986
Sheet 12

MARYSVILLE

SCALE - 100 FEET = 1 INCH

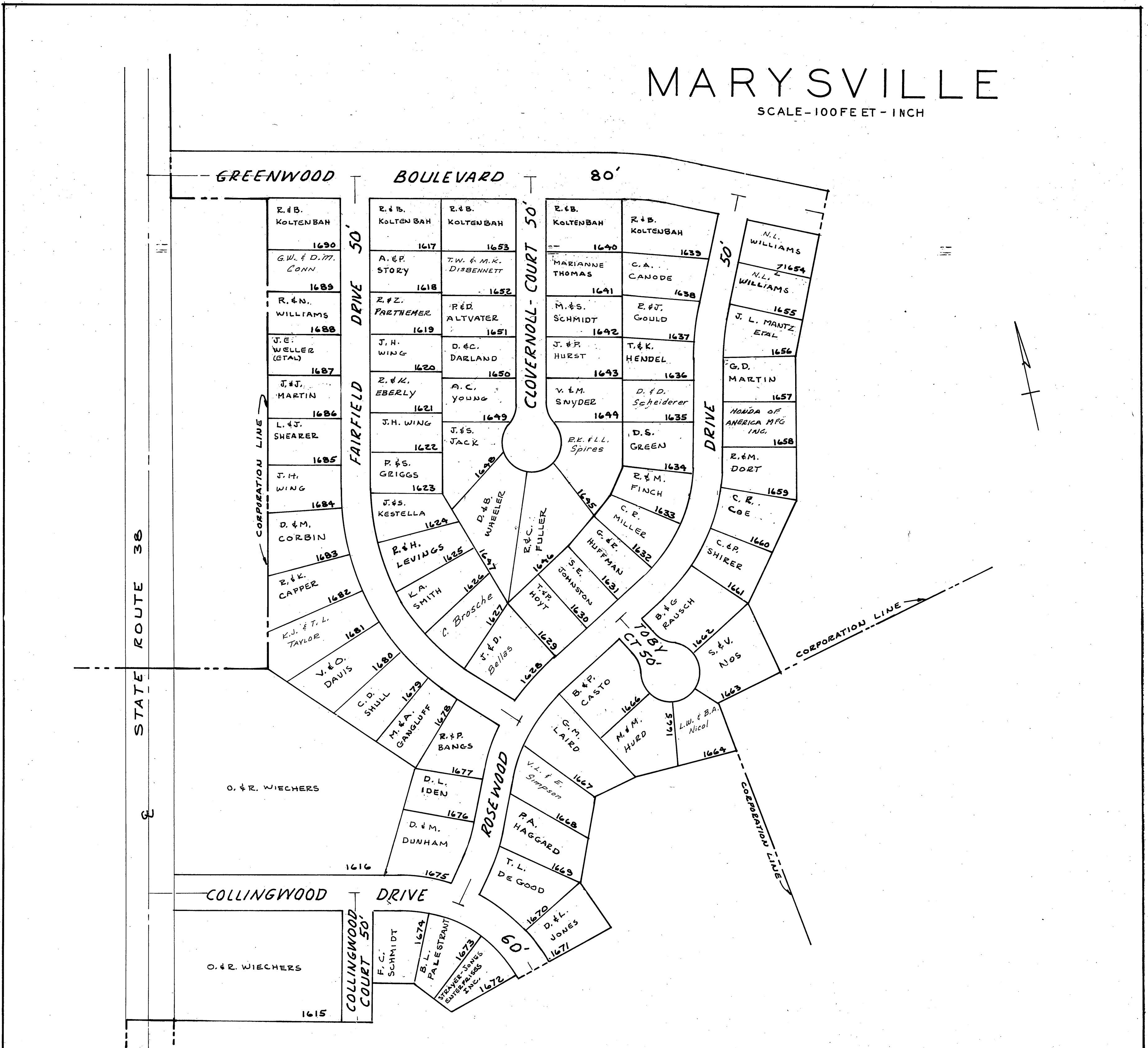


Corrected Jan 1, 1986

Sheet 13

MARYSVILLE

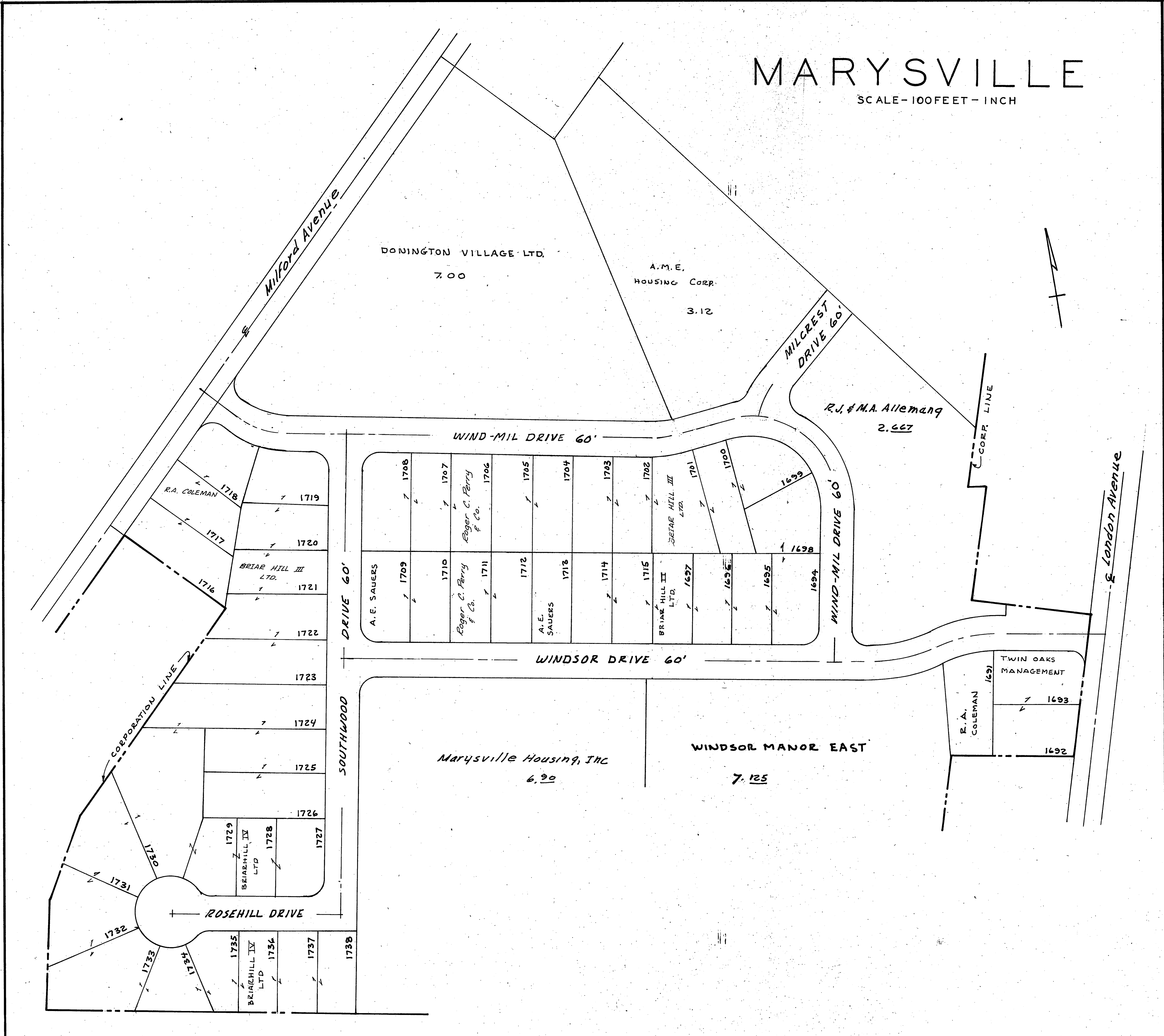
SCALE - 100 FEET - INCH



Corrected JAN 1 1986
Sheet 14

MARYSVILLE

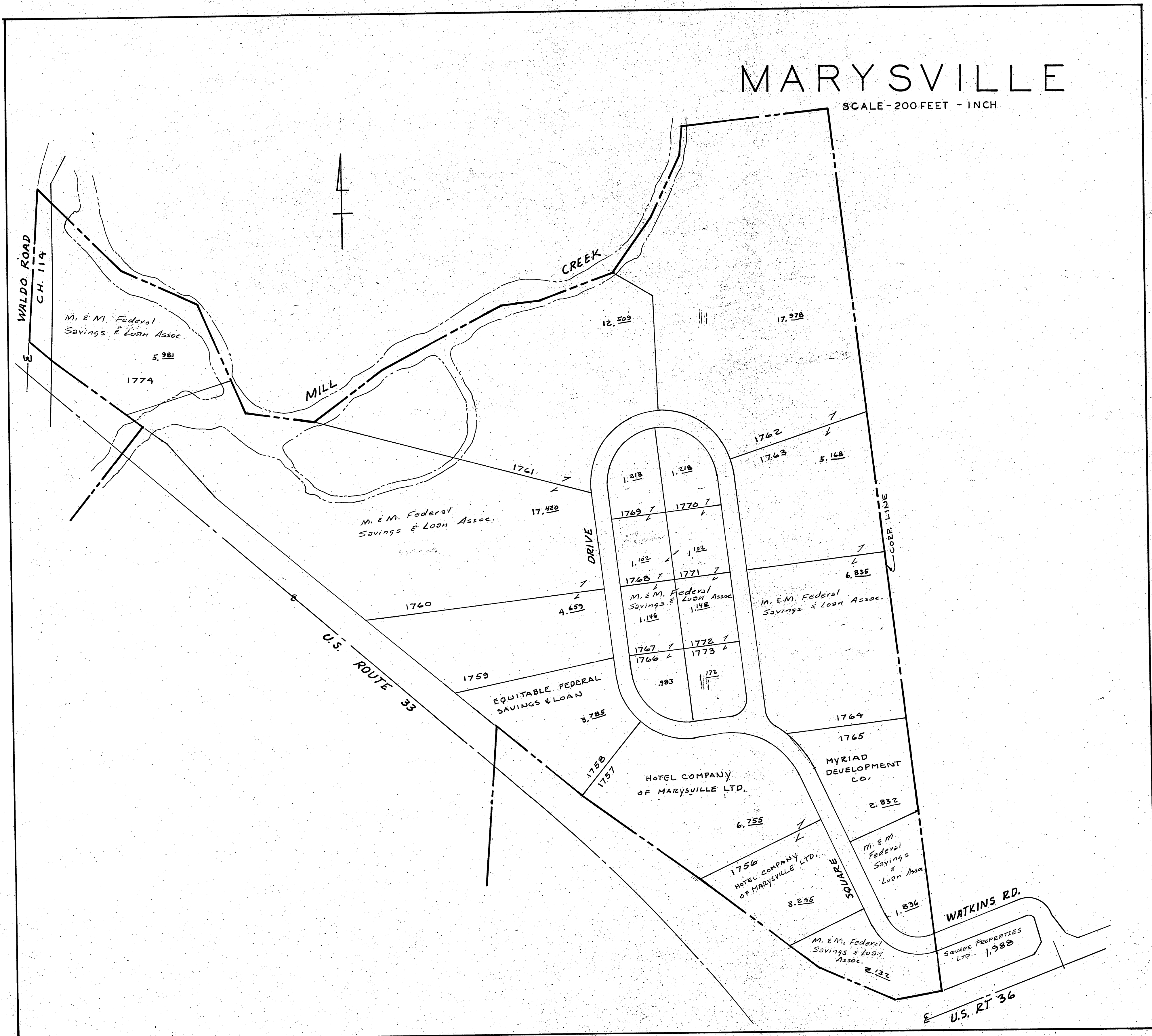
SCALE - 100 FEET - INCH



Corrected JAN 1 1986
Sheet 15

MARYSVILLE

SCALE - 200 FEET - INCH

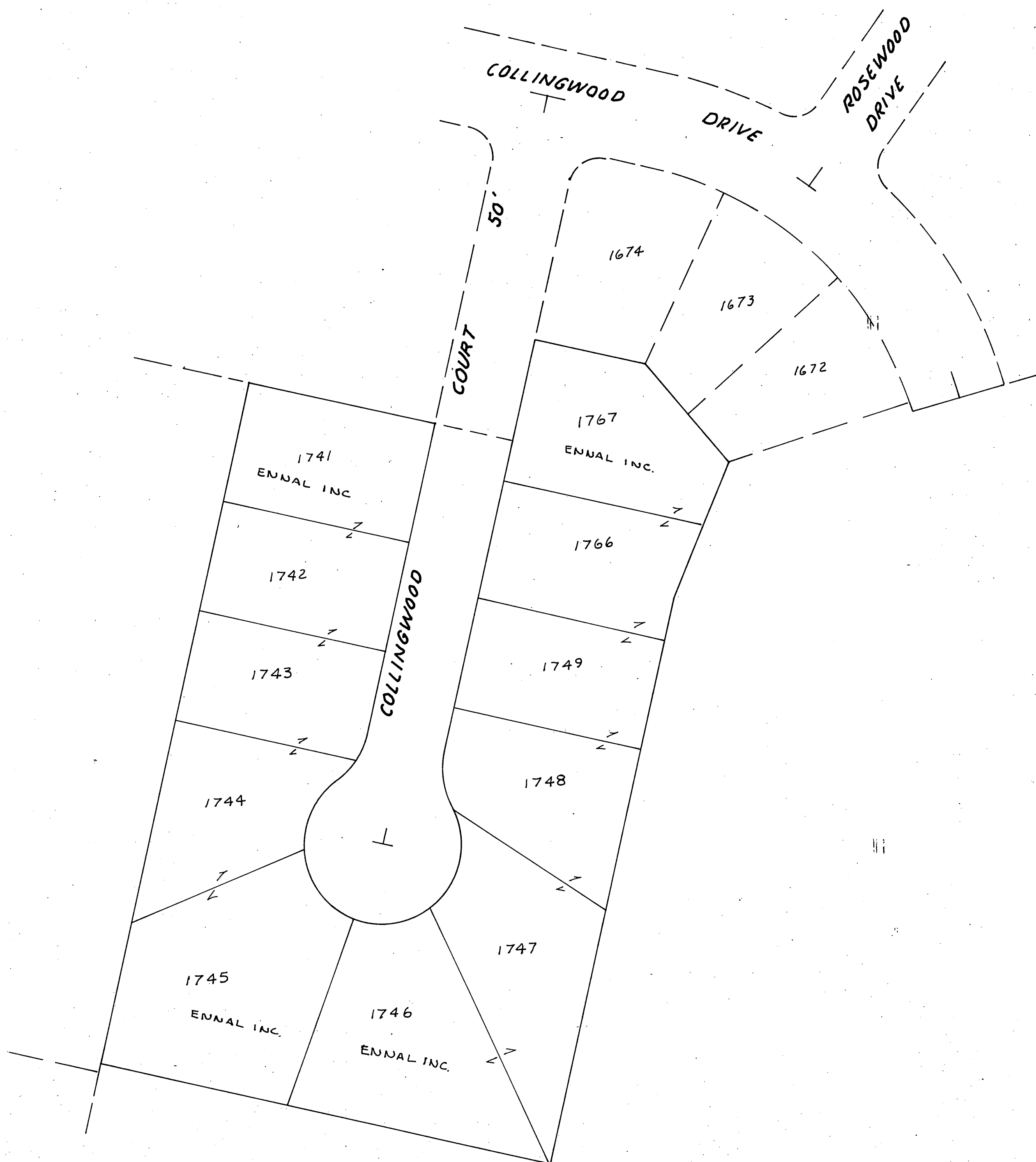


Corrected JAN 1 1986

Sheet 16

MARYSVILLE

SCALE- 50 FEET=1 INCH



Corrected JAN 1 1986
Sheet 17