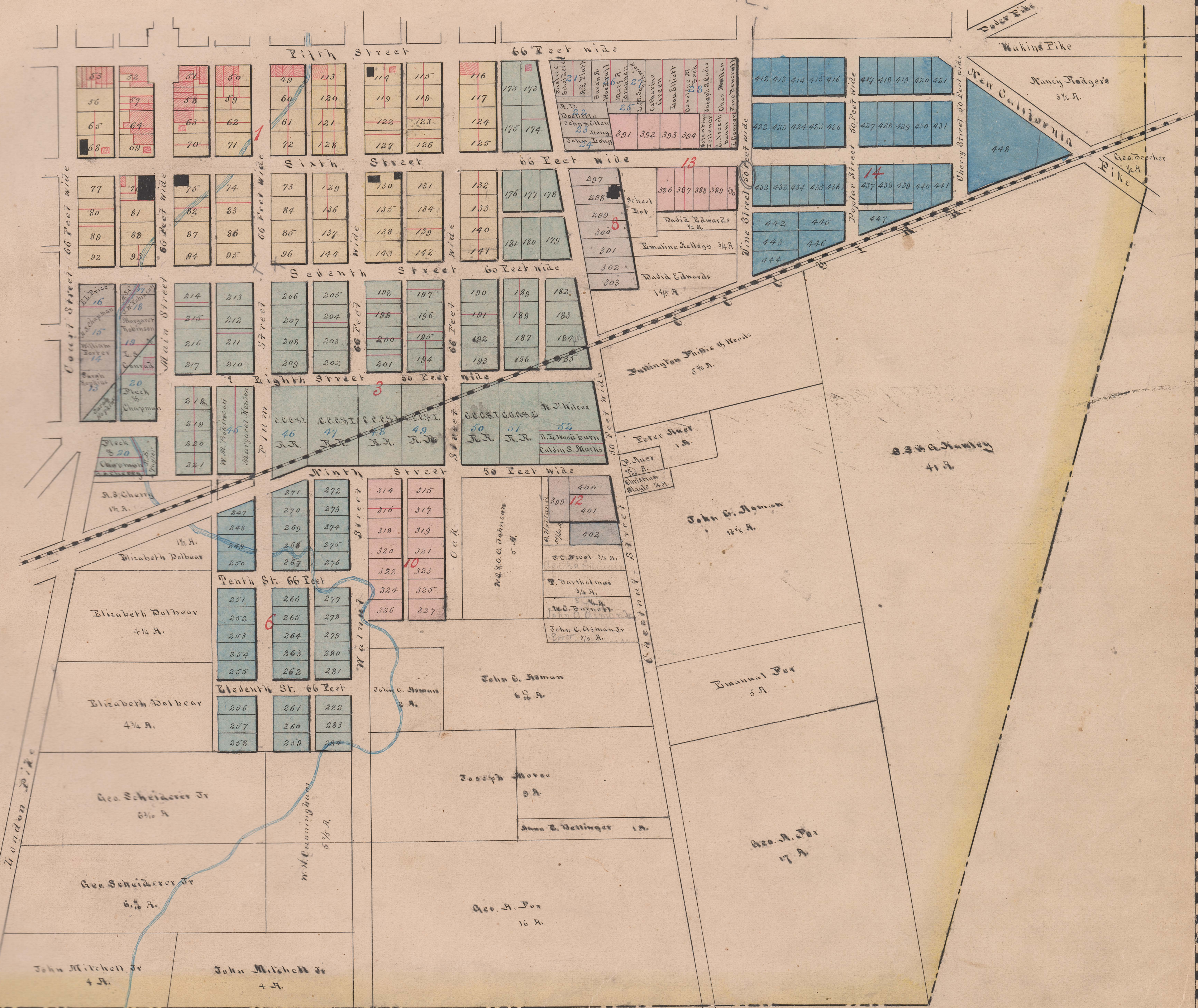


P-309



**MARYSVILLE CORPORATION**  
**SOUTH EAST PART**

Scale 15 Feet



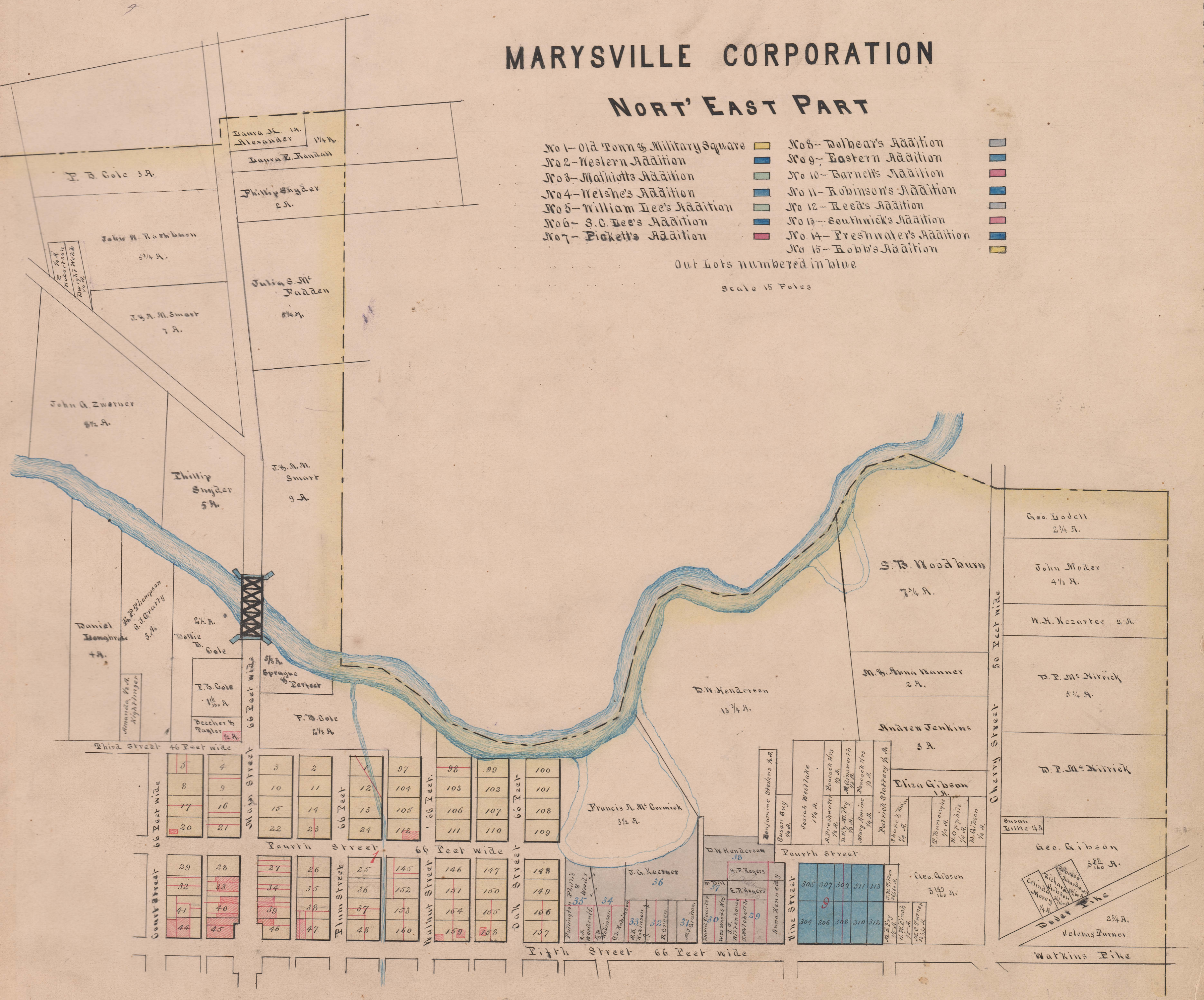
# MARYSVILLE CORPORATION

## NORT' EAST PART

- No 1- Old Town & Military Square
- No 2- Western Addition
- No 3- Mathiots Addition
- No 4- Welsh's Addition
- No 5- William Lee's Addition
- No 6- S.C. Lee's Addition
- No 7- Pickett's Addition
- No 8- Debear's Addition
- No 9- Eastern Addition
- No 10- Barnetts Addition
- No 11- Robinson's Addition
- No 12- Reed's Addition
- No 13- Southwicks Addition
- No 14- Freshwaters Addition
- No 15- Robb's Addition

Out Lots numbered in blue

Scale 15 Feet



Dania M. Alexander 1 1/4 A.  
 Dania E. Randall  
 Philip Snyder 2 A.

Julia S. McFadden 5 1/4 A.

J. S. M. Smart 9 A.

F. B. Cole 2 1/4 A.

Francis A. Mc Cormick 3 1/2 A.

D.W. Henderson 15 3/4 A.

S. B. Woodburn 7 3/4 A.

M. S. Anna Manner 2 A.

Andrew Jenkins 5 A.

Eliza Gibson 1 1/2 A.

Geo. Gibson 3 1/2 A.

Geo. Gibson 5 1/2 A.

Veloras Turner 2 1/4 A.

Third Street 46 Feet wide

Fourth Street 66 Feet wide

Fifth Street 66 Feet wide

Main Street 66 Feet wide

Plum Street 66 Feet wide

Walnut Street 66 Feet wide

Oak Street 66 Feet wide

Nine Street

Cherry Street 50 Feet wide

Water Pike

# MARYSVILLE CORPORATION NORTH WEST PART

Scale 15 Feet

