

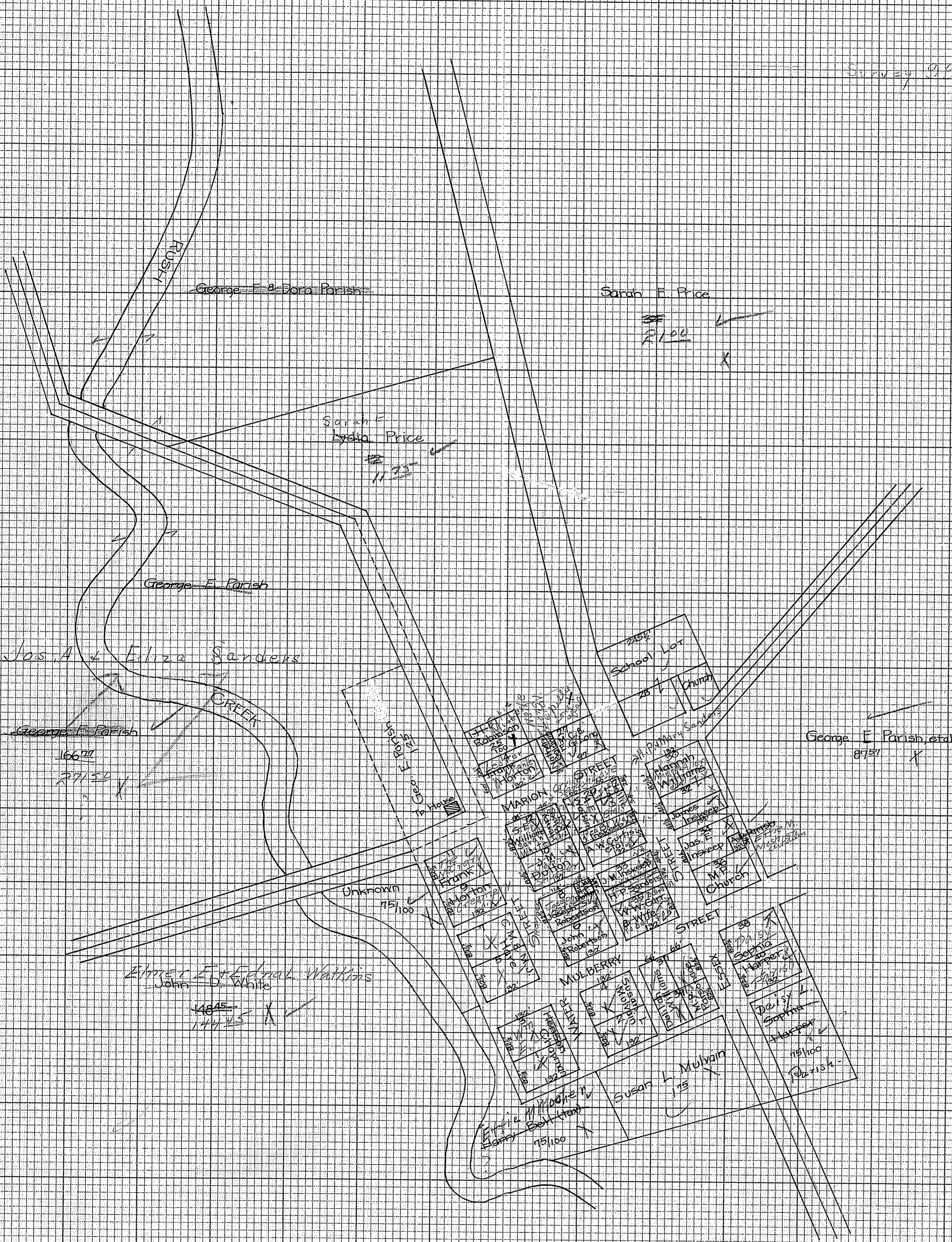
Streets 40' wide
 Alleys 10' wide
 Lots 5' wide in width from N.S.
 8 " " " " " " E. 7'

BK 7/21/22

STANDARD CROSS SECTION 10X10
KEUFFEL & ESSER CO NEW YORK

ESSEX

Survey 1892



Streets 4 poles wide alleys 1 pole
Lots 5 rods x 8 rods.