

PARIS

TOWNSHIP



TOWNSHIP

UNION

MADISON

COUNTY

MAP OF
 DARBY
 TOWNSHIP
 UNION COUNTY
 OHIO

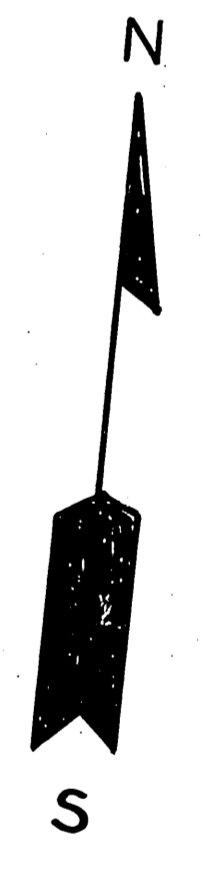
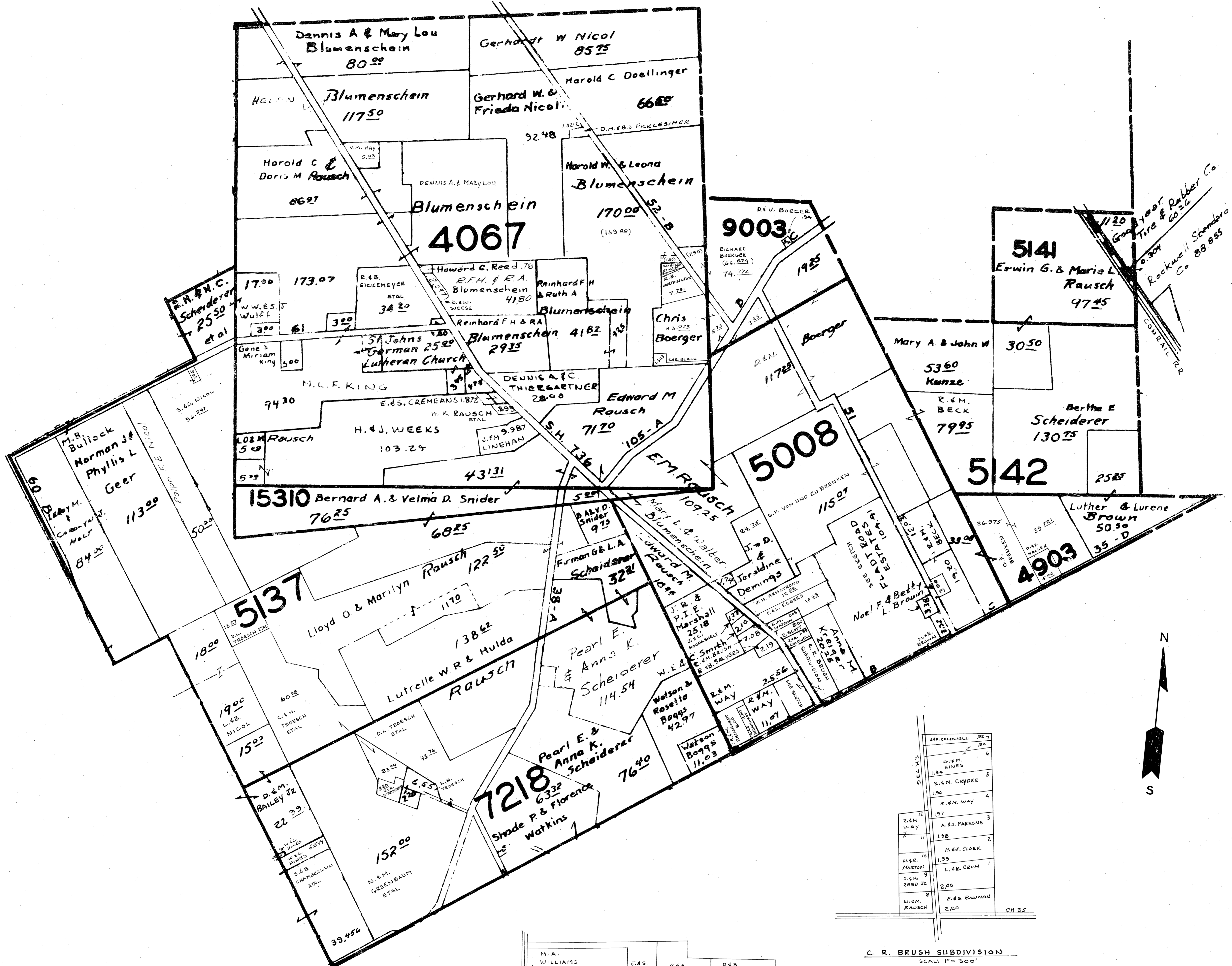
SCALE - 4 IN. = 1 MILE



JEROME

TOWNSHIP

CORRECTED Jan. 1, 1935



C. R. BRUSH SUBDIVISION
SCALE: 1" = 300'

| | | |
|----|---------------|------|
| 1 | J.R. CALDWELL | 22.7 |
| 2 | C.H. HINES | 28.6 |
| 3 | R.M. CROYER | 5 |
| 4 | 1.26 | |
| 5 | R.M. WAY | 9 |
| 6 | 1.97 | |
| 7 | A.S. PARSONS | 3 |
| 8 | 1.38 | |
| 9 | H.G. CLARK | 2 |
| 10 | 1.35 | |
| 11 | L.E. CUM | 1 |
| 12 | 2.00 | |
| 13 | E.S. BONMAN | 2.20 |
| 14 | 2.20 | |

CH. 35

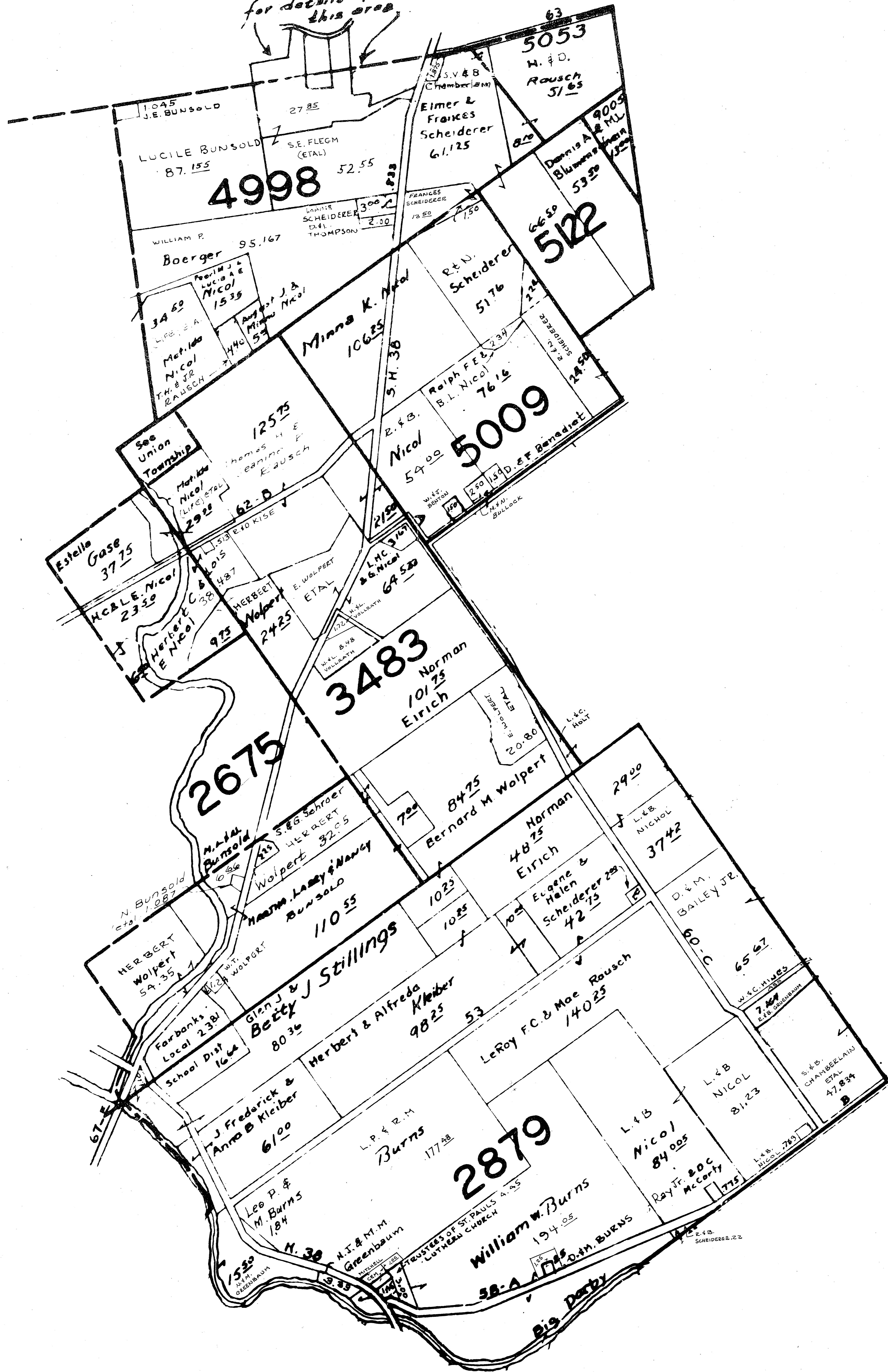
FLADT ROAD ESTATES
SCALE: 1" = 400'

| | | | | |
|---|---------------|------------|----------------|-------------|
| 1 | M.A. WILLIAMS | J.S. POE | D.B. RANDLETON | D.B. MCKEAN |
| 2 | J.E. MIDHALL | | 8.506 | 8.307 |
| 3 | S.M. WALKER | | | |
| 4 | C.L. SEAN | | | |
| 5 | | | | |
| 6 | A.D. SHORT | | | |
| 7 | | | | |
| 8 | R.H. FABER JR | N.B. BROWN | | |
| 9 | 3.32 | 3.35 | | |

CH. 35

SCALE-8 IN - - - 1 MILE

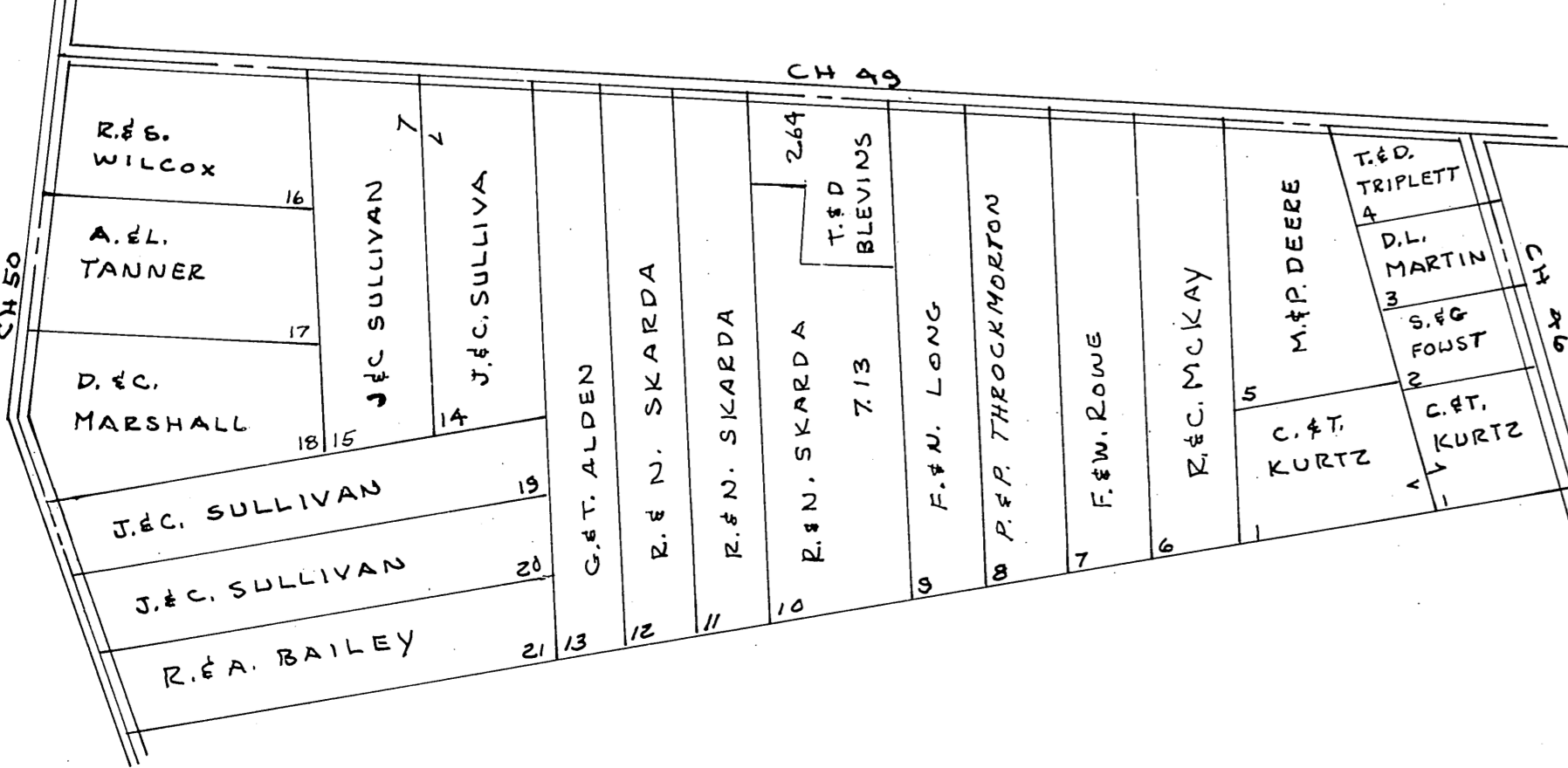
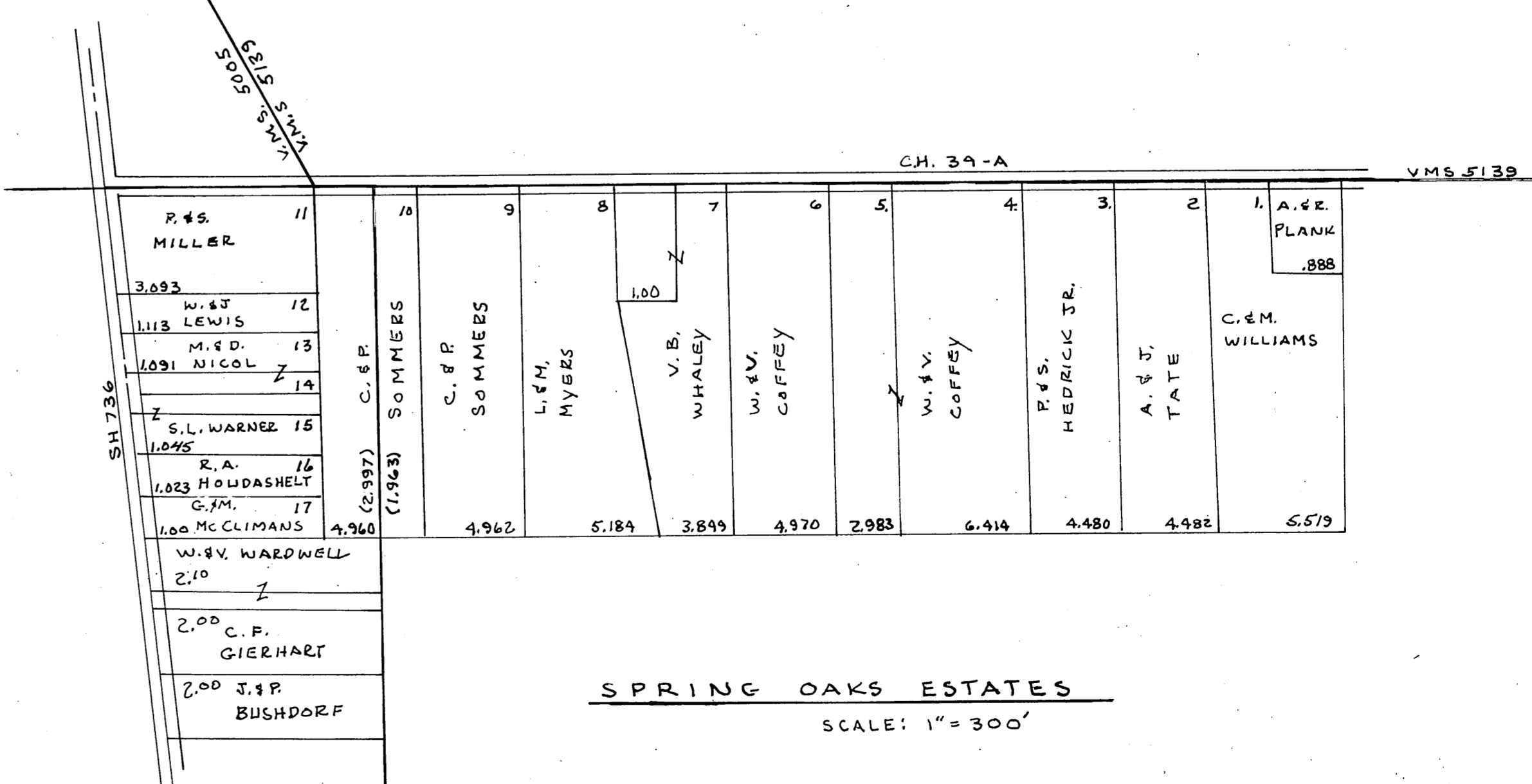
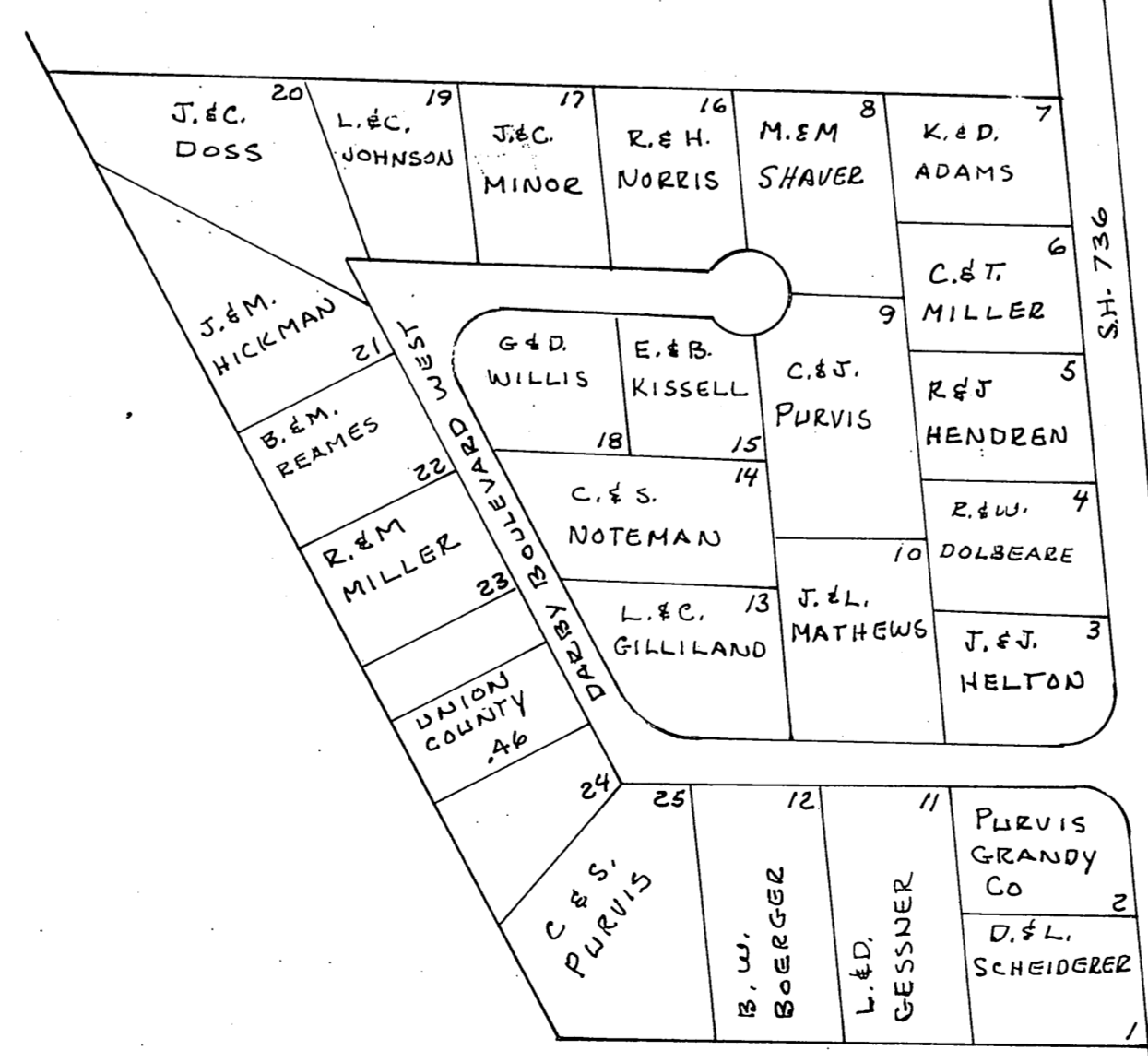
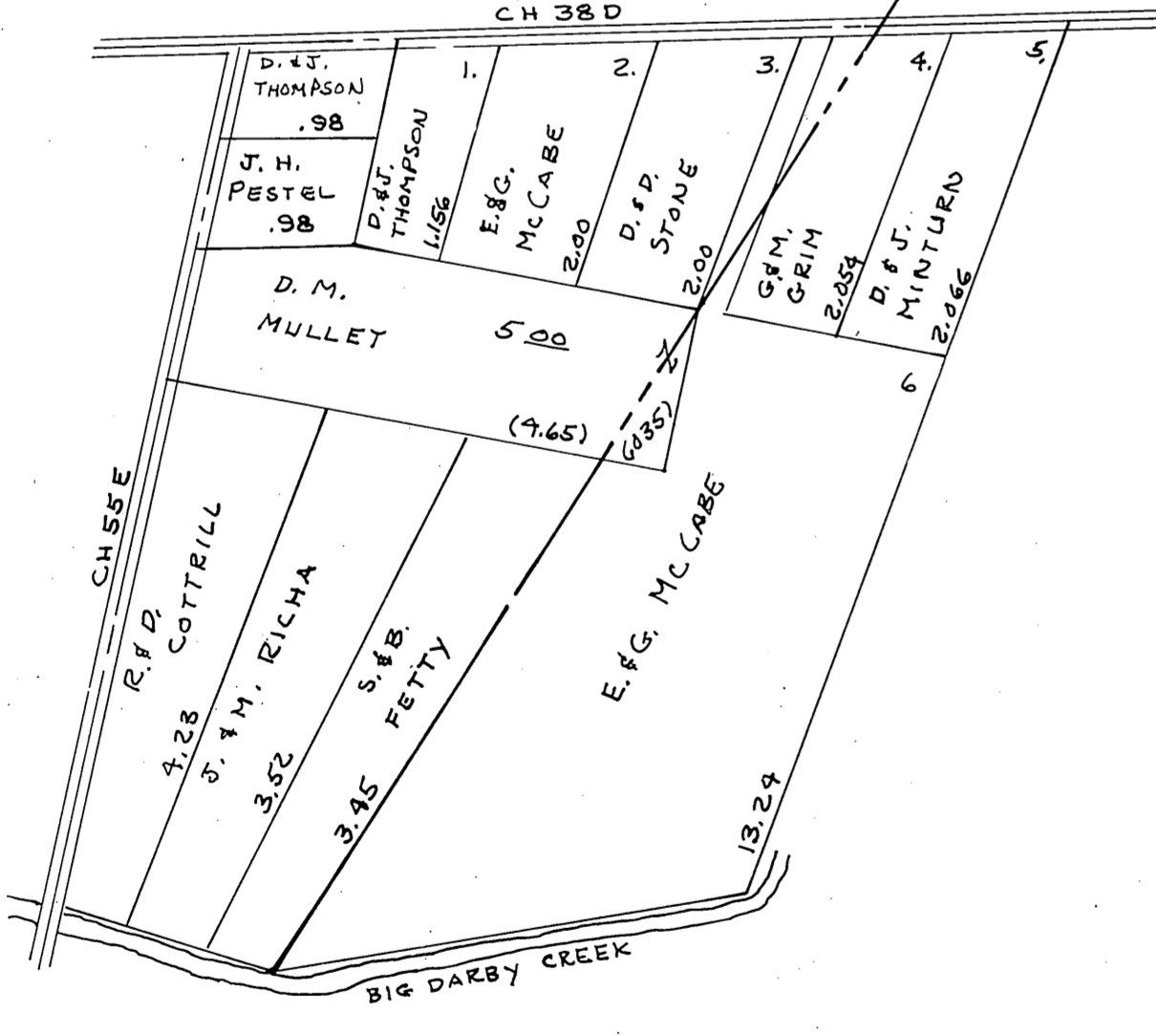
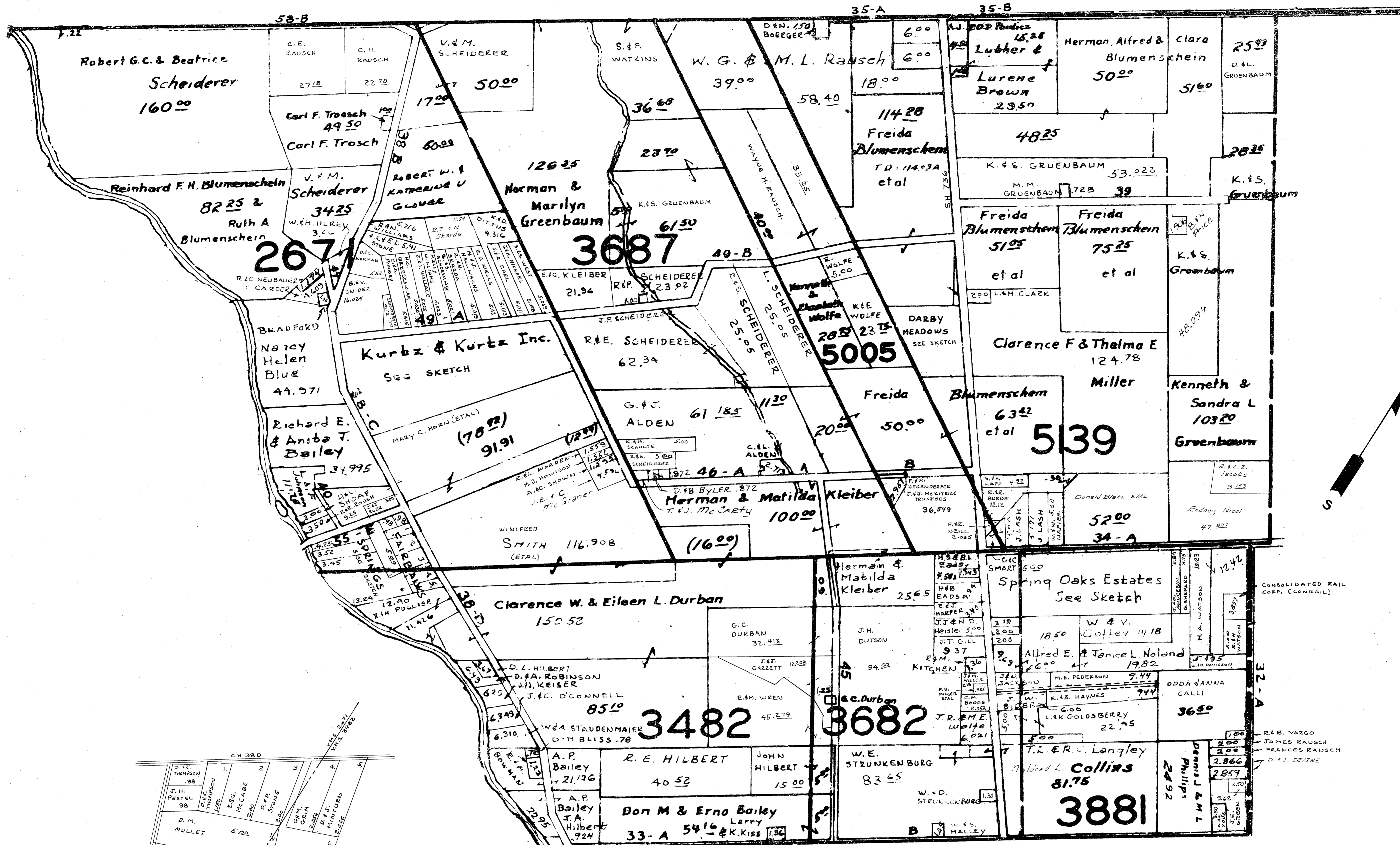
Note:
See Paris Twp.
Sheet No 3
for details of
this area



SCALE-8 IN - - - MILE

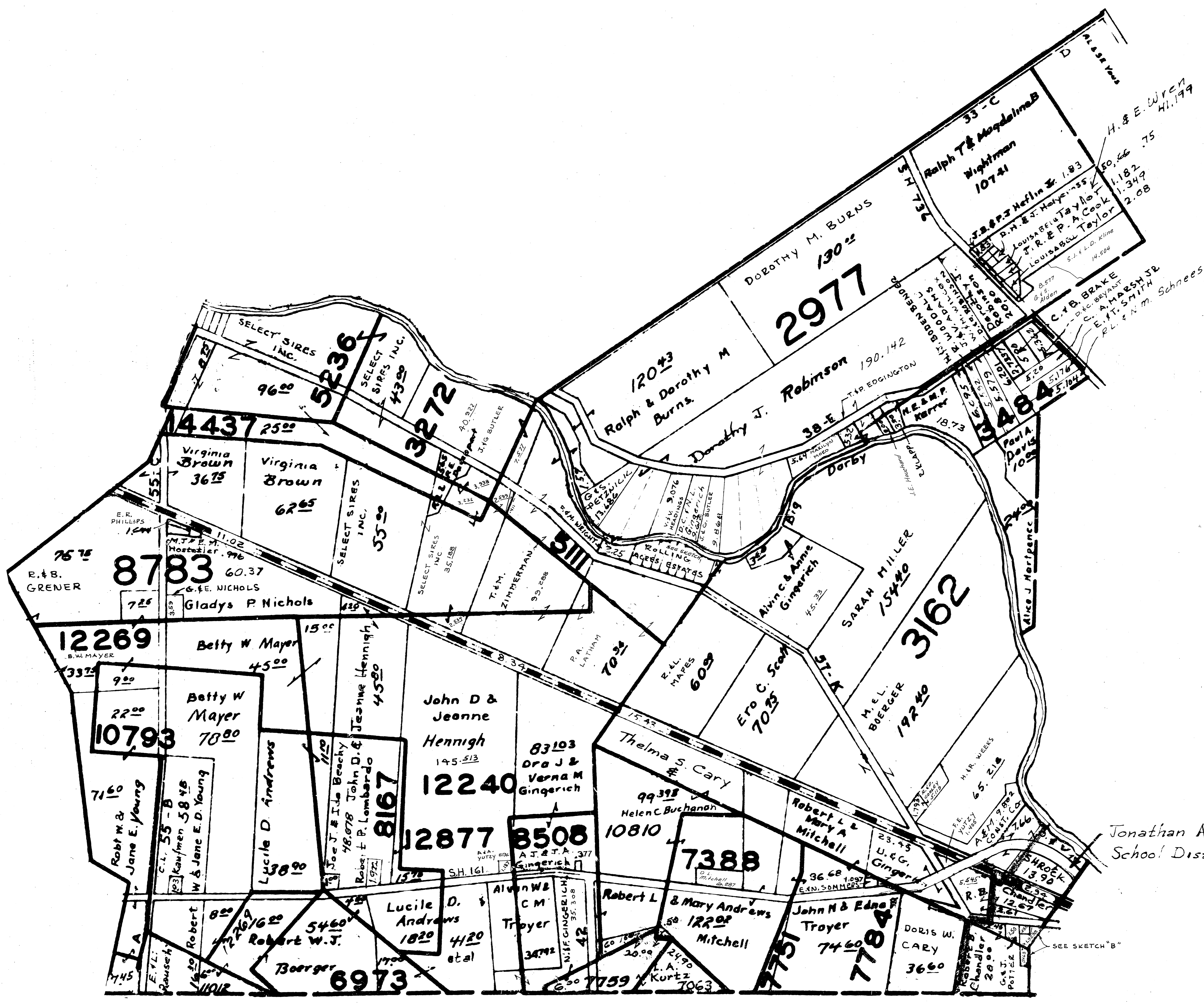
DARBY (3)

11-13-64 CORRECTED JAN 1 1985



KURTZ & KURTZ INCORPORATED
SCALE: 1" = 400'

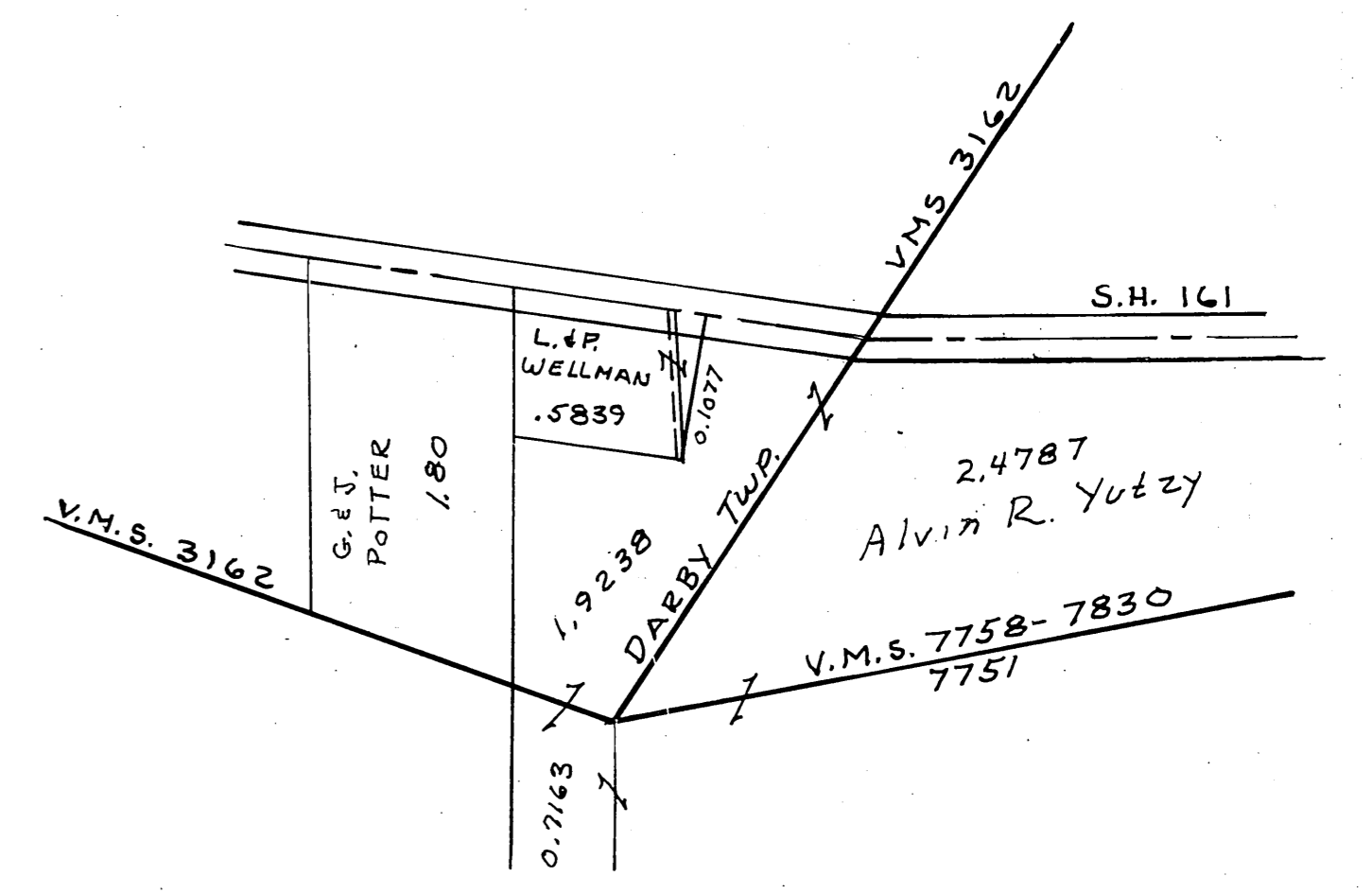
SCALE - 8 IN - - - 1 MILE



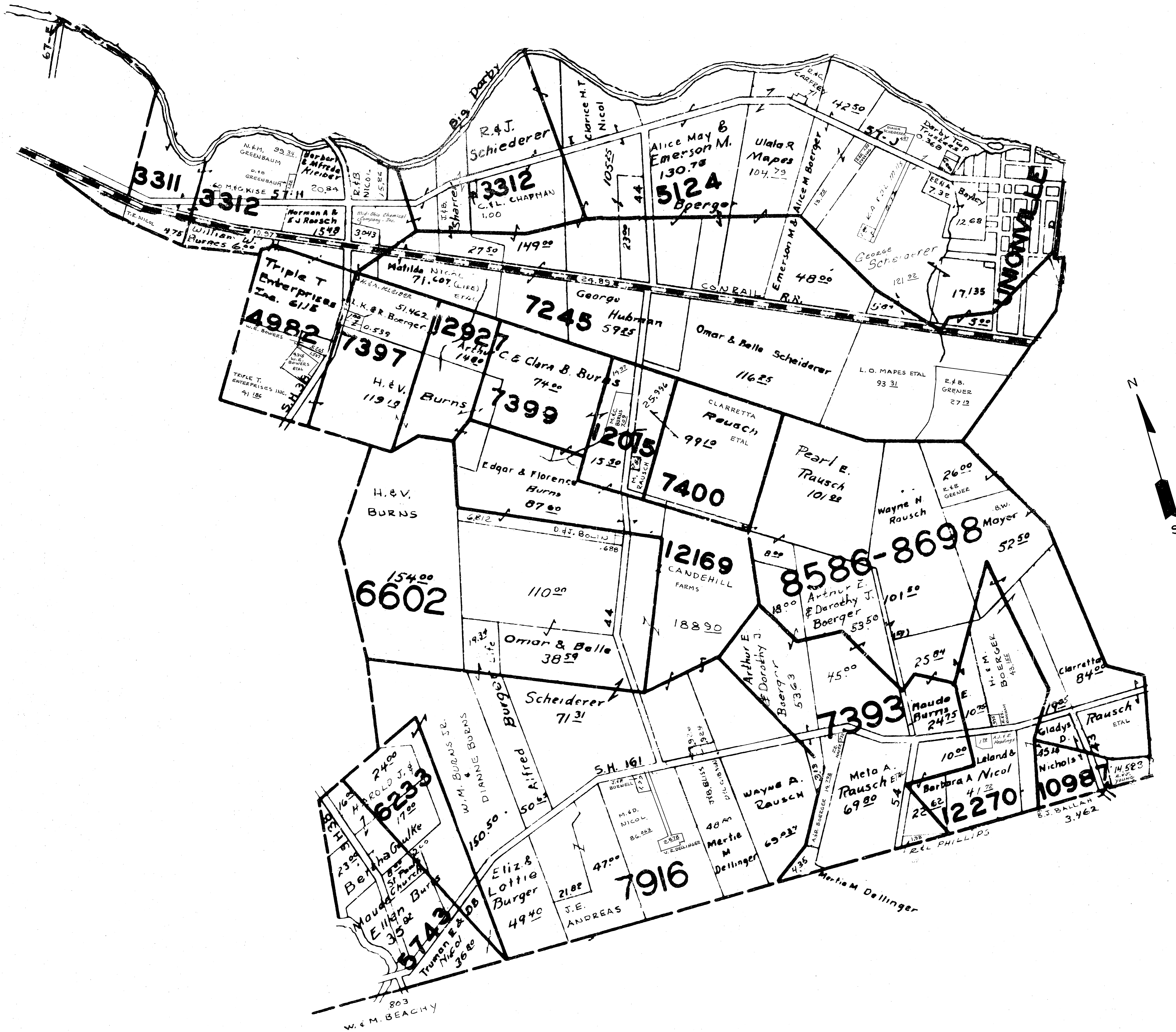
Jonathan Alce School District

| | | | | | | |
|---------------|----------------|-----------|--------------|---------------|-------------|-------|
| 1 | 2 | 3 | 4 | 5 | 6 | 7 |
| M.B. PHILLIPS | D.R. SHAWALTER | C.T. CEVE | C.M. MERRILL | D.F. CROCKETT | B.L. BONINI | |
| 1.526 | 1.632 | 1.848 | 1.880 | 1.738 | 1.547 | 1.472 |
| CH. 57-K | | | | | | |

ROLLING ACRES ESTATES
SCALE: 1" = 200'



SKETCH "B"
SCALE: 1" = 200'



SCALE-8 IN - - - 1 MILE