

Industrial Assessment Center

In 2012, the Mid-Atlantic Industrial Assessment Center housed at the University of Delaware was recognized by the U.S. Department of Energy with the Center of Excellence Award.

The Mid-Atlantic Industrial Assessment Center has been contracted to perform the energy assessments at your facility. This energy assessment not only provides you with energy saving recommendations, but also provides our future engineers with a hands-on learning opportunity!



UNIVERSITY OF
DELAWARE

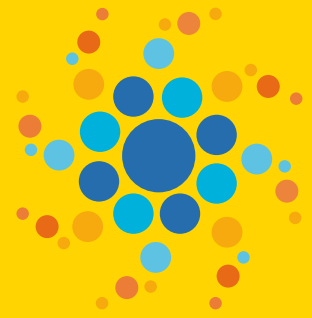
Energize
Delaware

An initiative of Delaware's Sustainable Energy Utility

Delaware Sustainable Energy Utility

500 West Loockerman St.
Suite 400
Dover, Delaware 19904
(302) 883-3048
www.energizedelaware.org

Delaware
Sustainable
Energy Utility



dle
SEU

Energy Assessment Program for:

- Non-Profits
- Public Agencies
- Businesses

*Delivering Energy Savings
to Delaware homes and
businesses while
preserving our
environment.*





Energy Assessments

From the University of Delaware IAC and the Delaware Sustainable Energy Utility



F.A.Q.'s

WHAT IS ENERGIZE DELAWARE?

Energize Delaware is a program of Delaware's Sustainable Energy Utility (SEU) which is a non-profit organization created by the State of Delaware to foster a sustainable energy future through conservation, efficiencies and the use of renewable energy sources, like solar, wind and geothermal. Its model is the first of its kind to be established in the U.S.

WHAT'S AN ENERGY ASSESSMENT?

An energy assessment is an important first step in understanding your energy usage – putting you on the path to save money on your monthly electricity and natural gas bills. Energy Audits can help find trouble spots that can be fixed to make your building more energy efficient and comfortable.

WHO DOES THE ASSESSMENTS?

Industrial Assessment Centers (IAC) are national programs funded by the Department of Energy. The University of Delaware houses the Mid-Atlantic IAC. Through SEU support, the IAC provides its services to nearly any kind of non-residential building in Delaware!

WHAT DO YOU GET?

Most buildings visited by our University of Delaware IAC save companies 10-30% on energy bills!

- Recommendations ranked by the Highest Rate of Return, including no cost options if any.
- SEU Low Interest Financing Options
- Increased Building Comfort Levels
- Longer Equipment Lifespan
- Improved Building Operations

HOW DO WE DO IT?

- Assess Utility Bills
- Complete Light Level Testing
- Analyze HVAC System
- Review Building Envelope and Insulation
- Thermal Imaging
- Review Operations and Maintenance Plans
- Measure Energy Usage
- Perform Data Logging

WHO IS ELIGIBLE?

All non-residential buildings are eligible for an assessment, including businesses, non-profit organizations, and the public sector.

OK, SO WHAT'S THE COST?

For non-profit/Government: the SEU covers 90% of audit cost; this can range from \$400 to \$1600 depending on energy usage. For profits, fee is to be determined after consultation.

HOW TO GET STARTED?

Call Tony DePrima, Executive Director
Delaware Sustainable Energy Utility
500 West Loockerman St.
Suite 400
Dover, Delaware 19904
(302) 883-3038
tony.deprima@deseu.org

Delaware
Sustainable
Energy Utility

