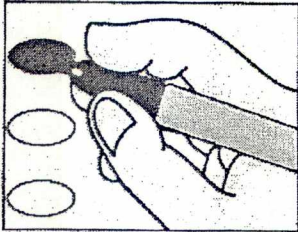


### Making selections:



Correct



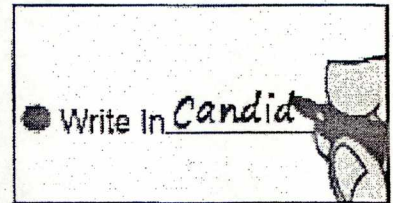
Fill in the oval to the left of your choice.

You must fill in the oval for your vote to count.

Do not cross out your vote or make any marks outside the voting oval or your vote might not count.

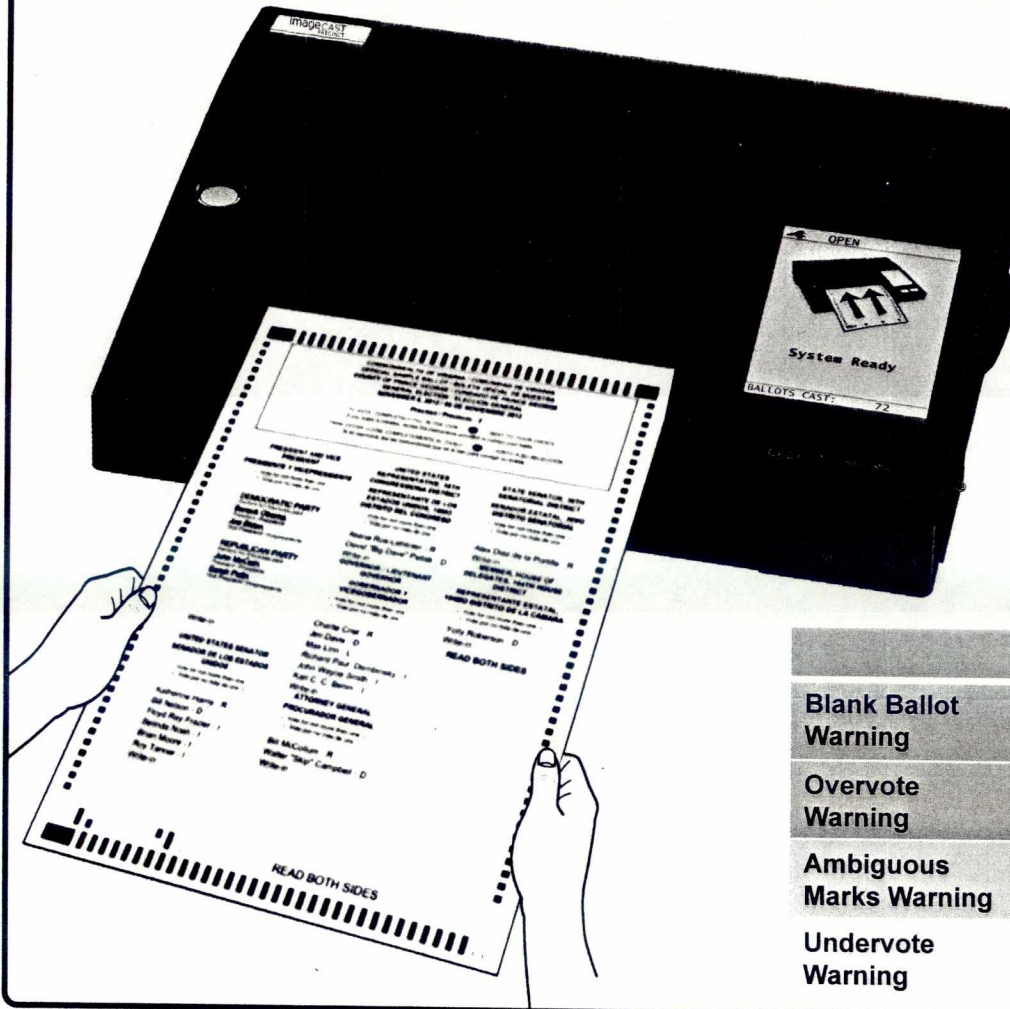
If you make a mistake, ask a poll worker for another ballot.

### Optional Write In:



To vote for a candidate that is not on the ballot, fill in the oval to the left of "Write In" and print the name clearly on the line to the right.

# SCANNING A BALLOT



## Feed your ballot into the tabulator.

When a valid ballot is scanned, the screen will display the messages “Casting Ballot” and “Ballot Successfully Cast”.

Once the ballot is in the ballot box, the “System Ready” screen will reappear and the “BALLOTS CAST” counter at the bottom of the screen will have increased by one.

### Tabulator Warning Messages

<b>Blank Ballot Warning</b>	The tabulator does not detect any voter selections on the scanned ballot. Please ensure you used a proper marking pen.
<b>Overvote Warning</b>	One or more contests have too many votes. If you choose to cast the ballot as-is, contests with too many votes will not be counted.
<b>Ambiguous Marks Warning</b>	The tabulator detected marks on the ballot but the selections are not clear. The ballot will be returned automatically.
<b>Undervote Warning</b>	One or more contests is not fully voted. Your selections will still be counted.