

Playgrounds & Benches

Please review and submit your comments on the comment form.

Comments will be accepted until July 14, 2017.

Continental Park

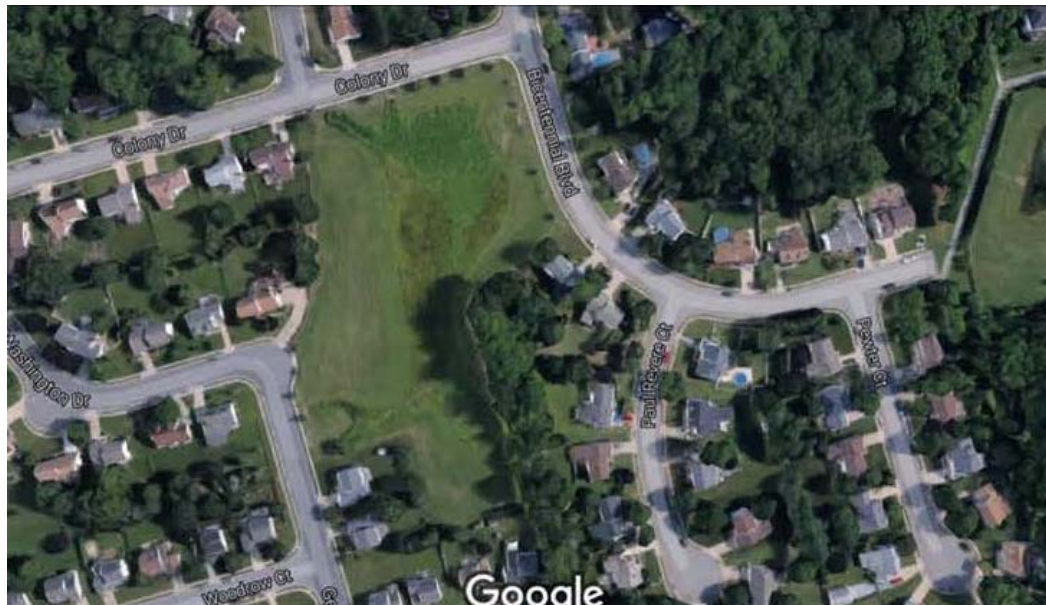
Where is this area would you like to see playground equipment placed?

How about the installation of benches?

Alternatively, would you like to see a playground structure that would include seating for parents in the open space area off Colony Drive?



Colony Drive Open Space



Submit comments by July 14, 2017

Email: ccourtney@dover.de.us

Fax: (302) 678-2674

Mail/In person: City of Dover Parks & Recreation
10 Electric Avenue
Dover DE 19904

Comments



Please share your comments with us.

Which age group of playground equipment would you like to see? (ie: 3 – 5 Years **OR 6 – 12 Years)**

If we move forward with installing playground equipment, where would like to see equipment installed? (Continental Park **OR Open Space area off of Colony Drive)**

With these improvements, there is an impact to the city budget. It may be necessary to raise funding thru increased property taxes. Are you in favor of this project with the potential for tax increases?

Would you participate in a Fundraiser for both Dover Park and Continental Park in an effort to raise funding for the playground equipment?

Additional Feedback/Comments (Ideas to share)
