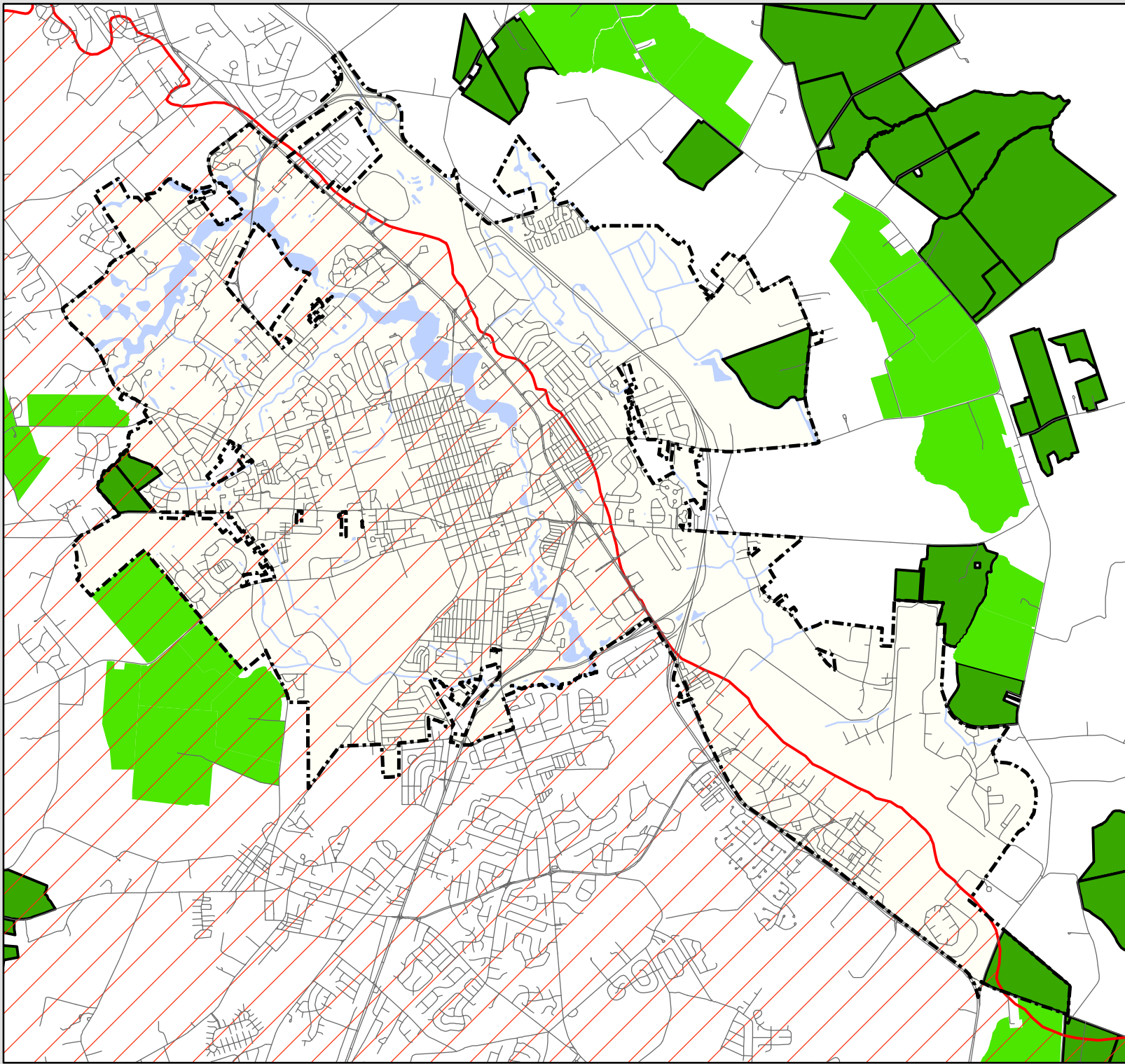







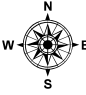


City of Dover, Delaware

Map 5-2: Regional Environmental Features




-  St. Jones Watershed
-  Agricultural District
-  Agricultural PDR
-  Municipal Boundaries
-  Roads
-  Hydrology
-  Water Bodies

 **As Adopted On
February 9, 2009**

0 4,000 8,000 Feet

Paper Map DISCLAIMER:
By acceptance of this map material, you agree to the following:
This map material is made available by the City of Dover, Delaware as a public service. The material is for reference purposes only, and the City makes no warranty, representation, or guaranty as to the accuracy of the material. You release the City, its agents, servants, and employees, from any and all liability related to the material, including its accuracy, availability, use, and misuse. In no event shall the City be liable for any direct or indirect damages suffered related to the use of this data including, but not limited to, physical injury, death, property damage, economic loss, or other consequential damages suffered by the Recipient or others arising from any inadequacies of the digital data or the Recipient's use of this data.
The material is in the public domain and may be copied without permission. Citation to the source would be appreciated.
Any errors or omissions in the material should be reported to the City of Dover, Delaware's Public Services GIS Department.

 Date Printed: February 26, 2009
Date Created: May 29, 2008
File: m:\gis_data\projects\tech_mxds\rcmp plan maps\regional_environmental_features
Department: Public Services GIS
City of Dover, Delaware