

# City of Dover

**MAYOR AND COUNCIL**

## COUNCIL RESOLUTION NO. 2013-25

**A RESOLUTION PROPOSING THE VACATING AND ABANDONMENT OF A CERTAIN IMPROVED STREET SITUATED IN THE CITY OF DOVER.**

**BE IT RESOLVED BY THE MAYOR AND COUNCIL OF THE CITY OF DOVER, IN COUNCIL MET:**

Section 1. The Council of the City of Dover favors the vacating and abandonment of the following street:

Harmony Lane, as specified in Exhibits A and B to this resolution, being all that tract or parcel of land situate, lying and being in East Dover Hundred, Kent County, State of Delaware, and located on the north side of Walker Road and being more particularly described as follows: Beginning for the same at a point at the south easterly corner of the property hereon described; thence running by/with the north side of Walker Road, South 82 degrees 51 minutes 50 seconds West a distance of 110.14' to a point, thence running by/with the east side of "Tract A" an arc to the left with a radius of 25.00' and a length of 40.55' with a chord bearing of North 36 degrees 23 minutes 49 seconds East and a chord distance of 36.25' to a point, thence running by/with the east side of "Tract A" North 10 degrees 04 minutes 00 seconds West a distance of 160.78' to a point, thence running by/with the east side of Lots 1 through 7 an arc to the right with a radius of 199.43' and a length of 135.75' with a chord bearing of North 09 degrees 26 minutes 02 seconds East and a chord distance of 133.15' to a point, thence running by/with the east side of Lots 7 through 9, North 28 degrees 56 minutes 00 seconds East a distance of 40.00' to a point, thence running by/with the east side of Lots 9 and 10 an arc to the left with a radius of 107.99' and a distance of 88.58' with a chord bearing of North 05 degrees 26 minutes 04 seconds and a chord distance of 86.12' to a point, thence running by/with the east side of Lots 10 through 14, North 18 degrees 04 minutes 00 seconds West a distance of 66.35' to a point, thence running by/with east side of Lots 14 through 21 an arc to the right with a radius of 120.19' and a distance of 141.11' with a chord bearing of North 15 degrees 34 minutes 05 seconds East and a chord distance of 133.15' to a point, thence running by/with the south easterly side of Lots 21 through 27, North 49 degrees 12 minutes 00 seconds East a distance of 153.27' to a point, thence running by/with the Lots 27 through 35, an arc to the right with a radius of 50.00' and a distance of 203.44' with a chord bearing of South 14 degrees 14 minutes 06 seconds East and a chord distance of 89.44' to a point, thence running by/with the north side of Lot 35, an arc to the left with a radius of 50.00' and a distance of 46.36' with a chord bearing of South 75 degrees 45 minutes 54 seconds West and a chord distance of 44.72' to a point, thence running by/with north westerly side of Lots 35 through 39, South 49 degrees 12 minutes 00 seconds West and a distance of 73.27' to a point, thence running by/with the west side of Lot 39 an arc to the left with a radius of 60.19' and a distance of 70.67' with a chord bearing of South 15 degrees 34 minutes 05 seconds West with a chord distance of 66.68' to a point, thence running by/with the west side of Lots 39 and 40, South 18 degrees 04 minutes 00 seconds East a distance of 66.35' to a point, thence running by/with the west side of Lots 40 through 46, an arc to the right with a radius of 167.99' and a distance of 137.80' with a chord bearing of South 05 degrees 26 minutes 03 seconds West with a chord distance of 133.97' to a point, thence running by/with the west side of Lots 46 through 48, South 28 degrees 56 minutes 00 seconds West a distance of 40.00' to a point, thence running by/with the west side of Lots 48 through 52 an arc to the left with a radius of 139.43' and a distance of 94.91' with a chord bearing of South 09 degrees 26 minutes 02 seconds West

and a chord distance of 93.09' to a point, thence running by/with the west side of Lot 52 and "Tract B", South 10 degrees 04 minutes 00 seconds East a distance of 166.41' to a point, thence running by/with the south side of "Tract B" an arc to the left with a radius of 25.00' and a distance of 37.99' with a chord bearing of South 53 degrees 36 minutes 05 seconds East and a chord distance of 34.44' to the place of beginning, containing 52,756.46 sq. ft. (1.21<sup>+/-</sup> acres).

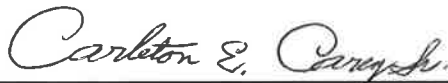
Sixty feet (60') of the subject right of way will be conveyed to the properties specified herein. Abandonment shall be conditional upon completion of the site development plan and parcel consolidation plan. The proposed abandonment shall be void and of no effect if the site development plan is not approved and recorded on or before November 25, 2014. Cross-access and public utility easements will be required for the existing wastewater pump station and associated force main infrastructure located therein. Ownership shall not be relinquished until such time as the parcel consolidation plan is recorded. All stormwater, street, wastewater, and water infrastructure will be abandoned in conjunction with the abandonment of Harmony Lane. The City shall retain ownership of the existing pump station and associated force main only.

Section 2. The Council of the City of Dover will sit on Monday, November 25, 2013, at 7:30 p.m., in the Council Chambers at City Hall, Dover, Delaware, to hear the objections of such residents of the City or owners of the property affected as shall attend, in accordance with the provisions of Section 27 of the Charter of the City of Dover (Chapter 130, Volume 77, Laws of Delaware).

Section 3. The Clerk of Council is hereby directed to post copies of this Resolution in five (5) or more public places in the City of Dover.

ADOPTED: NOVEMBER 12, 2013

S:\ABANDONMENTS\2013\Harmony Lane\2013-25 Setting Public Hearing - Street Abandonment - Harmony Lane FOR SIGNATURE.wpd



CARLETON E. CAREY, SR.  
MAYOR

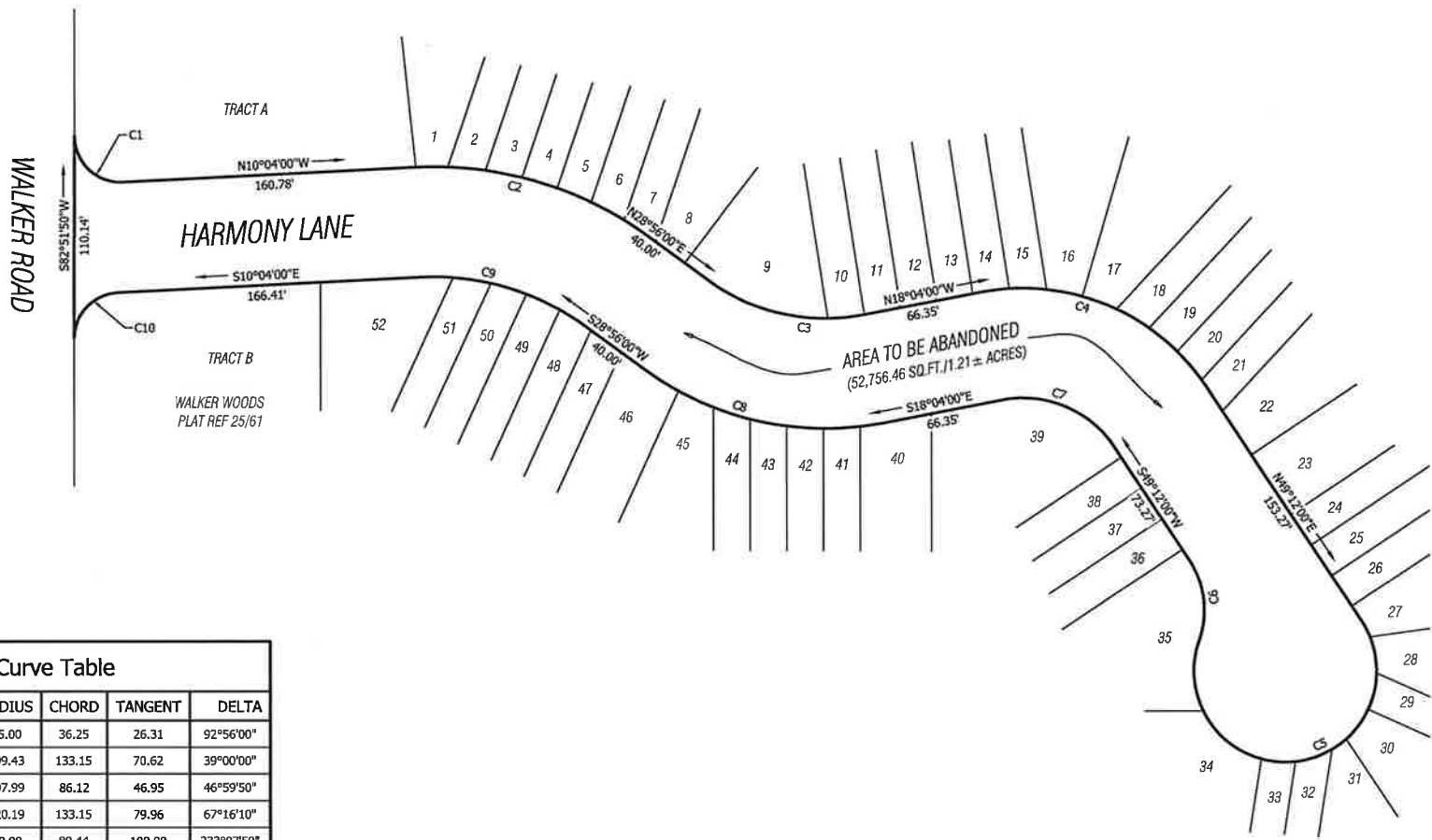


DAVID L. BONAR  
COUNCIL PRESIDENT

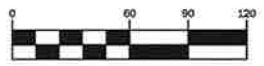
Actions History:

November 12, 2013 - Introduced at City Council

DE STATE GRID NAD 83



| Curve Table |        |        |        |         |            |
|-------------|--------|--------|--------|---------|------------|
| CURVE       | LENGTH | RADIUS | CHORD  | TANGENT | DELTA      |
| C1          | 40.55  | 25.00  | 36.25  | 26.31   | 92°56'00"  |
| C2          | 135.75 | 199.43 | 133.15 | 70.62   | 39°00'00"  |
| C3          | 88.58  | 107.99 | 86.12  | 46.95   | 46°59'50"  |
| C4          | 141.11 | 120.19 | 133.15 | 79.96   | 67°16'10"  |
| C5          | 203.44 | 50.00  | 89.44  | 100.00  | 233°07'50" |
| C6          | 46.36  | 50.00  | 44.72  | 25.00   | 53°07'50"  |
| C7          | 70.67  | 60.19  | 66.68  | 40.04   | 67°16'10"  |
| C8          | 137.80 | 167.99 | 133.97 | 73.04   | 46°59'50"  |
| C9          | 94.91  | 139.43 | 93.09  | 49.38   | 39°00'00"  |
| C10         | 37.99  | 25.00  | 34.44  | 23.75   | 87°04'10"  |



GRAPHIC SCALE  
1 Inch = 60 feet

|                |       |   |       |         |       |
|----------------|-------|---|-------|---------|-------|
| REVISIONS      |       | <b>EXHIBIT A</b>  |       |         |       |
| NO.            | DATE  |   |       |         |       |
| DATE           | BY    | DATE  | BY    | DATE    | BY    |
| 2024_EXHIBIT A | SD/14 | 1991/13   | SD/14 | 1978/21 | SD/14 |
| OWNER          |       | CITY OF DOVER   |       |         |       |
| PROJECT        |       | EAST COVER HUNDRED ELECTION DISTRICT, KENT COUNTY, DELAWARE |       |         |       |
| SCALE          | DATE  | BY  | DATE  | BY      | DATE  |
| 1" = 60'       | 10/24 | SD/14   | 10/24 | SD/14   | 10/24 |

## EXHIBIT B

### Harmony Lane Abandonment

| Parcel ID            | Parcel Address |
|----------------------|----------------|
| ED05-067.18-01-12.00 | 135 HARMONY LN |
| ED05-067.18-01-47.00 | 1361 WALKER RD |
| ED05-067.18-01-41.00 | 52 HARMONY LN  |
| ED05-067.18-01-52.00 | 55 HARMONY LN  |
| ED05-067.18-01-42.00 | 48 HARMONY LN  |
| ED05-067.18-01-38.00 | 64 HARMONY LN  |
| ED05-067.18-01-54.00 | 63 HARMONY LN  |
| ED05-067.18-01-39.00 | 60 HARMONY LN  |
| ED05-067.18-01-40.00 | 56 HARMONY LN  |
| ED05-067.18-01-53.00 | 59 HARMONY LN  |
| ED05-067.18-01-51.00 | 51 HARMONY LN  |
| ED05-067.18-01-28.00 | 104 HARMONY LN |
| ED05-067.18-01-26.00 | 112 HARMONY LN |
| ED05-067.18-01-24.00 | 120 HARMONY LN |
| ED05-067.18-01-63.00 | 123 HARMONY LN |
| ED05-067.18-01-22.00 | 128 HARMONY LN |
| ED05-067.18-01-13.00 | 139 HARMONY LN |
| ED05-067.18-01-66.01 | 1357 WALKER RD |
| ED05-067.18-01-65.00 | 131 HARMONY LN |
| ED05-067.18-01-25.00 | 116 HARMONY LN |
| ED05-067.18-01-61.00 | 115 HARMONY LN |
| ED05-067.18-01-44.00 | 40 HARMONY LN  |
| ED05-067.18-01-49.00 | 43 HARMONY LN  |
| ED05-067.18-01-45.00 | 36 HARMONY LN  |
| ED05-067.18-01-33.00 | 84 HARMONY LN  |
| ED05-067.18-01-55.00 | 67 HARMONY LN  |
| ED05-067.18-01-37.00 | 68 HARMONY LN  |
| ED05-067.18-01-23.00 | 124 HARMONY LN |
| ED05-067.18-01-27.00 | 108 HARMONY LN |
| ED05-067.18-01-64.00 | 127 HARMONY LN |
| ED05-067.18-01-30.00 | 96 HARMONY LN  |
| ED05-067.18-01-60.00 | 87 HARMONY LN  |
| ED05-067.18-01-31.00 | 92 HARMONY LN  |
| ED05-067.18-01-18.00 | 144 HARMONY LN |
| ED05-067.18-01-17.00 | 148 HARMONY LN |
| ED05-067.18-01-19.00 | 140 HARMONY LN |
| ED05-067.18-01-16.00 | 152 HARMONY LN |
| ED05-067.18-01-15.00 | 147 HARMONY LN |
| ED05-067.18-01-20.00 | 136 HARMONY LN |
| ED05-067.18-01-21.00 | 132 HARMONY LN |
| ED05-067.18-01-14.00 | 143 HARMONY LN |
| ED05-067.18-01-58.00 | 79 HARMONY LN  |
| ED05-067.18-01-34.00 | 80 HARMONY LN  |
| ED05-067.18-01-57.00 | 75 HARMONY LN  |
| ED05-067.18-01-35.00 | 76 HARMONY LN  |
| ED05-067.18-01-43.00 | 44 HARMONY LN  |
| ED05-067.18-01-50.00 | 47 HARMONY LN  |
| ED05-067.18-01-32.00 | 88 HARMONY LN  |
| ED05-067.18-01-59.00 | 83 HARMONY LN  |
| ED05-067.18-01-29.00 | 100 HARMONY LN |
| ED05-067.18-01-62.00 | 119 HARMONY LN |
| ED05-067.18-01-48.00 | 39 HARMONY LN  |
| ED05-067.18-01-56.00 | 71 HARMONY LN  |
| ED05-067.18-01-36.00 | 72 HARMONY LN  |