



# WESTERN PLACERVILLE INTERCHANGES

## PHASE 1B PROJECT

CIP # 41413



### CONSTRUCTION UPDATE

Week #9: October 31<sup>st</sup> – November 4<sup>th</sup>

Hi Everyone!

This is a weekly update to the community regarding the Western Placerville Interchanges Phase 1B Project. Construction began Tuesday, September 6<sup>th</sup>, and these weekly updates will be sent via email to interested parties and posted on the City of Placerville's website to keep the community up-to-date on the status of this project. Each update will involve a summary of work completed the prior week, work being performed the current week, work anticipated the following week, and any important information that may impact the community. Thanks in advance for everyone's understanding and patience through this process.

#### Prior Week

- Weather delayed construction as two days were rained out.
- Constructed portions of the modular block retaining walls in Stage 2.
- Began relocating existing utilities in Stage 2.
- Began installation of the new storm drain system in Stage 2.

#### Current Week

- Finish constructing modular block retaining walls in Stage 2.
- Continue relocating existing utilities in Stage 2.
- Finish installation of the new storm drain system in Stage 2.

#### Following Week

- Begin work to relocate two light poles in Stage 2.
- Prepare subgrade for curb, gutter, and sidewalk.

#### Important Information

- Until the beginning of December, **a portion of Fair Lane will be closed 24-hrs a day for Stage 2 construction** (please see attached exhibit for location of Stage 2). **Please adjust your travel routes accordingly.** For access to County buildings, use Ray Lawyer Drive via Placerville Drive.
- **For access to County Elections Office at 2850 Fairlane Court, please use Ray Lawyer Drive via Placerville Drive. Access to Fairlane Court from the Ray Lawyer side is not impacted with this construction.**
- During Stage 2, two street lights will be relocated, and several street lights may be out for a few days during this process.

#### Contacts

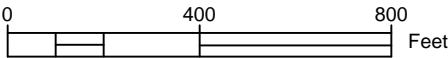
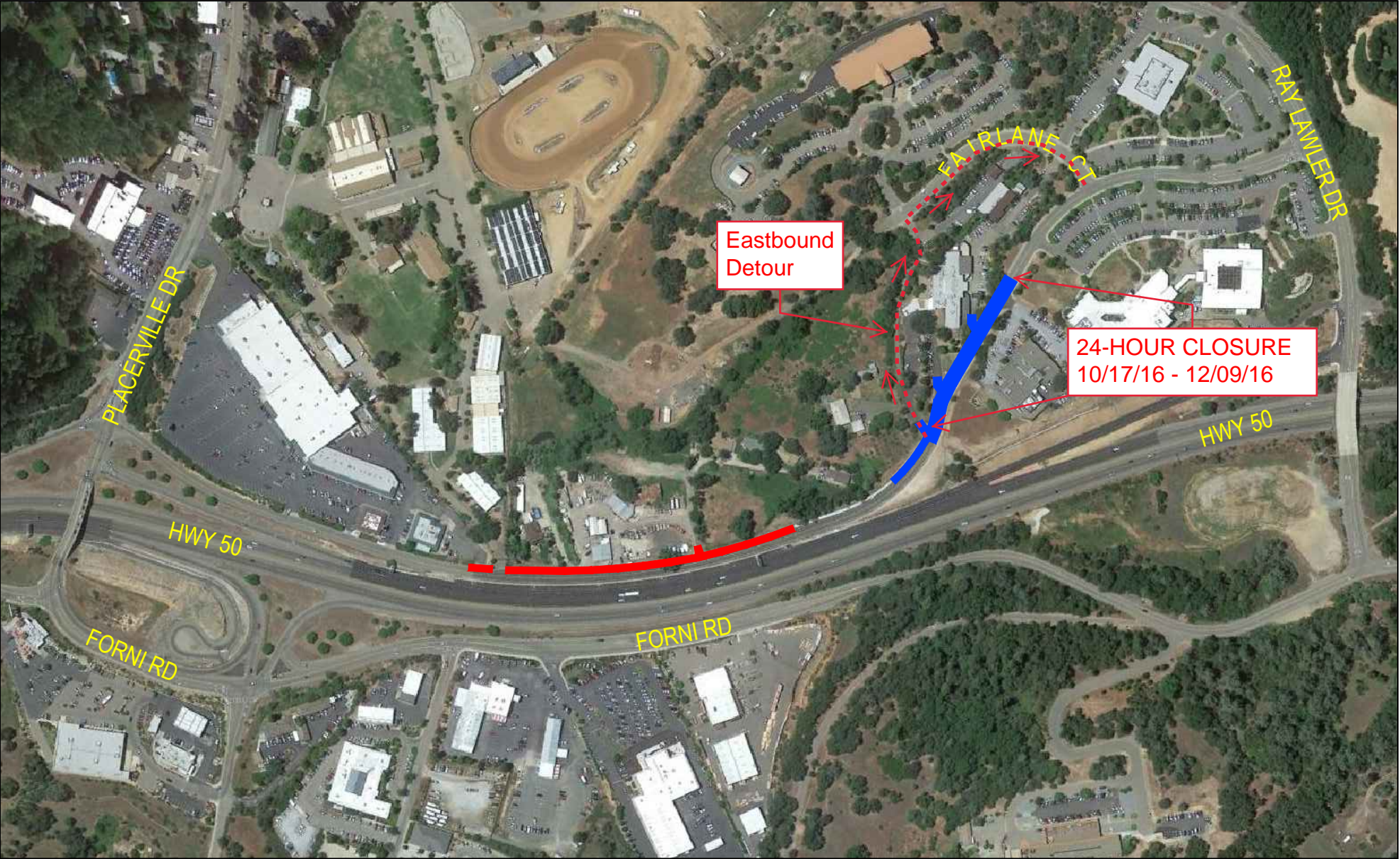
Jim Fisher, Resident Engineer	R.E.Y. Engineers	(916) 612-7581	jfisher@reyengineers.com
Gian Ramos, Inspector	R.E.Y. Engineers	(808) 341-8735	gramos@reyengineers.com
Rebecca Neves, City Engineer	City of Placerville	(530) 642-5250	rneves@cityofplacerville.org

*Please feel free to contact us directly with any questions or concerns*

*Thank you!*

# Western Placerville Interchanges Phase 1B

Site Map



## Legend

