

Zone 2A

City of Petaluma

Project Updates

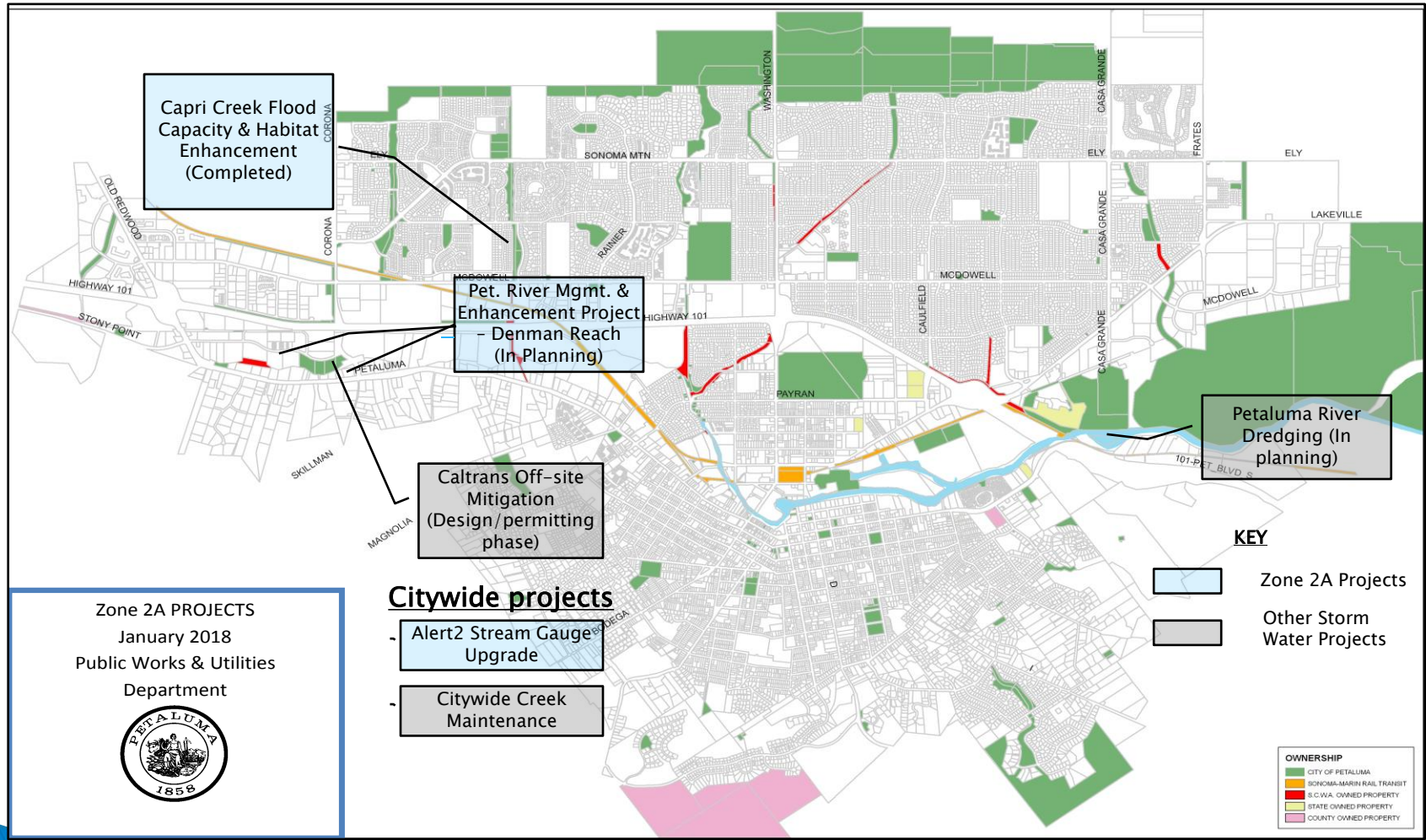
Public Works and Utilities Department

▶ Jason Beatty, P.E., Senior Civil Engineer

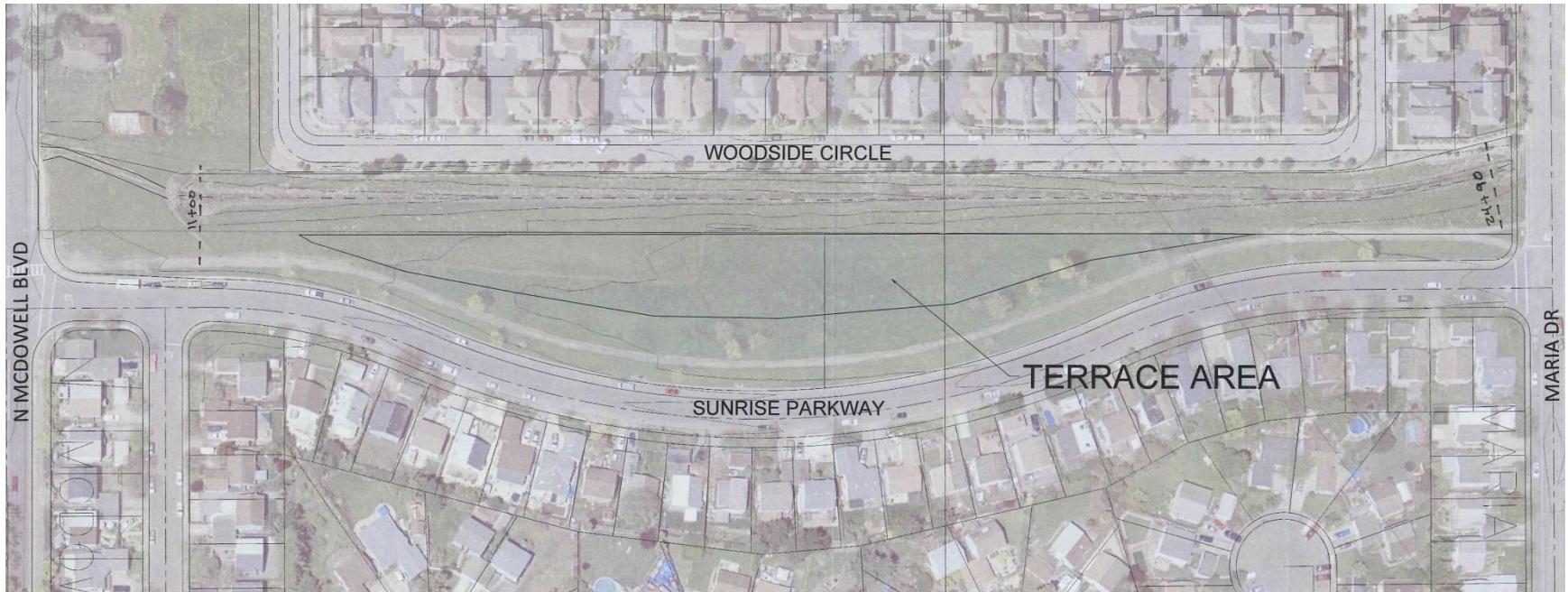
January 25, 2018



City of Petaluma Zone 2A



Capri Creek Flood Capacity and Habitat Enhancement (Nearly complete)



Capri Creek Flood Capacity and Habitat Enhancement (Nearly complete)

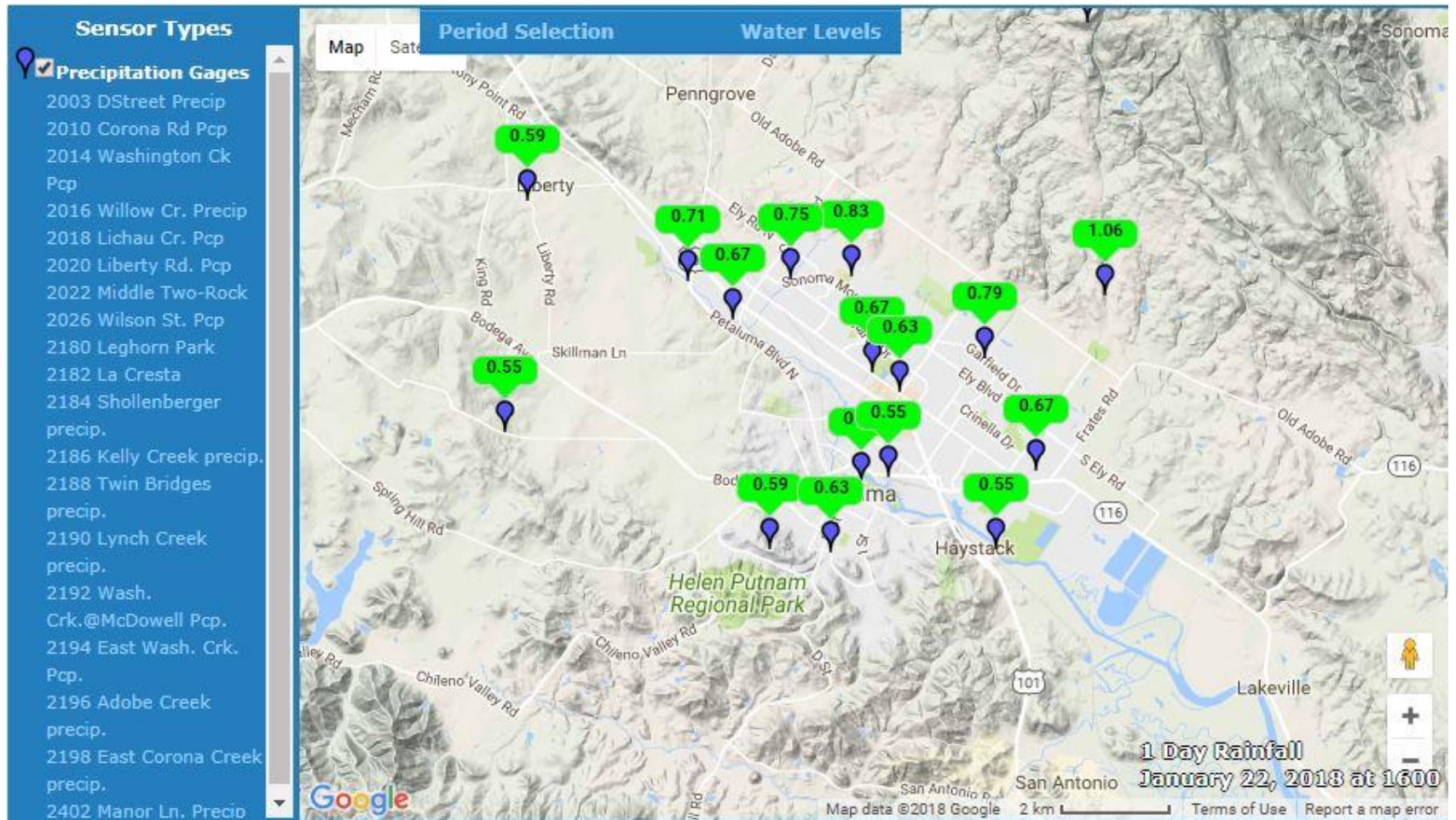


Before



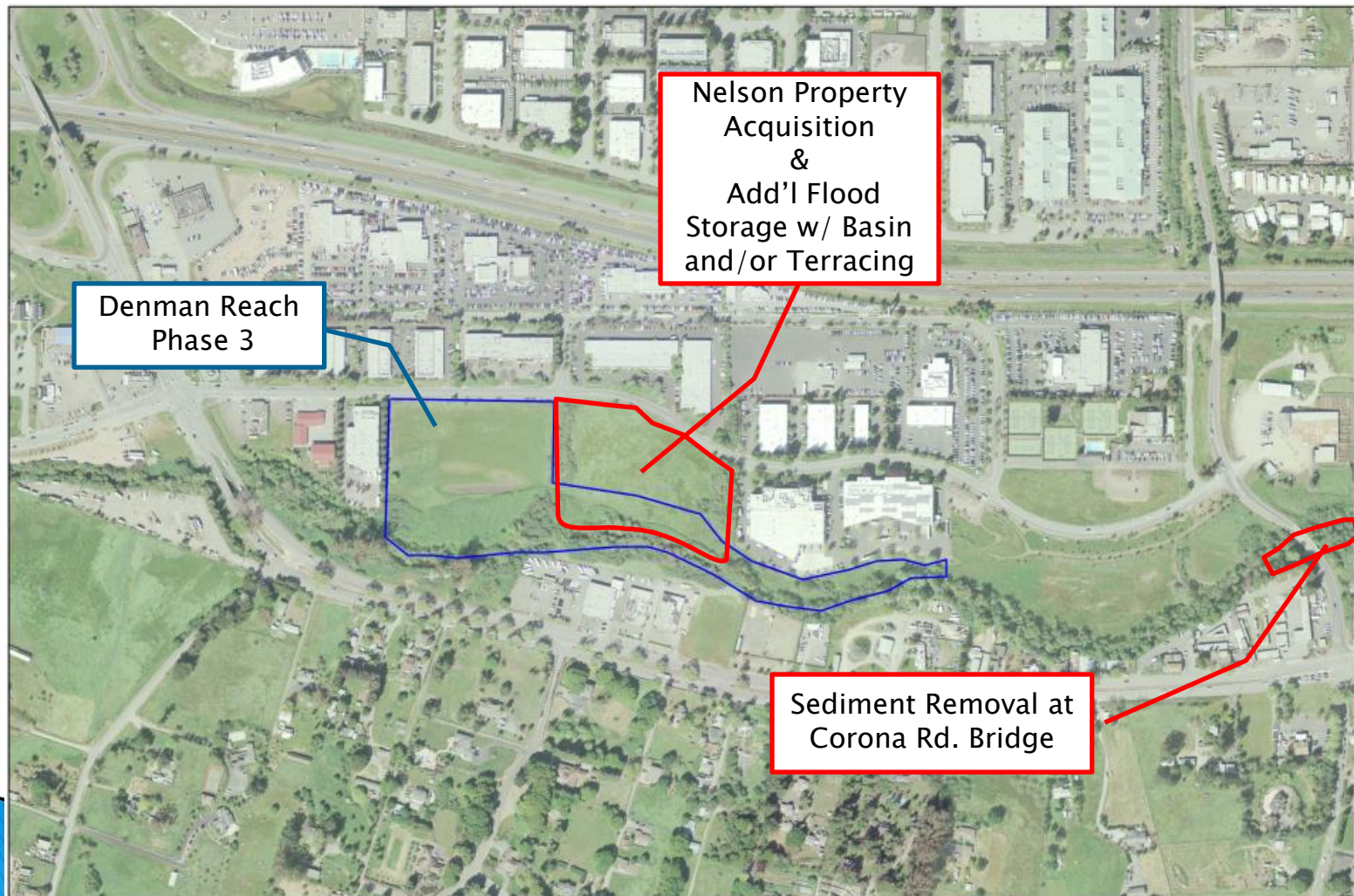
August 2,
2017

Alert 2 Stream Gauge Upgrade



www.cityofpetaluma.net/pubworks/raingauges.html

Petaluma River Flood Management Project – Denman Reach Phase 4 (in planning)



Sediment Build Up Corona Road Bridge



Area of Sediment removal

Petaluma River Flood Management Project – Denman Reach Phase 4 (in planning)

Next Steps

- ▶ Finalize Funding agreement– Feb 6th
- ▶ Complete hydraulic analysis of proposed mitigation measures (West)
- ▶ City to acquire Nelson Property
- ▶ Continue environmental permitting and CEQA update
- ▶ Begin design work
- ▶ Complete construction by of 2019.

Zone 2A Funded Projects

- ▶ Feasibility studies

Washington Creek Repair and Enhancement



*Washington Creek
along East Washington*



Corona Reach

Petaluma River (Corona Reach) Overflow Channel Flood storage



Kelly Creek

Kelly Creek at Sunnyslope Ave

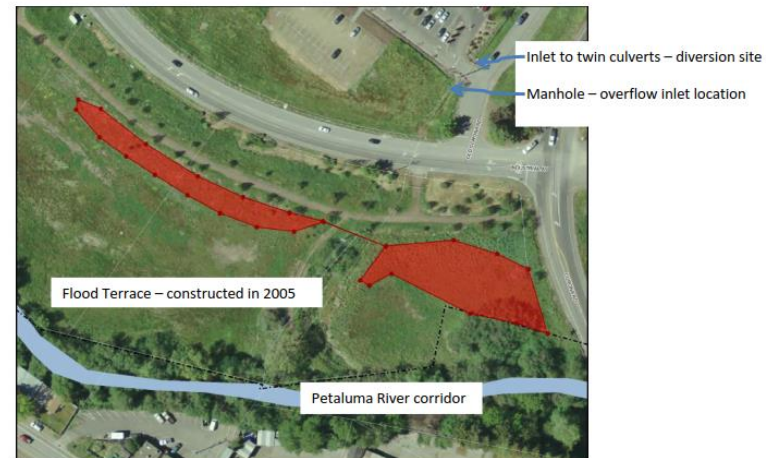
Other Petaluma Storm Water Projects

- ▶ Citywide Creek Maintenance
- ▶ Petaluma River Dredging
 - Project Partnership Agreement (PPA) Proposal sent to USACE, but on hold until PPA policy in place.
 - \$600k in USACE's 2017 Workplan for planning/permitting for dredging Petaluma River
 - Hydrographic survey of Marina and River completed
- ▶ Caltrans Off-Site Mitigation
 - Swale enhancements and bio-retention basin north of Corona Road
- ▶ Flood Model Possible Update
 - Flood mitigation projects; development; sea-level rise; 100 year storm surge event; roughness coefficients in channels; & non-dredged condition of river

Caltrans Off-Site Mitigation Project (in permitting/design)



Proposed Surface Flow Areas



Proposed Bio-retention basins

Questions?

