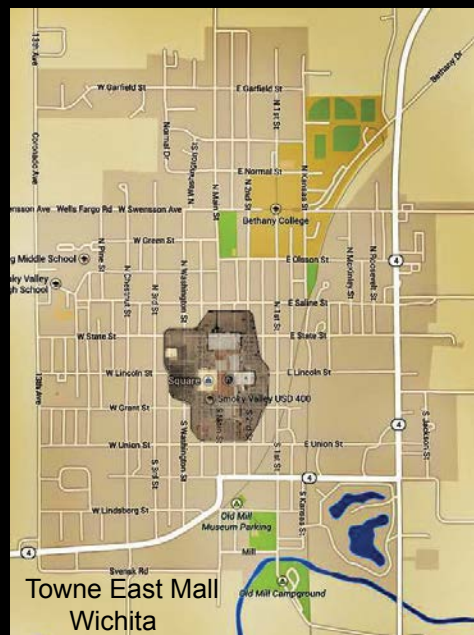




# Downtown Parking...

These two overlays show how the downtown business districts average walking distance compares with two regional shopping malls.



A parking problem may be indicative of GOOD things, like viable business, increased customer, visitor and tourist traffic, well-used or needed services, and a vibrant and active downtown.

extended definitions at [www.dictionary.com](http://www.dictionary.com)

# THE CITY OF LINDSBORG

## Get Connected with Lindsborg

Stay informed about: local news, events and services.



Follow us on twitter @CityLindsborgKS



"Like" us on Facebook [www.facebook.com/Lindsborg City](http://www.facebook.com/Lindsborg%20City)

Visit our City web page at [www.lindsborgcity.org](http://www.lindsborgcity.org)



## A FRIENDLY REMINDER

Please remember proper posting regulations in regards to garage sale signs. Thank you.

- \*\*Signs are NOT allowed in the Public Right of Way
- \*\*Signs are NOT to be attached to light or utility poles
- \*\*Signs MUST be located on premises of sale
- \*\*Please REMOVE all signs when the sale is over



## We R Kids Childcare Center



Once a year the children from We R Kids Childcare Center in Wichita visit Lindsborg. This year, Director Kevin Gorman, and his crew arrived the morning of the June 5th wind storm. They were eager to play at Viking Valley after a visit to Coronado Heights but offered to help carry limbs out of Swensson Park before they enjoyed the playground. What a great bunch of kids. The City of Lindsborg would like to thank them all for helping!



## Council Member Contact Information



Councilman **David Higbee** [dhigbee@lindsborgcity.org](mailto:dhigbee@lindsborgcity.org)  
Councilwoman **Becky Anderson** [banderson@lindsborgcity.org](mailto:banderson@lindsborgcity.org)



Councilman **Emile Gallant** [egallant@lindsborgcity.org](mailto:egallant@lindsborgcity.org)  
Councilwoman **Betty Nelson** [bnelson@lindsborgcity.org](mailto:bnelson@lindsborgcity.org)

Mayor **Bill Taylor**  
[btaylor@lindsborgcity.org](mailto:btaylor@lindsborgcity.org)

Councilman **Blaine Heble** [bheble@lindsborgcity.org](mailto:bheble@lindsborgcity.org)

Councilman **W.R. Chestnut** [wrchestnut@lindsborgcity.org](mailto:wrchestnut@lindsborgcity.org)

Councilman **Rick Martin** [rmartin@lindsborgcity.org](mailto:rmartin@lindsborgcity.org)

Councilwoman **Kelley Menke** [kmkenke@lindsborgcity.org](mailto:kmkenke@lindsborgcity.org)



# Downtown Parking continued...

## Downtown Parking Inventory

### 1st Tier - Within 1 Square Block of Main/Lincoln

#### Public

Downtown Diagonal (Main, Lincoln, Grant)	
100 N. Main West	31
100 N. Main East	26
100 S. Main West	22
100 S. Main East	29
100 E. and W. Lincoln	79
100 E. and W. Grant	18
	<hr/> 205

Main & Grant Parking Lot	33
City Hall Parking Lot	8
	<hr/> 41

Total Public Parking 246

#### Private

First Bank Kansas Combined Lots	36
Dollar General 2nd Street and Lot	36
Hemslöjd/Bank of Tescott	19
100 N. Lillegaten (Unimproved)	26
100 S. Lillegaten (Unimproved)	26
Peoples Bank Grant Street and Lot	16
	<hr/> 159

Total Private Parking 159

#### Other - Parallel Street Parking

Grant Street East and West	29
2nd Street North and South	28
State Street East and West	35
Washington Street North and South	31
	<hr/> 123

Total Other 123

Total 1st Tier Parking 528

#### 2nd Tier - Other Nearby & Potential Shared Sites

Soderstrom Parking Lot	35
Bethany Lutheran Church Parking Lot	72
Methodist Church Parking Lot	15
Covenant Church Parking Lot	40
Diagonal Parking on Lincoln - 2nd to Trail	33
Public Works/Public Safety	14
	<hr/> 209

Total 2nd Tier Parking 209

Total Parking 737

## City of Lindsborg

### 2014 Downtown Parking Map

Parking Zones
Public Parking Lot
Public Diagonal Street Parking
Public Parallel Street Parking
Private Parking Lot
Private Unimproved Lot
Other Parking



## -Parking should be equally available to everyone.

It is important to segment the parking motorists into different groups and prioritize them accordingly. Highest priority should be given to visitors, customers and shoppers because they represent the greatest benefit with the highest turnover and lowest costs. Residents come next because if our downtown is to remain truly a mixed-use neighborhood, then consideration must be given to factors of desirability with living in the area. Finally, it is reasonable to ask that employees and owners park the furthest, but that will likely be the hardest challenge of all.

In summary, before the City pursues the study of parking, acquisition of land for parking, or the construction of additional parking, we need to make better use of our existing spaces. First, we must develop a public information campaign to inform the public of the location of typically unused parking spaces. By working with our downtown businesses, we should encourage shared parking facilities for users that experience peak parking demands at different times. And finally, we need to get the message out by publicizing parking locations on websites, brochures, newspaper advertisements, and through individual downtown businesses to distribute information to visitors, tourists and customers.



# Vacant Property Registration

**T**he issue of vacant or abandoned buildings is an ongoing challenge for many cities, and Lindsborg is no exception with its own share of neglected structures. The Council has addressed the issue in a series of discussions, beginning with a study session in May, in an attempt to develop a policy aimed at returning vacant buildings to use. The focus has been to establish an ordinance that requires the owner of a vacant building to register the property and pay an annual fee for the right to keep it vacant.

Problems with vacant properties include vandalism, crime, safety, code enforcement, and especially devaluation of neighborhoods as a property declines from lack of use and/or regular maintenance. Not limited to commercial structures, empty and unused residential properties put pressure on the housing market, often forcing growth to fringe areas that are not necessarily served with infrastructure.

At the very least, registration gives the city the ability to track down an owner or resident agent, if and when violations occur, and to hold parties responsible when violations go unresolved for periods of time.

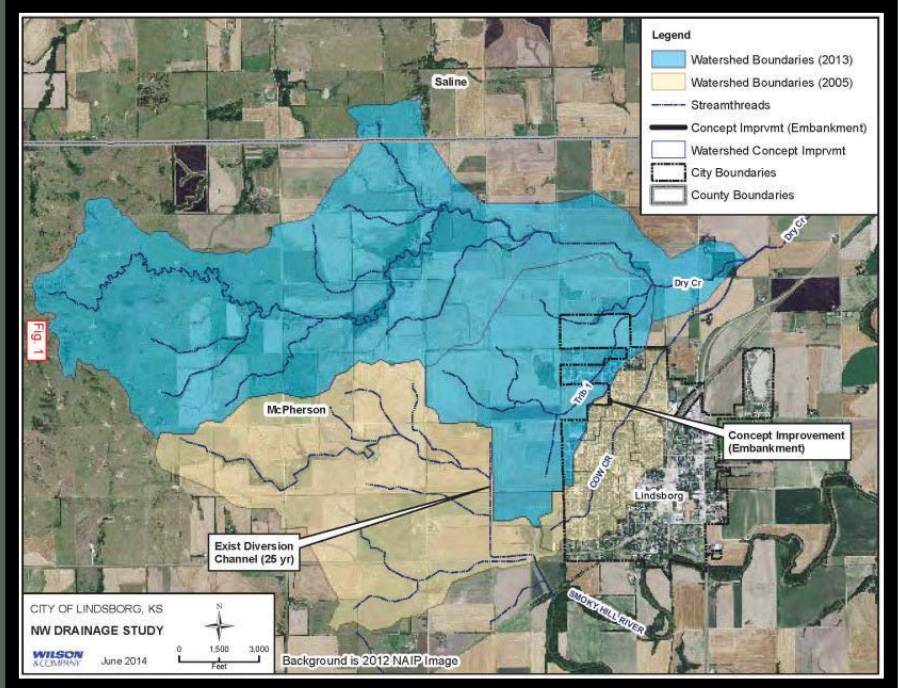
The draft ordinance under consideration requires registration after a building has been vacant for one year. Exceptions of an additional year may be granted for properties in probate, properties actively for sale or rent, or are under rehabilitation or construction. There is also discussion of publishing a neglected building list, to include photographs and owner information available in the public domain. The goal of the program is to encourage minimum standards in upkeep and maintenance, preserving value for vacant property and their owners, and to set the stage for responsible reinvestment and re-use.





# FLOOD STUDY UNDERWAY

A drainage study of the northwest portion of Lindsborg that flooded in July 2013 was approved by the City Council at their regular meeting on July 7, 2014. The study will include complete hydrologic and hydraulic analysis of the watershed basin in this area and provide improved mapping of the floodplain. Wilson & Company, Salina, started the study in mid-July and will present their findings to the City by the end of the year. Wilson will conduct a field survey to verify ground surface elevation data, and then perform hydraulic modeling for 25-year and 100-year storm events. The analysis will provide an opportunity to estimate the return frequency for an event similar to last year's devastating flood.



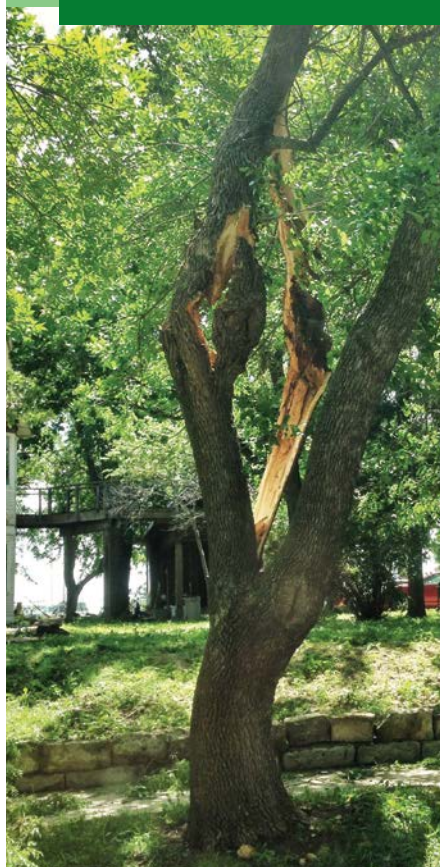
## *Design Standards Proposed for Harrison Cole*

Enhancing the curb appeal of Harrison Cole was a topic at the July 7, 2014 Council Study Session. Serving as the “front door to Lindsborg,” the mile-long corridor is often the first impression that visitors have of the community. The zoning code is under review to find ways to encourage and develop a positive first impression.

Design standards are already in place for the downtown business district. There, any modification to the exterior appearance of a building or structure must be approved by Design Review Board, a 5-member committee appointed by the mayor. The Board reviews plans submitted by owners to ensure that modifications are in harmony with the surrounding properties, and contribute to the “historic, economic, social and cultural wellbeing and development of the community.” A proposal for the highway business district is not as lofty, instead more of an effort to improve aesthetic appeal and visual enhancement. Targeted towards new construction and renovations, the extended review process will require not only the support of the Planning Commission and City Council, but residents and business owners as well.

Public input will be needed before any new standards are established. An ad hoc committee could be formed by the mayor, and public hearings may also be planned as the process develops.

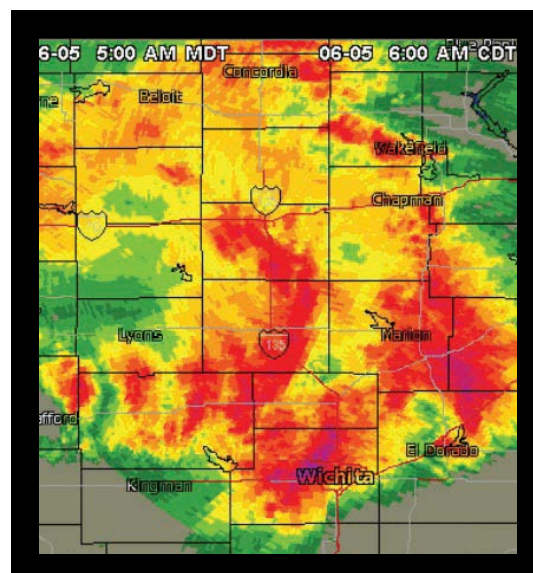
# June Storm Downs Trees



An unusual early morning storm caused extensive tree damage on June 5. Lindsborg residents woke up to a difficult commute, as wind gusts in excess of 80 mph swept through the community, trailing a large thunderstorm that was receding to the southeast. At 6:00 a.m., just as the rain had stopped and storm clouds began to lift, the wind began to surge from the northwest. Entire trees were uprooted, and large broken branches brought down street light lines, now hidden by the debris. Many streets were impassable, but with the help of many local residents, limbs were pulled to the curb to allow a single lane of traffic. By 10:00 a.m. most streets were cleared, but some were still blocked waiting for electric crews to repair downed power lines. There were no reports of injuries, but Lindsborg's treescape suffered damages in excess of the 2007 ice storm.

Work began immediately and continued through the days and weeks after the storm, as city workers, tree trimmers and anyone with a chainsaw and a truck removed countless branches, cut up toppled trees, then hauled material to the boneyard. The City has a policy of removing tree debris after a major storm if piled next to the street in a timely manner. It took the Streets Department many days to clear the curbs. One streets worker made over 100 trips to the boneyard in the first week.

Since the clean-up, the challenge faced by the Lindsborg Tree Board and Parks Department has been the identification and removal of conditions created by "hazard trees." A hazard tree is one with a structural defect that is within striking distance of people or property. Hazard trees can cause property damage, personal injury or fatality in the event of a failure. Many defects are clearly visible, like "hangers" or broken limbs that are caught in the canopy of the tree. Hangers are easily identified as the leaves begin to wilt. They often blow down in subsequent windstorms, but sometimes remain stuck for months or years. Some defects, like cracks or hollows, are difficult to find, and often require professional examination to determine their probability of failure. Any residents with questions about specific tree concerns are encouraged to contact City Hall to report the problem. A Parks employee or Tree Board member will make a site visit and provide an assessment of the potential danger.



Radar Image at 6:00 a.m. on June 5

## Tree Damage and Insurance Claims

It doesn't matter if the tree or branch that caused the damage is on your property or your neighbor's. The homeowner with damage will file a claim with their insurance company. In some cases, the policyholder's insurance company may try to collect from the other party's insurance. This happens if it can be established that the neighbor's tree that caused the damage was in poor health or poorly maintained.

## Dangerous Trees and the Municipal Code

Code Section 48-139 establishes regulations for dangerous, dead or diseased trees in the city. "Duty of property owner to remove... The owner shall remove all dead, diseased or dangerous trees, or broken or decayed limbs that constitute a menace to public safety." Upon written notification by the city, owners have 30 days to remove hazards. Failure to comply results in the city's removal with cost charged to the owner. If unpaid, the cost is filed as a property tax lien.





# Water CONSERVATION

**W**ater is a precious resource and limited in quantity. Therefore, the City of Lindsborg encourages wise and responsible water use. A voluntary lawn watering conservation plan is always in effect. Those homes with even-numbered addresses are asked to water their lawns and gardens on even-numbered days. Those homes with odd-numbered addresses are asked to water their lawns and gardens on odd numbered days. Following are other tips to conserve water around your home.

## LAWN & GARDEN

**\*\*Water when temperatures are the coolest.** Early morning watering reduces evaporation loss and minimizes disease problems.

**\*\*Water slow and deep.** Apply slowly to avoid runoff especially on slopes and put on enough to penetrate deeply. Less frequent, but thorough watering saves water and is better for the lawn or garden.

**\*\*Aim the sprinkler.** Take time to adjust the sprinkler to avoid excessive watering of walks, drives and streets.

**\*\*Avoid too much fine mist.** Water is lost to the wind and evaporation when droplets are too small. Change to a larger orifice and reduce operating pressure.

**\*\*Don't apply too much water.** Too much water may damage plants and wastes water. Measure water application rate with a can and timer. Use a timer to remind you to move or shut off the water.

**\*\*Don't cut grass too short.** Taller grass shades the soil, thus, reducing temperature and evaporation and is better for the grass.

**\*\*Water only when needed.** A pre-set fixed schedule is a poor way to water. Water use and rainfall affect the need for water and application should be adjusted accordingly. If it rains or is cool and cloudy, delay or eliminate the watering.

## FLOWERS, SHRUBS AND GARDENS

**\*\*Mulch flowers, shrubs and gardens.** Mulch reduces evaporation losses and helps control weeds.

**\*\*Use low or no-water landscape.** In arid or semi-arid areas, plantings should be adapted to the climate would require little or no water.

**\*\*Use innovation irrigation.** Trickle and drip irrigation allow water to be directed where it is needed and are well suited to shrubbery and trees. Well placed emitters water slowly and deeply next to plants and reduce weeds that thrive with full cover irrigation.

**\*\*Direct runoff away from the house.** Drainage from down spouts and surface runoff should be directed away from the house where it can be used by shrubbery or shelter belts. Additionally, drainage away from the house will protect the foundation and help keep water out of the basement.

## Leaks Waste More Than People Realize

Leak Rate	Gal/Day	Gal/Month
1 Drop/Sec	7	210
Steady Drip	20	600
Small Trickle 1/32"	200	6000

\*\*Information from the Cooperative Extension Service, Kansas State University



Denny Walker and Lynn Johnson work on the North Main water main. It has been a big project for the Water Department this summer.





## Front Porch Friday

Equals

# SUCCESS

Come one, come all and bring those water guns! This was the theme of the first Front Porch Friday event that was held in Swensson Park on May 30, 2014.

This idea came from the Lindsborg Round-table Group to keep the community involved. It was a great event!



Photos on this page were provided by Jim Richardson

This event featured an old-fashioned water fight and everything lemon. Lemon bars, lemon pie, and lemon cake, were a few of the treats that were available and set up in the "dry zone." More than 200 children and adults participated in this event. Everyone appreciated the involvement of the Volunteer Lindsborg Fire Department. The main idea behind FPF is to gather neighbors, engage newcomers and generate new connections to strengthen Lindsborg. Contact the CVB for FPF details.



# LINDSBORG

Where you want to have FUN!

"LINDSBORG, in McPherson County, was settled by Swedes and was so well publicized in Sweden that many Swedes knew it was a famous American city. Kenneth Davis, in his bicentennial history, Kansas (1976), tells the story of a "Kansas-bound Swede who, landing in New York City, was overwhelmed by the hugeness and richness of the metropolis. 'If this is New York,' cried he in his native tongue, 'what must LINDSBORG be like!'"

Most of the people in Lindsborg have heard this often told story and laugh at the naiveté of the quoted immigrant. As the descendants of these Scandinavian travelers and as Kansans, we like our towns small and our in-between spaces vast. Small though is just a scale in Lindsborg. We live large in terms of prosperity, quality of life, opportunity and a sense of joy. We admittedly love to have fun! The proof we love to laugh is cemented in the volunteer hours we spend planning Swedish festivals, American pioneer festivals, Kubb tournaments, Art festivals, Street Dances, simple seed spitting contests, a whole day every year celebrating the humble waffle (while dressed in waffle costumes), live theatre productions/comic murder mysteries and community water gun fights! Lindsborgians see fun and humor in the mundane and in the extraordinary. We refuse to be ordinary. This is apparent when travelers pop into the CVB office and say, "Everyone here is so friendly! Everyone waves and smiles!" Perhaps it is unusual...to be so genuinely happy. Time and time again, tourists are amazed at our way of life. Lindsborg is a happy, funny place. We laugh loud, often and well. We plan to keep it that way!



Midsummer's Festival June 21, 2014 was a time of laughter, dancing, and fun!



CVB Director, Holly Lofton, relays the history of Coronado Heights to a group of very interested first graders from Wichita.



# PROTECT AND SERVE

Officer Jay Rector is the newest member to join the Lindsborg Police Department beginning in April of 2014. Gaining knowledge and experience on a small-town scale is important to Officer Rector and with nearly four years of law enforcement under his belt, he is eager to keep this small-knit community safe. "It is refreshing to be in law enforcement where the citizens want to talk to the police and enjoy talking with the police," he said. His previous employment includes over three years serving on the Granview Plaza, KS Police Department and approximately ten years in the military. Posing with Officer Rector is the new Dodge Charger police cruiser.



Members of the Lindsborg Roundtable Group present a gift to the firefighters in appreciation for all of their help at the first Front Porch Friday event on May 30, 2014.

The firefighters set up a water "refill station" for the water fight. They also stayed the duration of the evening and sprayed everyone who participated in the water fight.

It was an enjoyable event that gained national coverage for a great community just coming together and having a little bit of old-fashioned fun!



John Peterson retired from the Lindsborg Fire Department after 27 years of service! Thanks John!





# LINDSBORG GOLF COURSE

Where you want to...PLAY



1541 Svensk Road, Lindsborg, KS - 785.227.2244

Lindsborg Golf Course Superintendent, Darrin Dohrman, poses with the new golf carts that are now available to rent at the course. The new carts were delivered just in time for the inaugural Midsummer's Classic Tournament which was held June 21. For this tournament being the first coordinated by the Midsummer's Committee, LGC and the Sundstrom Conference Center it was a huge success. There were a total of 14 teams that participated. The overall turnout was great and everyone had a good time. LGC is open daily and specials are offered on Mondays and Wednesdays. Men's League Night is Tuesday, Women's League Night is on Thursday and Couples League Night is on Friday. Head out and play a few rounds!

## RECREATION



It is almost that time of year again. Put on your running shoes! Would you be interested in leading the pack? Call LRD at 785-227-3333 for more information! The 12 week program will begin September 1st and go through November 21st. Monday and Wednesdays 6:30 PM to 7:30 PM or Tuesday and Thursdays 5:30 AM to 6:30 AM. The program is \$60 per person and includes the entry fee and t-shirt for the Turkey Trot. The Turkey Trot will be held November 22, 2014.

TO

5K



### \*YOUTH BASKETBALL\*



- \*Registration open to 1st - 6th graders
- \*Participation fee: \$30 for students who reside with-in Lindsborg city limits & \$35 for those who reside outside Lindsborg city limits
- \*Please register by October 24th



### \*\*Turkey Trot\*\*

\*\*Saturday, November 22, 2014

\*\*8:00 AM on the south side of the pool

\*\*Registration is \$20 which includes a t-shirt

\*\*Prizes will be awarded to the first male winner and the first female winner





The City of Lindsborg  
101 S. Main  
PO Box 70  
Lindsborg, KS 67456

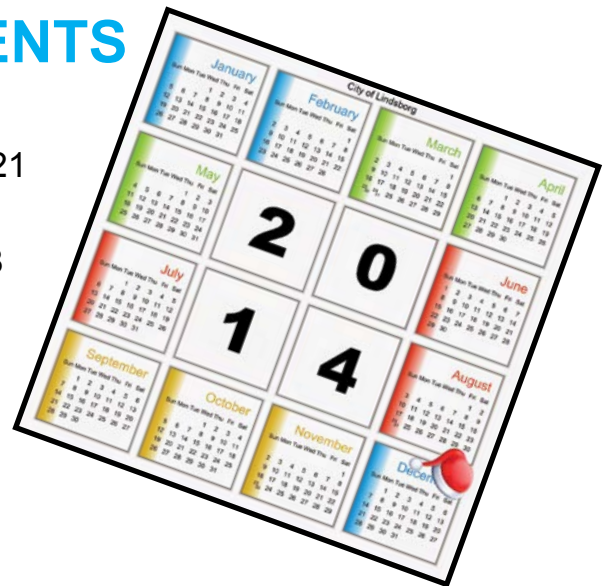
PRSRRT STD  
US POSTAGE  
PAID  
LINDSBORG, KS  
PERMIT #1

ECRWSS

Local  
Postal Customer

## CALENDAR OF EVENTS

City Council Meetings -- Sept. 2, Oct. 6, Nov. 3  
Planning & Zoning Commission Meeting -- Aug. 19 & Oct. 21  
Annual Street Dance -- Aug. 23  
Discover Your Swedish Roots (Vision\_Tek) -- Sept. 27 & 28  
Coronado Heights Run -- Oct. 11  
Falun Classic 34 Mile Bike Ride -- Oct. 12  
Turkey Trot -- Nov. 22  
City Offices will be closed -- Nov. 11  
City View Newsletter -- Issue 32 (mid-Nov.)  
Recycling Center -- (Open 24/7) Be considerate please



For more scheduled events please view the calendars at [www.visitlindsborg.com](http://www.visitlindsborg.com) and [www.lindsborgcity.org](http://www.lindsborgcity.org)

## EMERGENCY INFORMATION

Police, Fire and Ambulance:	911
Police, Fire and Ambulance:	785.227.2988 (non-emergency)
Water, Sewer, Electric, Streets:	785.227.3428
Water Sewer, Electric, Streets:	785.227.3469 (after hours, weekends and holidays)