



# The Lindsborg City View

THE CITY OF LINDSBORG

Volume 6, Issue 1

May 2008



## NEW Trash Carts Arriving Mid-Summer

The McPherson Area Solid Waste Utility will be replacing all of Lindsborg's residential carts. These new carts will allow the utility to pick up carts much more safely and efficiently with a fully-automated trash truck. A fully-automated trash truck requires only one truck operator who can pick up the trash without getting out of the truck. The utility has already been using these trucks in other McPherson County cities with great success.

The utility will mail Lindsborg residents a letter

and brochure on how the transition to the new carts will occur and how to place the new carts at the curb. Once you have received the letter please feel free to contact the utility with any questions.



**NEW  
POLYCART**

### Highlights:

- POLYCARTS
- CITY 411
- FLOOD INSURANCE
- OPPORTUNITIES & UPDATES
- CALENDAR INFORMATION
- CONTACT INFORMATION

## Community Development Director

The City of Lindsborg welcomes Gary Shogren as Community Development Director. The new position and job title is an attempt to reflect the need to promote strategies for community-wide growth and advancement. Rather than focusing only on commercial and industrial development in Lindsborg, the position also requires planning for long-range housing growth consistent with the image and direction of the community.

Lindsborg is a city rich with tradition in education, the arts, culture and history. Progress must be consistent

with these key themes, involving an understanding of the relationships between community partners like USD 400, Bethany College, Lindsborg Hospital, and others. It requires working effectively with civic and grassroots organizations, representatives from business, and individuals from a variety of backgrounds.

Gary will also take an active role in planning and zoning issues, recognizing the importance of implementing the City's Comprehensive Plan, and analyzing policy issues in order to make

recommendations to City Council.

Välkommen Gary!  
City Staff



**Gary Shogren**

### Inside this issue:

CITY HALL	2
COMMUNITY HAPPENINGS	4
WATER CONSERVATION	5
PUBLIC SAFETY	7
PUBLIC WORKS	9
PARKS & REC	10
CALENDAR & CONTACTS	12



# The Lindsborg City View

## SVCF Heritage Fund



**“One’s destination is never a place but rather a new way of looking at things”**

*Henry Miller  
(US Author 1891-1980)*

Smoky Valley Community Foundation (SVCF) is proud to announce a new field of interest fund. The City of Lindsborg has partnered with the SVCF to establish a Heritage Fund that will support the work of the local community in enhancing, strengthening and promoting the heritage of the Smoky Valley. This new fund will provide additional grant dollars to the community.

Mayor Judy Neuschafer stated, “The City of Lindsborg is excited to be the founding donor of the Heritage Fund. It is with pride that we honor the early settlers of the Smoky Valley by the establishment of this fund that will enhance and promote the heritage of the community for today and to future generations.”

**City Officials present Heritage Fund check to Barry McMillan & Leon Burch**

“The Smoky Valley Community Foundation is proud to establish The Heritage Fund with the assistance, partnership and commitment of the city of Lindsborg,” said Leon Burch, Executive Director of the Foundation. “The action of our elected city officials in establishing the fund makes a strong statement about the importance of special events and activities that carry the traditions of the Smoky Valley. The Heritage Fund demonstrates a community commitment that will assist and assure that event organizers will have continued financial support as they continue to enhance and celebrate our heritage, present and future,” continued Burch.

Applications for the Heritage Fund will be considered from non-profit organizations, individuals and groups of individuals that have charitable projects related to heritage. Grants are available to projects that fall within the greater Lindsborg area. For-profit organizations will not be considered as grant recipients, and applications will not be accepted outside of cycle.

**To learn more about the Heritage Fund contact: Leon Burch at 227-3460 or visit the Smoky Valley Community Foundation website at: [www.smokyvalleycf.org](http://www.smokyvalleycf.org)**



## Välkommen Students

**Mayor Neuschafer & City Staff welcomed Dr. Werner Mohr and students from Germany. The group received certificates on March 27, 2008 commemorating their visit and tour to Little Sweden U.S.A.**



[www.lindsborgcity.org](http://www.lindsborgcity.org)

## Convention & Visitors Bureau - Sells Lindsborg

The Lindsborg Convention & Visitors Bureau has been hard at work for the last year. This group of individuals has given unselfishly of their time to establish the Lindsborg Visitors Center. It is under the guidance of these volunteers that we have set goals, adopted a marketing plan and hired staff.

This same group of individuals has provided input towards establishing a Lindsborg resource manual. The present twenty two page e-file is a wonderful listing of lodging accommodations, dining options, caterers, rental locations, trip itineraries and special services among other community assets. Ideally this manual will be placed on line selling the community 24/7. Look for it on the web at [www.lindsborg.org](http://www.lindsborg.org).

The above website also has links to the wide variety of community festivals that Lindsborg is known for. We are constantly checking the site for event approvals and updates. There exists a partnership between local festival organizers and the CVB at promoting attendance for these events. We applaud the hard work of those organizations, and their efforts at keeping their websites current.

While exploring the web, you might want to check out the multiple listing sights for upcoming activities. CVB Staff has done their best to

update listings for Lindsborg on the following free sights: Travel Kansas, Kansas Traveler, Kansas Country Living, High Plains Journal, Salina Arts Calendar, LASR (Leisure And Sports Recreation) and the Wichita Times. We are always anxious to learn about new listing opportunities. Let us know if you come across a site that we have yet to discover.

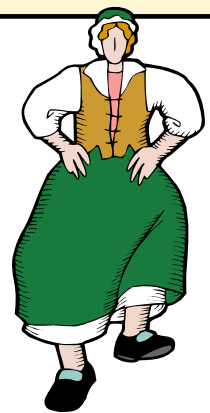
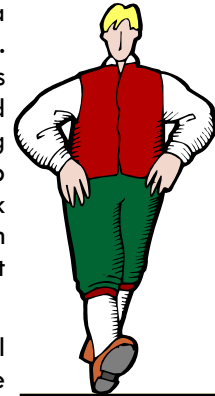
The CVB has put a fresh face on the community at a variety of exhibit opportunities across the state. CVB Representatives manned a booth at the annual dinner for the Amazing 100 Miles in December, were in attendance at the Kansas Association of Society Executives Conference in Topeka in December, the Wichita Flower & Garden Show in March, the Great Escapes Expo at Fort Riley in March and the Kansas Sampler Festival in Concordia during the first weekend of May. We have also forwarded our registration to be a part of the exhibits at the Kansas State Fair in Hutchinson in September.

Are we tracking the guests at these events? Some of the event organizers have provided registrants with lists of attendees. We have also used entry forms to track those same people in an effort to turn them into visitors for Lindsborg. At the Great Escapes Expo, we

encountered a gentleman in charge of booking trips for a chain of bank travelers. Ironically enough, he was an exhibitor himself and understood that Lindsborg has an appeal as a trip destination. We were quick to follow up with an information packet the next Monday morning.

It sounds like a lot of travel expense and time out of the office. Most of these exhibit opportunities have been within an easy drive of Lindsborg, much like what it would take for that same audience to travel to us. Our marketing study recommends targeting our promotional efforts within a 150 mile radius of Lindsborg. With the present economic downturn and the cost of gasoline on the rise, that radius seems to be a very practical approach. We are not to assume that this market is aware of what the community has to offer. To those residents new to the area or emerging boomer travel budgets, we cannot take for granted that our potential visitors know about Lindsborg. Our challenge is to educate those potential travelers of what there is to do in Little Sweden USA.

The community has also received some great **FREE** press throughout the year. The CVB has contributed articles to travel writers for Midwest Living Magazine, Kansas Magazine and the High Plains Journal.



(continued on page 4)





# The Lindsborg City View

## CVB Selling Lindsborg

*(feature story from page 3)*

In addition, Frank Reese of the Good Shepherd Turkey Farm has had some great press in the Wall Street Journal and New York Times. The Stockholm Restaurant was recently highlighted in the Wichita Dining Guide. Kansas Magazine also ran a story on Swedish foods in Lindsborg that featured the Courtyard Bakery, the Swedish Emporium, and the Taste of Lindsborg. We also cannot forget the national exposure we receive from Jim Richardson's photography.

and have exhibited as partners with Salina and Rolling Hills Zoo at the Kansas Sampler.

By connecting the dots on possible tour itineraries with sites along specific routes we can build our visitorship through these regional partners. We are also very excited to see that Lindsborg is among sites listed on the Prairie Trail Scenic By-way, a designation made through the Kansas Department of Transportation. A formal ribbon cutting to open the trail is set for 9:00 a.m. on May 17 in Canton.

We have done our best to build our regional partnerships. The Lindsborg CVB maintains a membership in the South Central Kansas Tourism Region, the North Central Tourism Region, the Amazing 100 Miles, WeKan,

Our best partnership of all is that with the Lindsborg News-Record and supporting business advertisers. The Lindsborg News-Record publishes between 30,000 and 35,000 Destination

Lindsborg issues twice a year. It reaches 2,450 individuals through News-Record subscribers. The LNR also distributes the publication at their expense to 470 locations in 67 Kansas cities. The Destination Lindsborg is included in every packet that comes out of the CVB office, sometimes two or three a day and other days by the dozen. This publication works for us everyday of the year at recruiting new faces to Lindsborg.

I hope this gives you an idea of the scope that your CVB Staff gives towards promoting the community. We accept the challenge of new opportunities coming our way each day. We certainly appreciate the help that the entire community is telling the Lindsborg story and believe we have every right to be proud! **Stay tuned...**

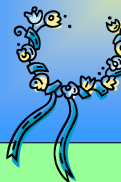


### JULY 4th Celebration

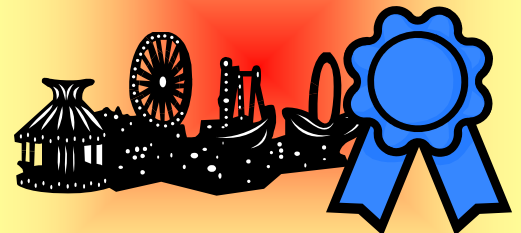
#### Swensson Park Bandshell



### Midsummer's Day June 21, 2008



### Broadway RFD STATE FAIR



### July 18, 19, 25, 26

[www.lindsborgcity.org](http://www.lindsborgcity.org)



## WATER Conservation

Water is a precious resource and limited in quantity. Therefore, the City of Lindsborg encourages wise and responsible water use. A voluntary lawn watering conservation plan is always in effect. Those homes with even-numbered addresses are asked to water their lawns and gardens on even-numbered days. Those homes with odd-numbered addresses are asked to water their lawns and gardens on odd-numbered days. Following are other tips to conserve water around your home.

### LAWN & GARDEN

**Water when it is coolest.** Early morning watering reduces evaporation losses and minimizes disease problems.

**Water slow and deep.** Apply slowly to avoid runoff especially on slopes and put on enough to penetrate deeply. Less frequent, but thorough watering saves water and is better for the lawn or garden.

**Aim the sprinkler.** Take time to adjust the sprinkler to avoid excessive watering of walks, drives and streets.

**Avoid too much fine mist.** Water is lost to the wind and evaporation when droplets are too small. Change to a larger orifice and reduce operating pressure.

**Don't apply too much water.** Too much water may damage plants and it wastes water. Measure water application rate with a can and timer. Use a timer to remind you to move or shut off the water.

**Don't cut grass too short.** Taller grass shades the soil, thus, reducing temperature and evaporation and is better for the grass.

**Water only when needed.** A pre-set fixed schedule is a poor way to water. Water use and rainfall affect the need for water and application should be adjusted accordingly. If it rains or is cool and cloudy, delay or eliminate the watering.

### FLOWERS, SHRUBS & GARDENS

**Mulch flowers, shrubs and gardens.** Mulch reduces evaporation losses and helps control weeds.

**Use low or no-water landscape.** In arid or semi-arid areas, plantings should be adapted to the climate and would require little or no water.

**Use innovation irrigation.** Trickle and drip irrigation allow water to be directed where it is needed and are well suited to shrubbery and trees. Well placed emitters water slowly and deeply next to plants and reduce weeds that thrive with full cover irrigation.

**Direct runoff away from the house.** Drainage from down spouts and surface runoff should be directed away from the house where it can be used by shrubbery or shelter belts. Additionally, drainage away from the house will protect the foundation and help keep water out of the basement.

### Leaks Waste More Than People Realize

Leak Rate	Gallon/Day	Gallon/Month
1 Drop/Sec	7	210
Steady Drip	20	600
Small Trickle 1/32"	200	6000

\*Information from the Cooperative Extension Service, Kansas State University, Manhattan, Kansas.





# The Lindsborg City View



## National FLOOD Insurance Program

All community property owners and renters are eligible for flood insurance, not just those that live in flood prone areas. Lindsborg participates in the National Flood Insurance Program and policies can cover a single-family residence for \$250,000 against flood damage. If FEMA flood maps show that a property is in a Special Flood Hazard Area (SFHA), flood insurance is required by law.

**For information on FEMA flood maps or to inquire if a property or building is in a SFHA, contact City Hall at 785-227-3355.**

Throughout the City, the land is relatively flat and storm water runoff is extremely slow. When the ground becomes saturated and heavy rains continue flooding sometimes results. Local flooding comes from the Smoky Hill River and Cow Creek. The last major flood event occurred locally in June 1993.

A **"Flood Watch"** means flooding is possible. A **"Flash Flood Watch"** means a flash flood can occur with little warning. **"Flood Warning"** means a flood is occurring or will occur soon. **"Flash Flood Warning"** means a flash flood is occurring or will happen very soon; take immediate precaution. Stay tuned to local radio (KNGI 1450 AM, KBBE 96.7 FM) and television stations (Channels 3, 4, 10, and 12)

for information and instructions. A portable radio should be available in the event of electrical power outage.

### Flood Safety Notes:

- Stay alert to weather bulletins that warn of flash flooding.
- Do not walk or drive through flowing water.
- Even standing water can float a building, collapse basement walls, or buckle a concrete floor.
- Clean everything that got wet. Floods carry mud, chemicals and other noxious substances that cause health hazards. When in doubt, throw them out.

There are preventive measures that can be taken to minimize or eliminate potential flood damage to buildings. Sandbags, plywood, plastic sheeting, and lumber can be used to temporarily protect property. Moving furniture and other possessions to higher floors, if available, can reduce contents losses. Permanent flood proofing measures for flood prone areas are preferable to temporary ones.

**Contact the Lindsborg Community Library at 111 S. Main for publications on retrofitting, as well as flood insurance, flood protection, and floodplain management.**

Any development in the SFHA requires a permit. You must obtain a permit before you build, alter, regrade or fill on your property.

**Contact the Public Works Director at 785-227-3428 for building code and permit requirements.**

The Department of Public Works has a drainage system maintenance program. Major drainage channels, ditches and structures are periodically checked and maintained so that stoppage is minimized and systems are allowed to flow freely. Citizens can assist in this effort by keeping catch basins and drainage ditches on their property free of debris.

Floodplains can be a valuable resource for the city. Left open, they provide storage for floodwaters to minimize flood damage. They also furnish habitat for plants and wildlife, and can filter pollutants from storm water, improving water quality. Improper disposal of waste, such as oil, paint, fertilizer and pesticides, will pollute the storm water and destroy plants, endanger wildlife and affect drinking water. Properly store and dispose of hazardous chemicals. Never dump them into any storm drain or drainage canal.



**"There are no shortcuts to any place worth going"**

*Beverly Sills*



## EMT Class

Every year the City of Lindsborg looks into hosting an EMT Class through Hutchinson Community College. The course is rather lengthy and requires some dedication to complete. Students currently meet two nights a week from 6pm to 10pm. They also participate in additional "lab" nights and are required to work with a paramedic based ambulance service as well as staff in a Hospital emergency room.

As our volunteer numbers decreased, the City believed hosting classes would make it convenient for local citizens to attend, and perhaps increase the number of citizens who become volunteers. There is no question that individuals who volunteer for ambulance service receive a lot of self gratification. The City offsets their time and efforts by providing a point system that supplements them financially. One EMT member shared; "You certainly don't get rich

doing this type of work, but it's rewarding from the standpoint of helping others."

Our class sizes vary depending on the number from Lindsborg and other communities who make the trip to Lindsborg. Marquette attempts to have someone attend classes every year to help boost their numbers. No matter what the numbers are, by adding two or more people every year to our EMT service we are gradually building a solid base of volunteer ambulance members. What is important about a good base of people is that it allows current members a break in taking calls. It is easy to get "burned out" if you are covering a vast amount of shifts for ambulance duty every month. We have many who are devoted to our service and provide a lot of time and effort, but even they will tell you that it is nice to have some time off.

Our present EMT Class will conclude the first part of

June and then arrangements will be made for them to attend the Kansas State board exam. This involves written and practical testing to certify the EMT with the State of Kansas and Nationally.



## EMT Casualty Supply Trailer

The current times and events certainly dictate the importance of disaster preparation and training. The City of Lindsborg is burdened financially with providing the training and equipment needed to handle disasters. We have a local Hospital and highly trained Doctors and staff, who are limited in resources with the

number of patients that they can handle at a time.

A bus accident, plane crash or other types of incidents could lead to a condition where outside help is needed. The time it takes to get help is always an issue; which determines what we use to treat and care for victims until help arrives. In addressing these issues it was

obvious to EMS staff that a Casualty Supply Trailer was needed. The trailer would carry supplies and equipment necessary to do initial patient care used to "package" a patient for transport to a Hospital, and would be utilized whenever multiple patients were involved.

This year the City will be looking at purchasing a

casualty supply trailer and stocking it for such occasions and events. Tim Berggren, Chief of Police and Director of Public Safety stated, "This is something that we've talked about doing for some time. It is certainly good to see it finally come about, as it falls right into place with handling disaster situations."





# The Lindsborg City View

## CITY Wide Clean-Up

For many years the City of Lindsborg has sponsored a city-wide clean up to provide residents the opportunity to spruce up their properties without the added chore of hauling discarded items to McPherson. Large dumpsters are placed at the Lindsborg Parks Maintenance Facility (formerly known as the Tree Station) at 1111 E. Swensson. The gates are opened on a Saturday morning and one of the City Utility employees is on hand to assist with placing items into the larger containers.

The CITY Wide Clean-Up date is set for Saturday, June 14, 2008. Gates will open at 8:00 a.m. through 4:00 p.m. (or until the dumpsters are full).

**\*NO HAZARDOUS WASTE** (household chemicals, other chemicals etc.)

**\*NO APPLIANCES THAT COULD CONTAIN FREON** (refrigerators, freezers, air conditioners, etc.)

Please follow the rules provided by the McPherson Area Solid Waste Utility so that this service can continue to be provided for our residents.

**The following items CANNOT be placed in the dumpsters:**

**\*NO YARD WASTE** (grass clippings, dirt, leaves, limbs, weeds, straw, etc.)

**\*NO LIQUID** (paint, oil, etc.)

**\*NO TIRES**

**\*NO BATTERIES**

**\*NO AMMUNITION**



F.Y.I.

**The City**

**411**

## CODE Enforcement

Every City has ordinances that address items and issues that help to keep the community clean and free of decaying conditions. These types of ordinances address dilapidated buildings and homes, abandoned vehicles trash, debris, limbs, metal, and even mowing your lawn.

a property owner will receive a letter advising them of a violation with a request for it to be taken care of within a specified period of time. The violator then has the option of requesting a hearing. If the hearing does not resolve the problem and the timeline expires, the City moves on to correct it.

the violation continues. 2) The property can be abated which means that the City hires someone to take care of the problem and a bill is then sent to the person responsible. If the person does not take care of the bill, the City has it applied to their property taxes. 3) Both 1 and 2 together.

We are fortunate in Lindsborg because the majority of citizens take pride in the appearance of their homes and property. Visitors will comment on how neat and clean our City is compared to other areas. In opposite circumstances,

Ordinances usually have three options: 1) A violation is present and the person responsible is charged with appearing in Municipal Court for the violation, and can be charged for each day that

Take the time and effort to keep your home and property clean and well cared for. If you see a neighbor having difficulties, take the time to help. Let's show pride in our community!



**GARAGE SALE SIGNS**

Signs are **NOT** allowed in the Public Right of Way  
Signs are **NOT** to be attached to light or utility poles

Signs **MUST** be located on premises of sale  
Please **REMOVE** signs when sale is over

[www.lindsborgcity.org](http://www.lindsborgcity.org)





# RADIO Read Meters

In an ongoing effort to hold down expenses and curtail labor costs, the City of Lindsborg has undertaken a program of installing radio-read metering for both water and electric. As indicated by its' name, a radio-read meter transmits readings to a hand held receiver carried by the meter readers. In the case of water meters, this means the meter pit doesn't have to be found, the lid doesn't have to be lifted, and the meter lens doesn't have to be cleaned to get a reading. The

reader simply walks by the property and punches a button.

Before any radio read meters were installed, it would take two meter readers approximately 10 days each to read all of the electric and water meters. With about two-fifths of the way through installing nearly 3000 meters in the City, the reading time has been cut to between 6 and 8 days. When meters were read before, all results were hand written on sheets of paper.

They were then taken to City Hall where readings were manually typed into a computer to generate billings. Presently, with the hand held readers, they are simply plugged into the computer and downloaded (*less labor and less chance of error*). It also allows bills to be sent out on a more consistent time frame. With the savings in labor, the meter readers are able to devote more time to working with other public works departments.

# ENERGY Efficiency



Energy efficiency is important, but takes on greater importance during the summer months. The increased usage of air conditioners during the hot summer days places a severe demand on the electrical system of the City of Lindsborg.

Steps to help use electricity efficiently: turn the thermostat on the air conditioner up to 78 or 80 degrees and run clothes washers, clothes dryers and dishwashers during the early morning or evening hours. Additionally, unplugging electrical devices that are not

in use will help to reduce your demand for electric energy. These devices still draw an electric current even though they are not in use. These simple steps will help to use electricity wisely and reduce the pressure on the City's energy distribution system.



Mother's Day

May 11

Memorial Day

May 26

Father's Day

June 15





# The Lindsborg City View

## Lindsborg Municipal Swimming Pool



**2008 Regular Season: May 24 – August 10**

**Last Chance to Swim: August 16<sup>th</sup> + 17<sup>th</sup> 1:00 -6:00 p.m.**

Pool Hours: 1:00-8:00 p.m. every day except Monday, Wednesday, and Friday (see below)

*Lindsborg WaveMakers will be hosting 2 swim meets this year*

*Times and Dates will be announced after the league meeting*

### Adult Lap Swims:

7:00 – 8:00 p.m. Monday, Wednesday, Friday \$1.00 Admission (must be 18 or over)

### Midnight Swims:

June 14<sup>th</sup> -July 4<sup>th</sup> – August 2<sup>nd</sup> ♦ 10 p.m. till Midnight ♦ \$1.00

**Daily Admission:** \$2.50 (3 years & younger are free with paid admission)

**Season Pass:** Family \$120.00 ♦ Single \$55.00

**Daily Swim Pass:** 10-Swim Pass \$22.50 ♦ 20-Swim Pass \$40.00

### Private Parties:

\$100.00 for the first 40 people & \$1.00 per person thereafter

Time: 8:00 –10:00 p.m. Parties may be booked May 31<sup>st</sup> – Aug. 1

Call 227-3355 until May 24<sup>th</sup> , then call 227-2606

*Parties cannot be booked for the following year until February 1, 2009*

*A \$40.00 deposit must be received within two weeks of booking a party or the reservation will be cancelled and the evening made available to someone else. The deposit will be applied to the cost of the party or refunded if party is cancelled by pool staff due to weather or an unforeseen pool problem. Payment for remaining balance can be made at the pool at the time of the party. Deposit is non-refundable if person who scheduled party cancels the party with less than 48 hours notice.*

### Swim Lessons:

Cost: \$25.00 per person ♦ Sign up at the Swimming Pool during regular pool hours

Levels (I-VII) ♦ Age: 5 & Older ♦ Age 4: If parents/Lesson Coordinator agree the child is ready)

### Dates & Times:

June 9-20 ♦ Monday thru Friday 10:00-10:50 a.m. and 11:00-11:50 a.m.



**City Offices**

**CLOSED**

**Memorial Day**

**MAY 26**

**Park Shelter House Reservations**

**Monday-Friday 8 a.m. to 5 p.m. 227-3355**

**City Offices**

**CLOSED**

**Independence Day**

**JULY 4**

**P&R UPDATES**

**Receive Information**

**Updates On:**

**RECREATION  
PROGRAMMING**

**Send Your E-mail**

**Address To:**

**thadm@lindsborgcity.org**



**www.lindsborgcity.org**

# Lindsborg GOLF Course



The Lindsborg Golf Course season is in full swing. Friendly familiar faces continue to offer club house services including added programs and new merchandise. The well maintained 9 hole course is ready for individual, group, or tournament play. Single, Family and Student Memberships are available. Take advantage of a Ten Play or newly created Five Play card. The Lindsborg Golf Course staff looks forward to serving you!

For more information contact:

The Lindsborg Golf Course  
227-2244



**GREAT  
GIFT IDEAS!  
Memberships  
Ten or Five  
Play Cards  
Gift Certificates**



# Lindsborg RECYCLING Center Update

The new Recycling Center is close to becoming a reality. The entry to the new site will be in the vicinity of the 300 block of East McPherson. The paved surface area will expand to the North with an exit route directly onto Union Street.

A bid was approved at the April 2008 City Council meeting on paving the new surface area of the Recycling Center. Once the concrete drive is near completion, bids will be requested on a 6-foot privacy fence to shelter the west side of the center.



**OPEN 24/7**



# For Your Information

## DOG TAGS

Anyone owning a dog within the city limits must purchase a dog tag. Proof of rabies vaccination must be shown at the time of registration. Cost is \$5.00 for spayed or neutered dogs and \$25.00 for others. Dog Tags are available at City Hall or Veterinary Office.



## HERSHEY TRACK & FIELD MEET

Free program for boys and girls ages 9 to 14. Participants can enter either 2 track and 1 field event or 2 field and 1 track event. The meet will be held at Anderson field on Wednesday June 4, 5 p.m. Participants may register at City Hall.

Registration deadline → Friday, May 23



[www.lindsborgcity.org](http://www.lindsborgcity.org)

# THE CITY OF LINDSBORG

101 S. Main Street  
PO Box 70  
Lindsborg, Kansas 67456-0070

Pre-sort  
US Postage Paid  
Lindsborg, KS  
Permit No. 1

Residential Patron  
Lindsborg, KS 67456



## The Lindsborg City View

### Upcoming Events & Contact Information


#### City Contact Information

Phone: 785-227-3355  
Fax: 785-227-4128  
Web: [www.lindsborgcity.org](http://www.lindsborgcity.org)  
Email: [lindsborg@lindsborgcity.org](mailto:lindsborg@lindsborgcity.org)

#### Emergency Contact Information

Police, Fire and Ambulance: 911  
Police, Fire, Ambulance: 785-227-2988  
(non-emergency)  
Water, Sewer, Electric, Streets:  
785-227-3428  
Water, Sewer, Electric, Streets:  
785-227-3469 (after hours, weekends  
and holidays)

#### Calendar of Events 2008

- City Council Meetings (June 2, July 7, August 4)
- Happy Mother's Day (May 11) 
- Recycling (open 24/7) 
- Memorial Day (May 26) *City Offices Closed* 
- Flag Day (June 14) 
- Father's Day (June 15) 
- Midsummer's Day (June 21) 
- Independence Day (July 4) *City Offices Closed* 
- Broadway RFD (July 18, 19, 25, 26) 
- City View Newsletter-Vol. 7 (mid-August)

#### Mayor & City Council Contact Information

Judy Neuschafer ~ Mayor  
[jneuschafer@lindsborgcity.org](mailto:jneuschafer@lindsborgcity.org)

Ken Branch ~ Ward 1  
[kbranch@lindsborgcity.org](mailto:kbranch@lindsborgcity.org)

Wes Fisk ~ Ward 1  
[wfisk@lindsborgcity.org](mailto:wfisk@lindsborgcity.org)

Becky Anderson ~ Ward 2  
[banderson@lindsborgcity.org](mailto:banderson@lindsborgcity.org)

Betty Nelson ~ Ward 2  
[bnelson@lindsborgcity.org](mailto:bnelson@lindsborgcity.org)

Russ Hefner ~ Ward 3  
[rhefner@lindsborgcity.org](mailto:rhefner@lindsborgcity.org)

Rick Martin ~ Ward 3  
[rmartin@lindsborgcity.org](mailto:rmartin@lindsborgcity.org)

Brad Howe ~ Ward 4  
[bhowe@lindsborgcity.org](mailto:bhowe@lindsborgcity.org)

Lloyd Rohr ~ Ward 4  
[lrohr@lindsborgcity.org](mailto:lrohr@lindsborgcity.org)

[www.lindsborgcity.org](http://www.lindsborgcity.org)

