

RESOLUTION #2016- 11

CLERK / ELECTIONS

ESTABLISHMENT OF COMMISSIONER DISTRICTS FOR THE 2016
GENERAL ELECTION CYCLE

WHEREAS, Idaho Code §34-301 requires the Board of County Commissioners to, during a regularly scheduled meeting, establish the Commissioner Districts of the County in January of each general election year, and;

WHEREAS, individuals seeking the office of County Commissioner for District 1, 2 or 3 are required to live within the boundaries of these established Districts, and;

WHEREAS, the Board of County Commissioners has received a recommendation from the Bonner County Clerk which would establish the Districts to be nearly equal in population based on the most current registered voter data; and

WHEREAS, the resulting registered voters for Districts 1, 2 and 3 are:

| District | District | District |
|----------|----------|----------|
| 1 | 2 | 3 |
| 7,346 | 6,707 | 7,236 |
| 34.5% | 31.5% | 34.0% |

NOW THEREFORE BE IT RESOLVED that the three Commissioner Districts are established as stated on the following pages:


- “Exhibit A”, and
- “2016 Commissioner Districts For Bonner County” map,


and shall be in effect until changed by the Board of County Commissioners.

DATED THIS 12th day of January, 2016.


BOARD OF BONNER COUNTY COMMISSIONERS


Cary Kelly, Chairman


Todd Sudick, Commissioner


Glen Bailey, Commissioner

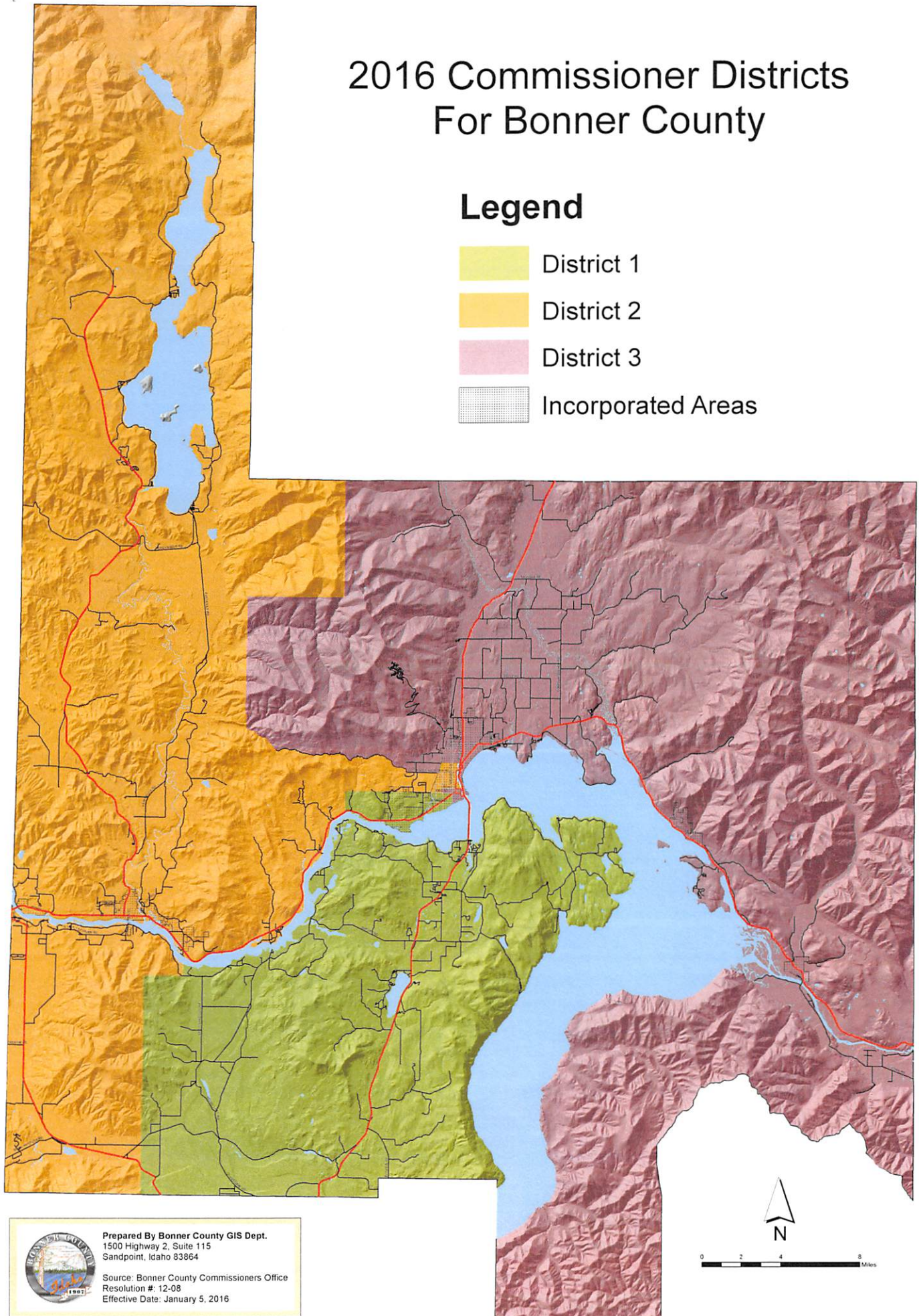
ATTEST: Michael W. Rosedale

By , Deputy Clerk

2016 Commissioner Districts For Bonner County

Legend

-  District 1
-  District 2
-  District 3
-  Incorporated Areas



Prepared By Bonner County GIS Dept.
1500 Highway 2, Suite 115
Sandpoint, Idaho 83864

Source: Bonner County Commissioners Office
Resolution #: 12-08
Effective Date: January 5, 2016

EXHIBIT A

Bonner County Registered Voters as of 1/5/2016

| | CD 1 | CD 2 | CD 3 |
|-----------------------|------|------|------|
| AIRPORT | | | 925 |
| ALGOMA | 742 | | |
| BALDY | | 975 | |
| BLUE LAKE | | 376 | |
| CAREYWOOD | 567 | | |
| CLARK FORK | | | 514 |
| COCOLALLA | 409 | | |
| COLBURN | | | 825 |
| DOVER | 409 | | |
| EAST PRIEST RIVER | | 743 | |
| EDGEMERE | 991 | | |
| GAMLIN LAKE | 487 | | |
| GROUSE CREEK | | | 580 |
| HOPE | | | 653 |
| HUMBIRD | | 888 | |
| KELSO | 151 | | |
| KOOTENAI | | | 1518 |
| LACLEDE | | 383 | |
| LAKEVIEW | | | 182 |
| LAMB CREEK | | 412 | |
| ODEN | | | 451 |
| OLDTOWN | | 1011 | |
| PRIEST LAKE | | 175 | |
| PRIEST RIVER W. CITY | | 239 | |
| SAGLE | 1012 | | |
| SANDPOINT | | | 871 |
| SELLE | | | 717 |
| SOUTHSIDE | 548 | | |
| SPIRIT VALLEY | | 847 | |
| WASHINGTON | 1303 | | |
| WESTMOND | 727 | | |
| WEST PRIEST RIV BENCH | | 374 | |
| WRENCO | | 284 | |

| | | | | |
|------------------|-------|-------|-------|---------------|
| Totals | 7,346 | 6,707 | 7,236 | 21,289 |
| % of Reg. Voters | 34.5% | 31.5% | 34.0% | |



Bonner County Clerk

Michael W. Rosedale

Clerk of the District Court
Ex-Officio Auditor & Recorder
Clerk of the Board of County Commissioners
Chief Elections Officer

Item #2

January 12, 2016

MEMORANDUM

To: Commissioners

Re: Establishment of Commissioner Districts for the 2016 Election Cycle

Description: Idaho statute 31-704 requires the BOCC to establish the Commissioner Districts during a regular meeting in January prior to any general election. This resolution does that. The Commissioner Districts are being kept "as is".

Legal Review: n/a

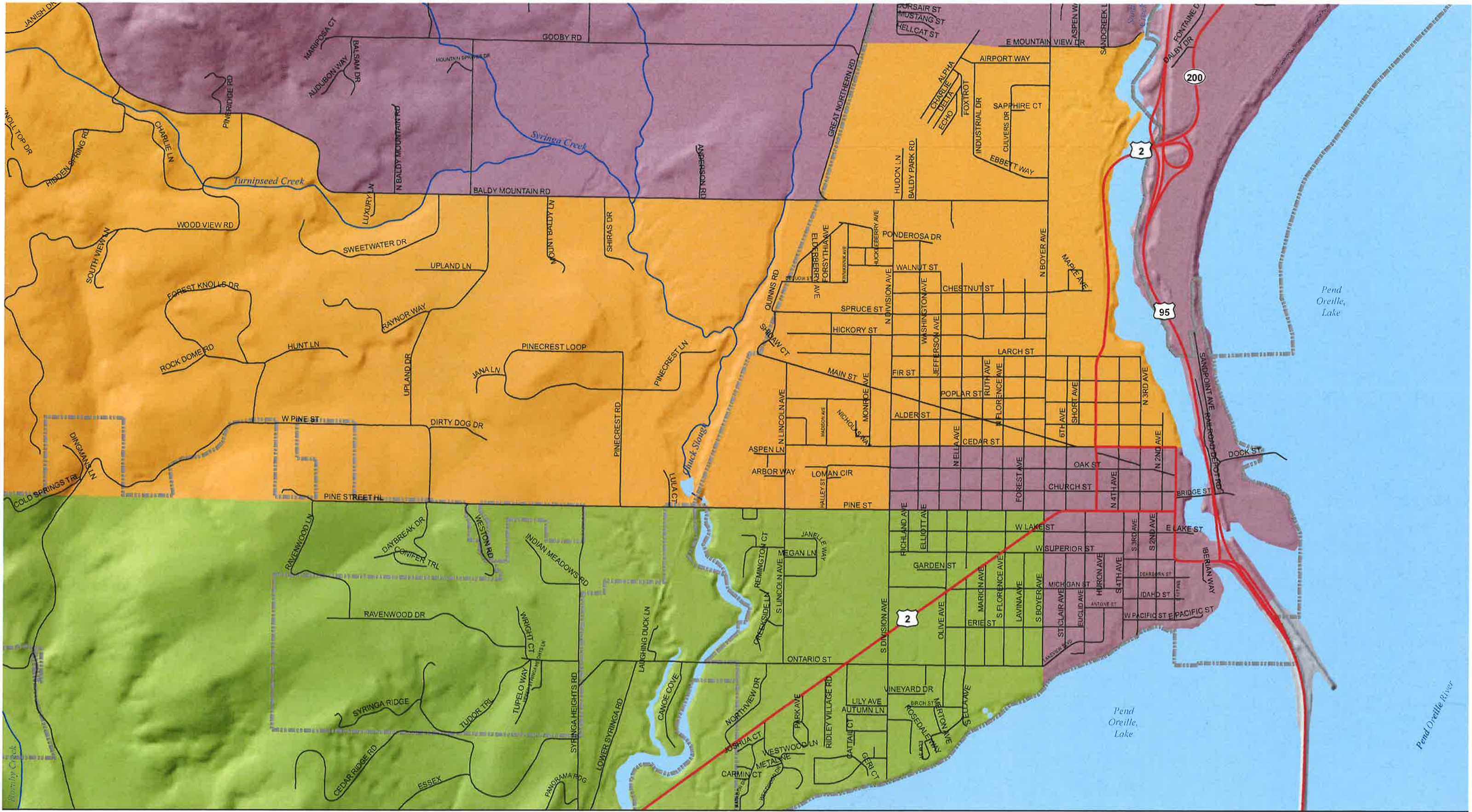
Distribution: ___ Original to
___ Copy to the BOCC Office

A suggested motion would be: **Mr. Chairman based on the information before us I move to approve Resolution 16- 11 establishing the Commissioner Districts as required in Idaho Code 31-704. No zoning changes were made.**

Recommendation Acceptance: ☒ yes ☐ no

Handwritten signature of Cary Kelly in blue ink.
Commissioner Cary Kelly, Chairman

Date: 01/12/2016



Prepared By Bonner County GIS Dept.
1500 Highway 2, Suite 115
Sandpoint, Idaho 83864

Source: Bonner County Commissioners Office
Resolution #: 12-08-16-
Effective Date: January 10, 2012-
Jan. 12, 2016

Legend

- District 1
- District 2
- District 3
- Incorporated Areas
- Roads
- Highways

2016 Commissioner Districts (Sandpoint Area)

